







**Chatsworth Avenue, Crich, Matlock, Derbyshire DE4 5DY**  
**£270,000 - Freehold**



## PROPERTY DESCRIPTION

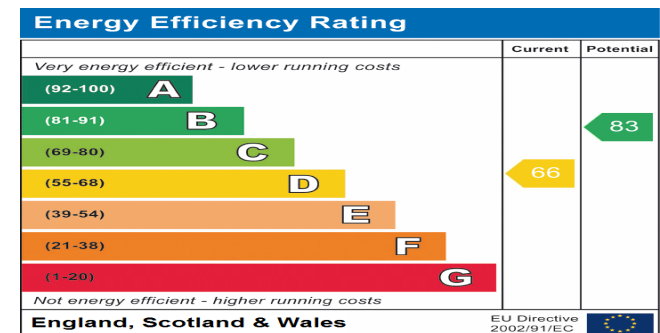
Stunning Three bedroomed mid-terrace with parking in the Sought-after village of Crich.

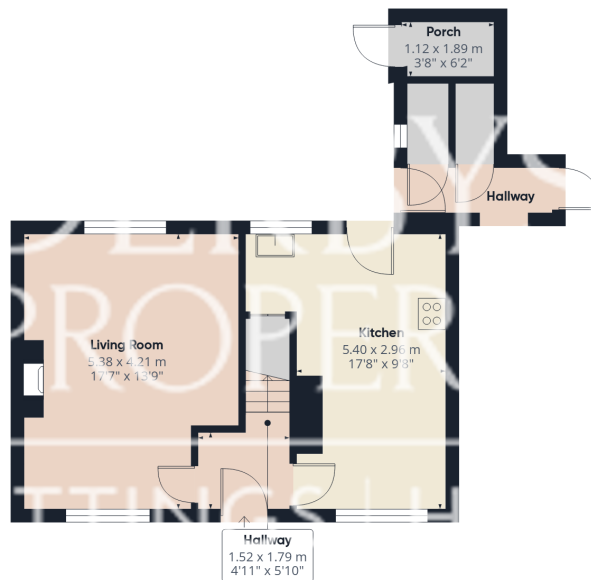
Offering well proportion rooms comprising of; entrance hall, lounge/dining room and kitchen/breakfast room all to the ground floor. And to the first floor there are three bedrooms and bathroom. The frontage to the property offers parking for 3-4 vehicles and a private rear garden that is ideal for families is located to the rear.

From Crich, you can easily explore the Peak District, cycle or walk along the High Peak Trail and Cromford Canal and take in the delights of The Chatsworth Estate. Good road communications lead to the bustling market towns of Matlock, Bakewell, Belper, Ashbourne, Alfreton and Chesterfield. The cities of Sheffield, Derby and Nottingham are all readily accessible via the A38 / M1 corridor.

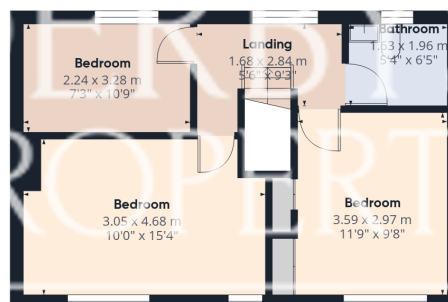
## POINTS OF INTEREST

- Sought After Location
- Three Bedrooms
- Viewing an Absolute Must
- Off Road Parking
- Private Rear Garden
- Village Location and Close To Local Amenities
- Council Tax Band A
- Newly Renovated





**Ground Floor**



**Floor 1**



**Approximate total area<sup>(1)</sup>**

87.4 m<sup>2</sup>

940 ft<sup>2</sup>

(1) Excluding balconies and terraces

Calculations reference the RICS IPMS 3C standard. Measurements are approximate and not to scale. This floor plan is intended for illustration only.

**GIRAFFE360**