

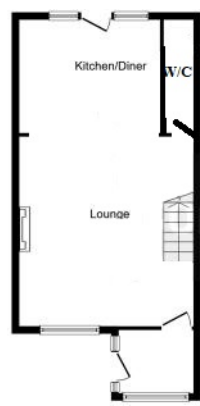
Lucksfield Way, Chelmsford

£335,000

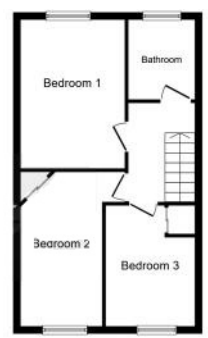
- TERRACED HOUSE
- GROUND FLOOR W/C
- OPEN PLAN KITCHEN/LOUNGE AREA
- MUST BE SEEN
- THREE DOUBLE BEDROOMS
- RE-MODERNISED THROUGHOUT
- GARDEN OFFICE

IDEAL INVESTOR PURCHASE OR FIRST TIME BUYERS Village location. Spacious accommodation benefitting from a modern fitted kitchen, modern bathroom suite, garden office and much more. Three bedroom mid-terraced house. EARLY VIEWINGS RECOMMENDED

This terrace home which is situated on a walkway position offers an entrance porch, ground floor WC, re-fitted kitchen/diner with views and door onto the rear garden, built in oven & hob plus a standalone washing machine and space for fridge freezer. To the first floor there are three double bedrooms plus a family bathroom with a luxury modern suite. Outside the property benefits from front & rear gardens which are laid to lawn and an external work from home office.



Ground Floor



First Floor