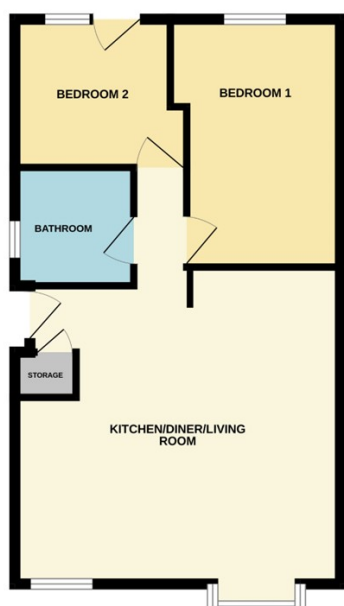




BOURNE

£165,000



*****BUNGALOW WITH NO ONWARD CHAIN***** Rosedale are delighted to offer this semi-detached bungalow ideally located just off North Road within easy access to Bourne town centre and bus stops. The property has been recently redecorated as well as slightly being reconfigured, to give a light and airy kitchen/living/dining area with a square bay window to the front, small inner hall, leading to the both bedrooms, and shower room. Outside the property is set back from the road with a driveway, carport, and access to the established rear garden. To fully appreciate this well presented bungalow viewings are highly recommended. EPC Energy Rating Currently Unavailable/Council Tax Band B.