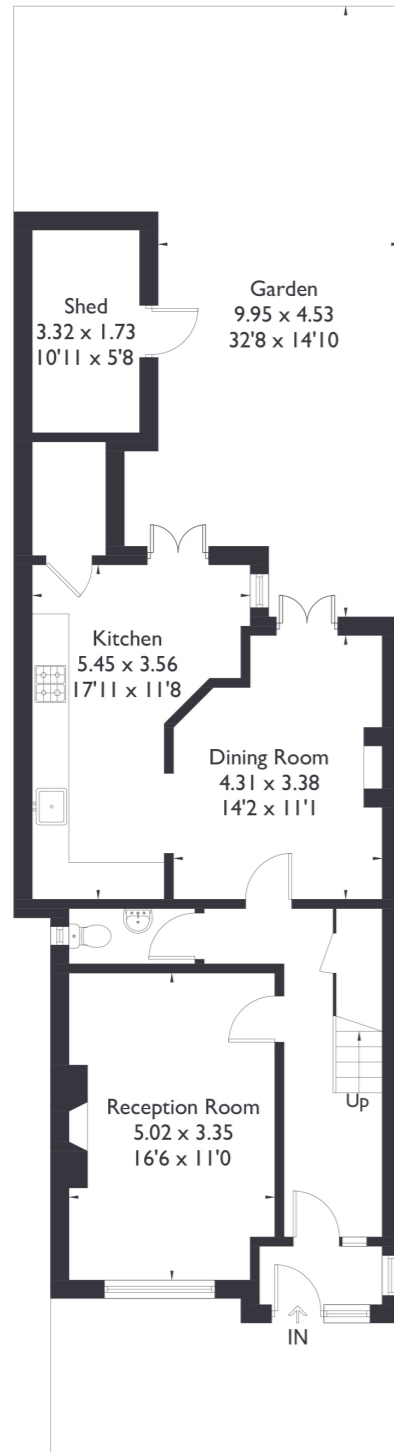


Lancaster Gardens, W13

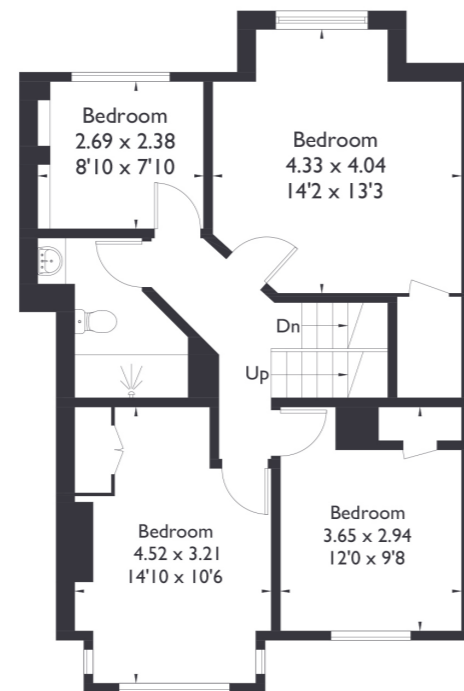
Approximate Floor Area = 161.7 sq m / 1740 sq ft
(Including Eaves / Excluding Shed)



Ground Floor



Second Floor



First Floor



5 BEDROOM HOUSE

Lancaster Gardens, W13
£1,300,000

Introducing this exquisite five bedroom house nestled in the sought after location of Northfields. From its stunning rooms to its wonderful garden, this property offers a truly exceptional living experience. Boasting two bathrooms and a convenient downstairs W/C, this home provides ample space and comfort for everyday living.

The dining area flow seamlessly into the kitchen, creating a harmonious space for both relaxation and culinary delights. Step outside from the kitchen to discover a charming garden, perfect for outdoor gatherings and tranquil moments.

FEATURES

- Five Bedrooms
- Two Bathrooms/Downstairs W/C
- Separate Kitchen/Living Space
- Utility Room
- West Ealing Station/Northfields Station
- Northfields Amenities
- EPC Rating D



5 BEDROOM HOUSE

Lancaster Gardens, W13

Upstairs on the first floor, you'll find four generously sized bedrooms and a well appointed bathroom ensuring privacy and convenience for all residents.

Ascend to the top floor, where you'll be greeted by a luminous en-suite room, bathed in natural light, offering a serene sanctuary to unwind and recharge. Conveniently situated on a quiet street, this property is just a stone's throw away from Northfields amenities and Northfields station providing easy access to local shops, cafes, and transport links. Additionally, West Ealing station with its Elizabeth Line services is a mere 15 minute walk away, enhancing connectivity to various parts of the city.

With its blend of elegant interiors, versatile living spaces, and prime location, this five bedroom house showcases modern comfort and sophistication in Northfields.

EPC Rating D.

