

PAUL ALEXANDER
MORTGAGE CONSULTANTS

For all insurance and mortgage needs,
please call Paul Alexander Mortgage Consultants
on 020 8997 3915

LONDON'S LOCAL AGENT
enquiries@orchardsoflondon.com
020 3962 6000 | orchardsoflondon.com
Westworld West Gate London W5 1DT

AMELIA CLOSE

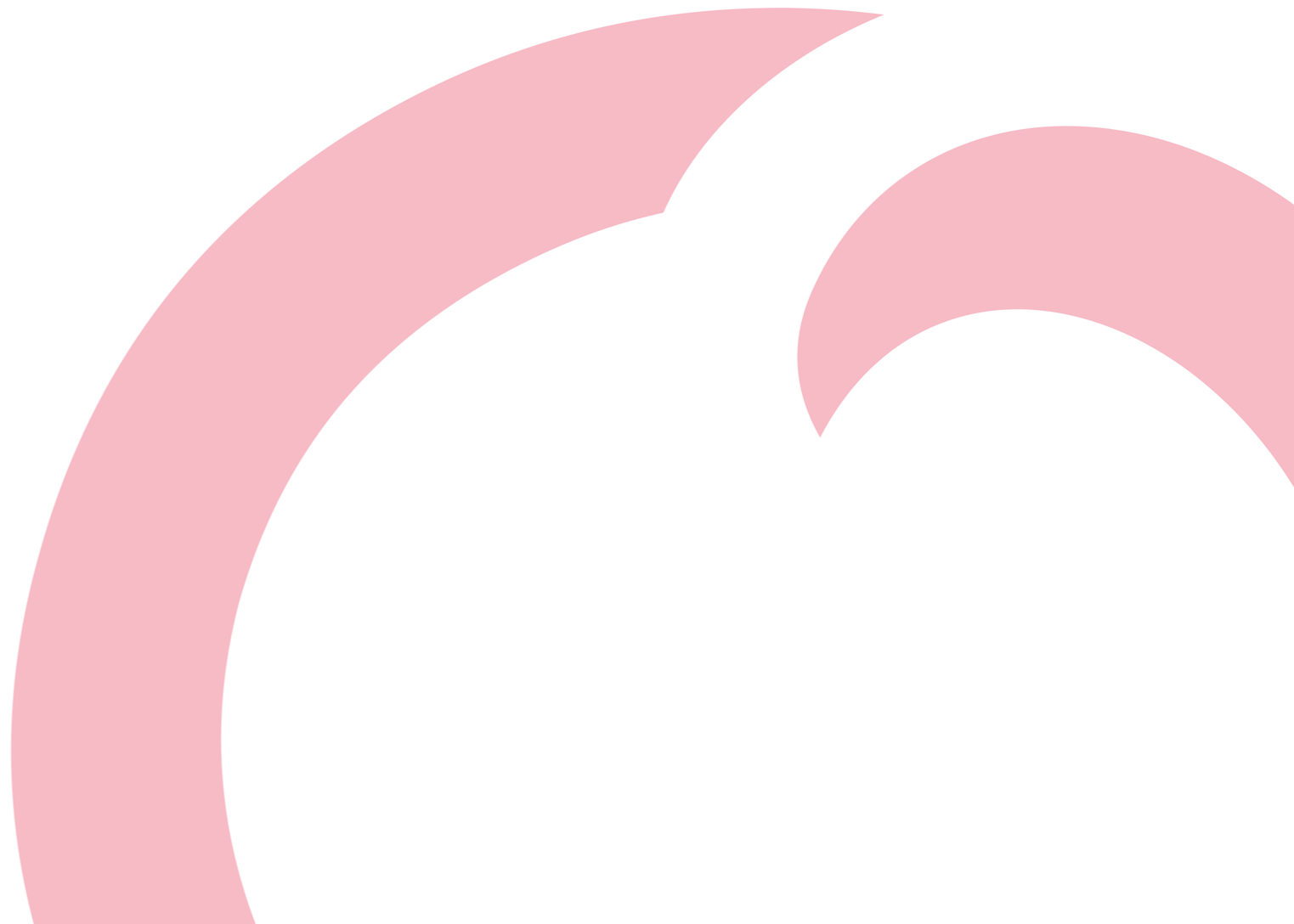
£435,000

- Two double bedrooms
- Off Road Parking
- Access to gardens
- Near Acton Town Tube Station
- Separate kitchen
- Own front door

LONDON'S LOCAL AGENT
enquiries@orchardsoflondon.com
020 3962 6000 | orchardsoflondon.com
Westworld West Gate London W5 1DT




Orchards of London Acton are delighted to present to the market for sale, a superb two bedroom ground floor flat, set back on a private road, just moments from Acton Town station (Piccadilly/District lines) and the busy shops, cafes and market along Acton High Street. The property itself comprises of a bright spacious reception room with ample room for entertaining and dining, adjoining this is a modern integrated kitchen. To the front of the property you will find a superb master bedroom with fitted storage, a second generous single bedroom also equipped with built-in wardrobes, and finally these rooms are accompanied by a smart family bathroom. Amelia Close W3 is the ideal location for commuters with residents parking and quick and easy links to the city and also frequent trains to Heathrow Airport.

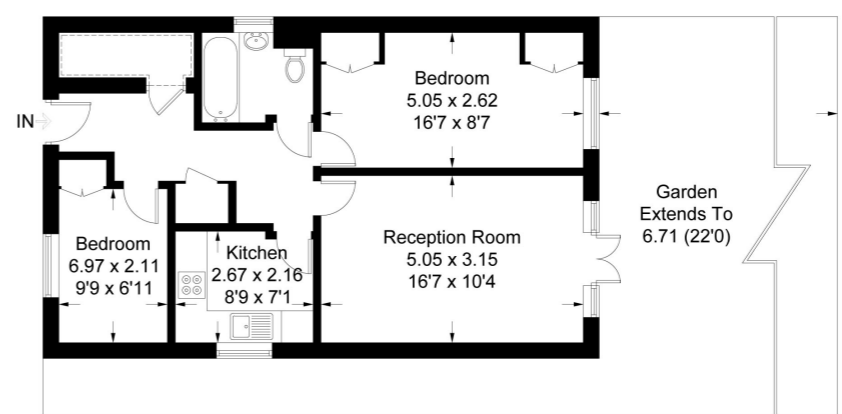


Amelia Close, W3

Approximate Gross Internal Area = 60 sq m / 646 sq ft
 (Including Reduced Headroom)
 Reduced Headroom = 2.3 sq m / 25 sq ft
 Total = 57.7 sq m / 621 sq ft
 (Excluding Reduced Headroom)



 = Reduced Headroom



Ground Floor

Measured in accordance with RICS Code of Measuring Practice. To be used for identification and guidance purposes only. Whilst every care is taken in the preparation of this plan, please check all dimensions, shapes and compass bearings before making any decisions reliant upon them. www.london58.com © 2021 hello@london58.com