

14a East Cliff

Folkestone
CT19 6BU

£210,000 LEASEHOLD

FOR SALE WITH BURNAP + ABEL..... Burnap + Abel are delighted to offer this three bedroom garden maisonette situated in a popular residential location on Folkestone's East Cliff. The property is in our opinion in good decorative order and offers a lounge, kitchen/diner, family bathroom and three bedrooms. Additional benefits include a 90 year lease, private rear garden, no onward chain and an ideal location for Folkestone Harbour and the Beach. For your chance to view call sole agent Burnap + Abel now on 01303 258590.



Lounge

14' 10" x 14' 4" (4.52m x 4.37m)

Kitchen/Diner

14' 10" x 14' 1" (4.52m x 4.29m)

Bathroom

9' 9" x 5' 8" (2.97m x 1.73m)

First Floor Landing

Bedroom One

14' 2" x 8' 11" (4.32m x 2.72m)

Bedroom Two

14' 4" x 8' 11" (4.37m x 2.72m)

Bedroom Three

11' 9" x 5' 5" (3.58m x 1.65m)

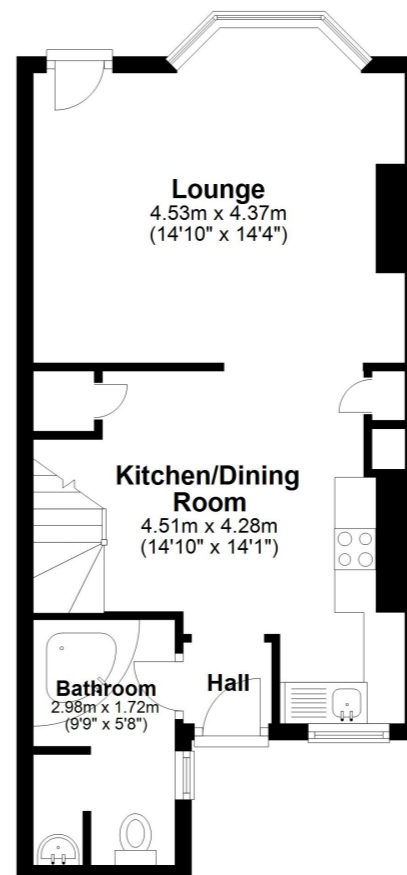
Rear Garden

Lease Start & End Date

The lease is 125 years from 1 January 1990 and ends 01 Jan 2115 leaving 90 years remaining.

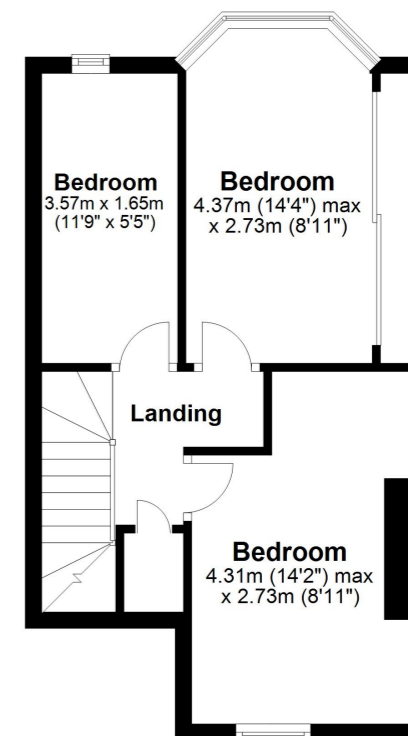
Lower Ground Floor

Approx. 39.0 sq. metres (419.6 sq. feet)



Upper Ground Floor

Approx. 33.5 sq. metres (360.1 sq. feet)



Whilst every attempt has been made to ensure the accuracy of the floor plan contained here, measurements of doors, windows, rooms and any other items are approximate and no responsibility is taken for any error, omission or mis-statement. This plan is for illustrative purposes only and should be used as such by any prospective purchaser.
Plan produced using PlanUp.

