

Jack Taggart & Co

RESIDENTIAL SALES

BRUNSWICK TERRACE, BN3 1HJ

£500,000

BRUNSWICK TERRACE, BN3 1HJ

Tucked away in the prestigious Brunswick Terrace in Hove, this stunning apartment offers an exceptional coastal lifestyle that effortlessly blends luxury and comfort. With two generously sized double bedrooms, this flat is perfect for those who want space without sacrificing style.

From the moment you step inside, the apartment's direct sea views take centre stage, offering a picturesque backdrop that enhances the entire living space. Housed within a Grade I listed building dating back to the early 1800s, designed by the renowned Wilds and Busby, the property combines historical grandeur with a sleek modern interior.

The open-plan living, dining, and kitchen area is a true highlight, with large sash windows framing the breathtaking sea views. The room is bathed in natural light, creating an inviting and airy atmosphere. A warm wood floor, rich heritage tones, and a period fireplace add character, while modern touches, such as matt black column radiators, introduce a stylish contrast. The Shaker-style kitchen is beautifully appointed, with marble countertops, integrated appliances, and a traditional butler sink, complemented by classic green subway tiles for a sophisticated finish.

The principal bedroom is equally impressive, offering the same stunning sea views. The room is decorated in soothing Hague blue, creating a serene and cohesive atmosphere. A freestanding roll-top bath sits beneath the sash window, offering the perfect spot to unwind with a soak while gazing at the waves.

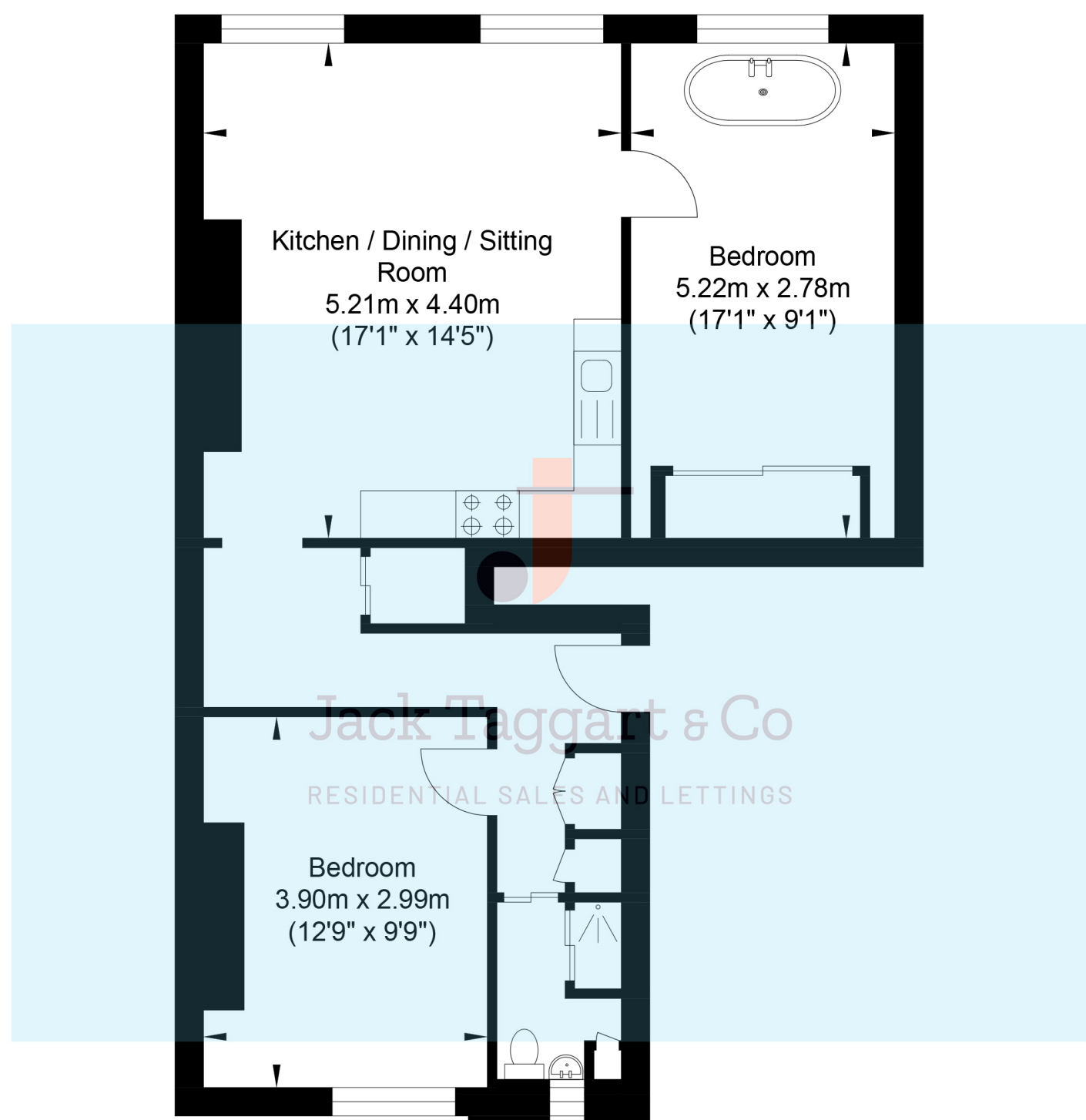
The second double bedroom, located at the rear, is light and calming with its soft rose blush tones. It features custom built-in storage, with full-height Shaker wardrobes that echo the kitchen cabinetry, providing ample space while maintaining the property's refined aesthetic.

The luxurious shower room is a standout, with a blend of green and white subway tiles creating a fresh and timeless feel. The suite includes a walk-in shower with exposed valves and a large rain showerhead, along with a stylish inset countertop basin, vintage wall-mounted taps, and a striking encaustic-patterned floor tile that ties everything together.

Positioned on the seafront in vibrant Brighton and Hove, this flat offers the perfect location with the beach just across the road and the bustling shops, cafes, and restaurants of Church Road and Western Road within easy reach. It's the ideal blend of coastal charm and city convenience.

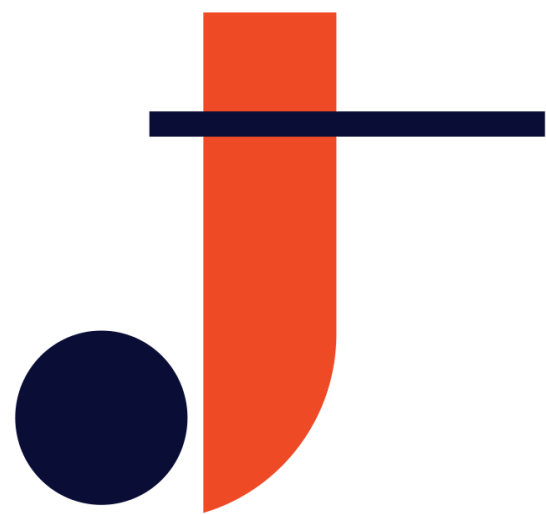
Don't miss your chance to call this beautiful flat your home. Embrace a life by the sea and experience the very best of seaside living at Brunswick Terrace.

Brunswick Terrace



Second Floor
Approximate Floor Area
663.70 sq ft
(61.66 sq m)

Approximate Gross Internal Area = 61.66 sq m / 663.70 sq ft
Illustration for identification purposes only, measurements are approximate, not to scale.



Jack Taggart & Co

RESIDENTIAL SALES