

93 Nightingale Road, Petts Wood, Orpington, Kent, BR5 1BH

**Property Images**











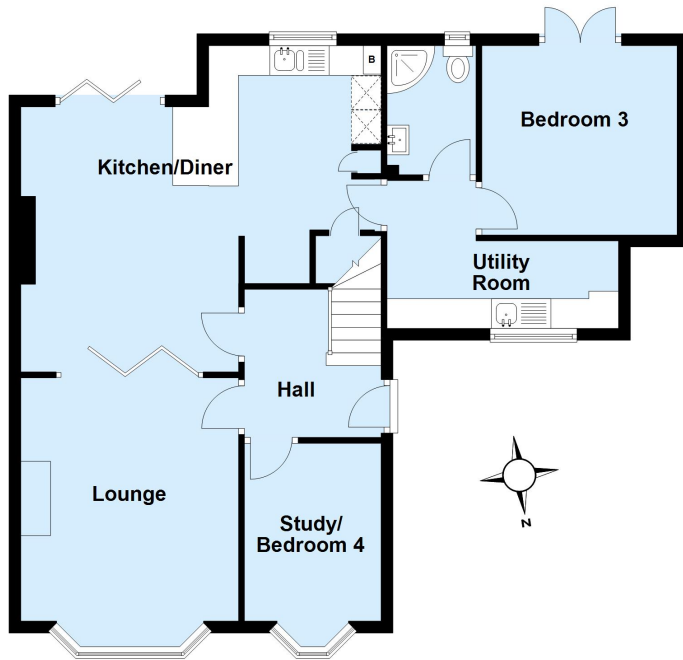






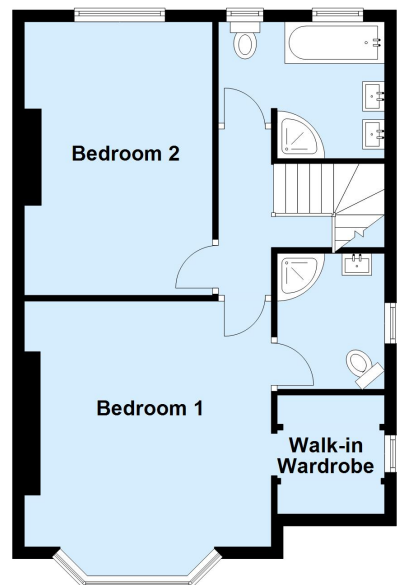
### Ground Floor

Approx. 78.2 sq. metres (841.6 sq. feet)



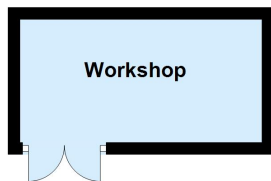
### First Floor

Approx. 53.0 sq. metres (570.6 sq. feet)



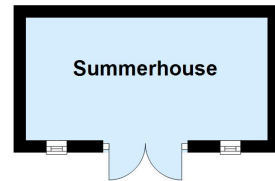
### Outbuilding

Approx. 8.5 sq. metres (91.0 sq. feet)



### Outbuilding

Approx. 8.5 sq. metres (91.0 sq. feet)



Total area: approx. 148.1 sq. metres (1594.2 sq. feet)

This plan is for general layout guidance and may not be to scale.  
Plan produced using PlanUp.