



Cambridge Drive, Potters Bar, Hertfordshire, EN6 3EX

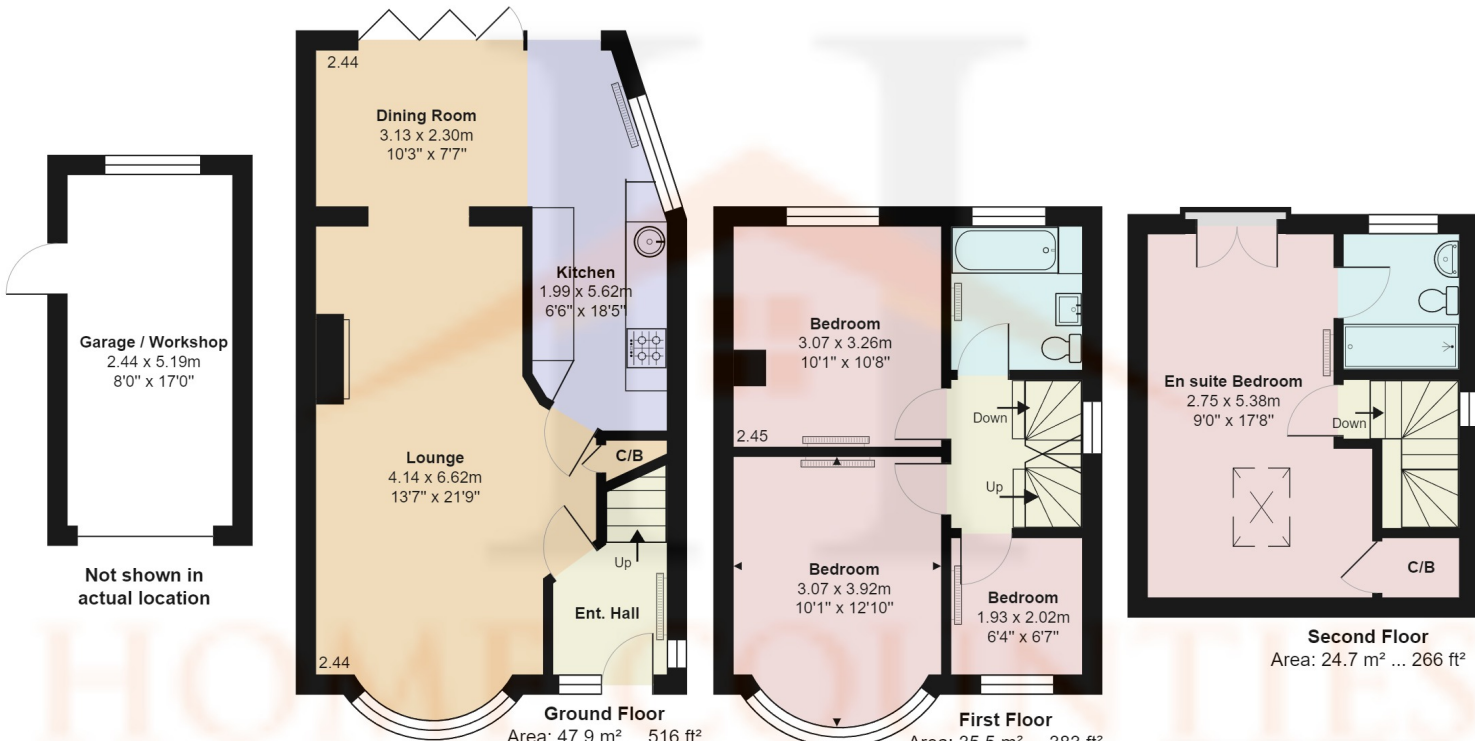
£675,000

- **FOUR BEDROOM SEMI DETACHED HOME**
- **CONVERTED GARAGE / WORKSHOP**
- **OPEN PLAN LOUNGE & DINING ROOM**
- **GOOD SCHOOL CATCHMENT AREA**
- **CLOSE TO A1 AND M25**
- **OFF STREET PARKING X 2**
- **LOFT CONVERSION WITH MASTER BEDROOM / EN-SUITE**
- **GROUND FLOOR EXTENSION**
- **WALKING DISTANCE TO POTTERS BAR MAINLINE STATION**
- **CLOSE TO SHOPS / RESTAURANTS /**

Cambridge Drive, Potters Bar, Hertfordshire, . EN6 3EX

£675,000 Freehold

Situated in the ever popular Auckland Area of Potters Bar is this delightful Four bedroom semi detached home. The home benefits from both a rear extension and loft conversion, featuring a master bedroom with en-suite on the top floor, two double bedrooms and a single bedroom with family bathroom on the first floor, whilst the first floor consists of an open plan lounge dining room, extension to the rear featuring additional dining space and extended kitchen. externally the home benefits from a South facing garden and the garage has been converted to a workshop. To the front there is off street parking for two cars.



Cambridge Drive, Hertfordshire EN6

Total Area: 108.2 m² ... 1165 ft² (excluding garage / workshop)
All measurements are approximate and for display purposes only

