



**Miller Homes, Plot 69, Hazelwood at Victoria Wynd, Calender Avenue, Kirkcaldy, Fife, KY1 2HG**

Spacious & Beautifully Presented, Four-Bedroom, Detached Home with Garage & Gardens

Up to date price and viewing info at [mov8realestate.com/property](https://mov8realestate.com/property)



# Property Description

Spacious and beautifully designed, ready-to-move-in, four-bedroom, detached home with an integral garage and gardens. Ideally located, in a modern and family-friendly development in Kirkcaldy, Fife.

Comprises an entrance hall, lounge, open-plan kitchen/dining room, four double bedrooms, an en-suite shower room, a family-size bathroom, a laundry room and a ground-floor WC.

The homes at Victoria Wynd are part of an exclusive development, designed for modern living, offering a flexible floor plan spread over two floors, creating a home that fits your current family life.

A stylish modern home, the Hazelwood features a selection of appliances and flooring throughout, as well as excellent storage provision and French patio doors leading to a private garden.

This energy-efficient home, also includes an integral garage, a driveway and well-kept communal grounds throughout the development.

A welcoming entrance hall affords access to the staircase leading to the upper hall and opens into an elegant and spacious lounge, filled with natural light with a front-facing window. A stunning open-plan kitchen and dining room is set to the rear, complemented by French patio doors leading to the garden, offering a versatile space for relaxing or social family time; whilst featuring a separate laundry room with side access to the garden, a convenient WC and an understair storage cupboard.

On the upper hall, set to the front, the principal bedroom offers an exceptionally spacious room with an en-suite shower room; whilst three further bedrooms are set to each aspect, offering flexible spaces and good-sized rooms, with the potential for a home office if desired. Completing the accommodation, the family-size bathroom is set to the side, offering space for a three-piece suite.

Materials within the advert have been supplied by Miller Homes.

PLEASE NOTE: Images are for illustration only, please consult the on-site development sales manager for plot-specific finishes.



Lounge	3.31m x 4.92m
Kitchen/Dining	5.39m x 3.18m
Laundry	2.06m x 1.95m
WC	2.06m x 1.08m

Principal Bedroom	4.38m x 2.89m
En-Suite	2.06m x 2.54m
Bedroom 2	3.73m x 2.6m
Bedroom 3	3.73m x 2.6m
Bedroom 4	3.05m x 2.64m
Bathroom	1.92m x 2.22m

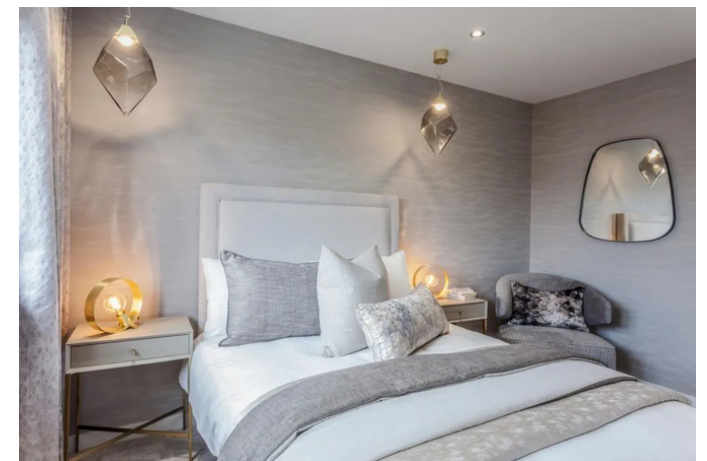
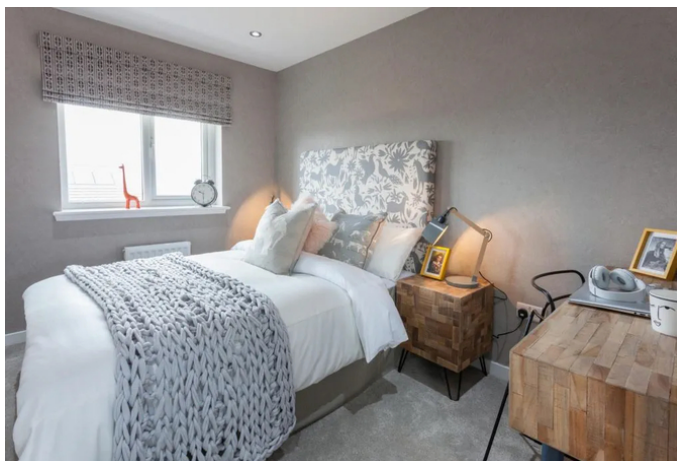
\*Please speak to your Development Sales Manager for kitchen layout details.

# Area Description

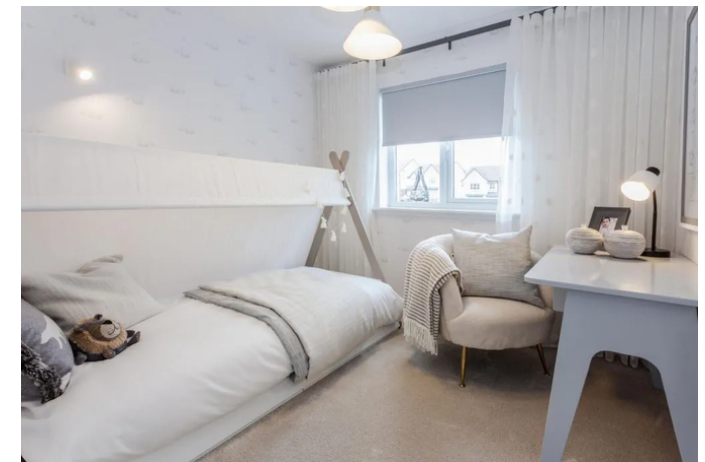
Located in Kirkcaldy, Victoria Wynd offers energy-efficient new build homes, designed with modern living in mind, with three and four-bedroom homes on offer, ideal for couples and families. Located on the north coast of the Firth of Forth and one of Fife's principal towns, Kirkcaldy offers plenty of outdoor spaces and recreation, such as Ravenscraig Park, beaches at Pathead Sands, and several golf courses and parks. This exciting new development is just over a mile away

from Fife Central Retail Park, providing a wide range of retailers, with further high-street names available in the town centre, as well as a large artisan market enjoying locally produced products. Ideally situated for commuters, with the A92 allowing quick access to the motorway network and Edinburgh Airport, while the railway station brings Edinburgh, Dundee and the towns of Fife, within easy commuting distance.









## Our Services

- Free pre-sale property valuations
- Great value fixed estate agency fees
- Extensive buyer matching database
- Purchase and sale conveyancing

## Contact Us

0345 646 0208

sales@mov8realestate.com

www.mov8.com

### Head Office

6 Redheughs Rigg, Edinburgh, EH12 9DQ

### Glasgow Office

77 Renfrew Street, Glasgow, G2 3BZ



Estate Agents and Solicitors

