

26 Hirst Close

Dover
CT16 2EJ

£210,000 FREEHOLD

Draft Details...FOR SALE THROUGH BURNAP + ABEL...Price Range £210,000 - £220,000 | Located in the ever-popular Hirst Close, Dover! This fabulous three-bedroom terraced house is Ideal for those who want to put their own stamp on a property, and combines generous living space with fantastic potential. The accommodation features a spacious lounge diner, a kitchen, three well-proportioned bedrooms, and a bathroom with separate toilet. Outside, the home boasts a private garden with rear access, perfect for families and outdoor entertaining. Additional benefits include double glazing and gas central heating, ensuring comfort and practicality. Perfectly located within close proximity to local schools and shops, this home is ideal for first-time buyers or those with a growing family seeking space, convenience, and the chance to add value. Contact Burnap + Abel today on 01304 279107 to arrange your viewing.



Lounge/Dining Room

24' 11" x 10' 11" (7.59m x 3.33m)

Kitchen

8' 11" x 7' 11" (2.72m x 2.41m)

Bedroom One

13' 1" x 10' 0" (3.99m x 3.05m)

Bedroom Two

11' 7" x 9' 0" (3.53m x 2.74m)

Bedroom Three

10' 1" x 7' 0" (3.07m x 2.13m)

Bathroom

Separate W.C.

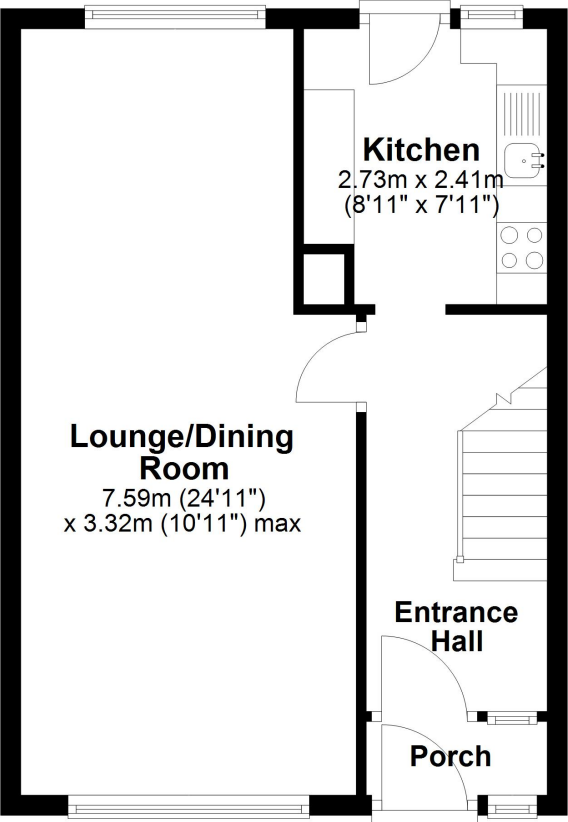
Garden

Area Information

Set in a popular residential area just a short drive away from Dover town and Dover Priory main line railway station with its fast links to London in just over 1 hour 5 minutes. There are a selection of both primary and secondary schools, including the Boys & Girls Grammar Schools near by. At the top of the hill is Tesco, White Cliff Vets and the recently opened Pets At Home, B&M superstore and B&Q. There are good access routes to the A2/M2 for Canterbury and London.

Ground Floor

Approx. 39.5 sq. metres (425.6 sq. feet)



First Floor

Approx. 40.5 sq. metres (436.3 sq. feet)

