

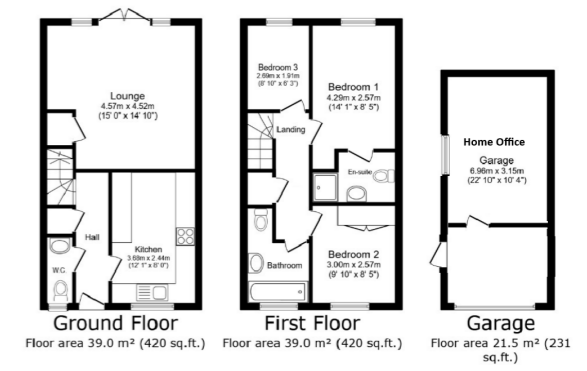
FOR SALE



4 Ashfield Drive, Letchworth Garden City, Hertfordshire. SG6 1GP

£465,000

- Type: Semi-Detached House
- Reception Rooms: 1
- Tenure: Leasehold
- Council Tax: Band D
- Bedrooms: 3
- Service Charge: £0.00
- EPC Rating:
- Bathrooms: 2
- Ground Rent: £0.00



01462 481100 | simon.ellmers@country-properties.co.uk