



Forest Heights | Halton







4 

3 

2 

 **lunevalley**  
ESTATES.



EPC - B



Band E



Freehold







Halton is a highly sought-after family destination, with amenities such as a doctor's surgery and reputable primary school, while nearby, the purpose-built community centre hosts various sports, a skate park, and a playground. With riverside walks, easy M6 access, and a cycle path connecting to Lancaster City Centre and beyond, Halton seamlessly blends tranquillity and accessibility, with picturesque surroundings.



As we explore this stunning 4-bedroom detached residence at 4 Forest Heights, a creation by Wrenman Homes and formerly the show house, its unique split-level design immediately captures attention, maximizing space with tall ceilings and large rear-facing picture windows which frame sweeping views.





Upon entering, the welcoming Entrance Hall leads to the Integral Garage access, a WC, and a spacious Lounge prime for relaxation. Descending to the lower ground floor unveils the generously proportioned Siematic Kitchen Diner, featuring top of the range Neff appliances and elegant quartz countertops. Bi-fold doors open to reveal a beautiful garden, complete with a raised patio, offering panoramic views and a family-friendly lawn space. A utility room adjoins the Kitchen Diner for added convenience.

Ascending from the hallway, the second tier unveils a luxurious 4-piece family bathroom fitted by SR Brown and a spacious double bedroom graced by sweeping village vistas, while further upward, a set of stairs lead to three further bedrooms, including the Master Suite with beautiful built-in wardrobes and an ample en-suite shower room.

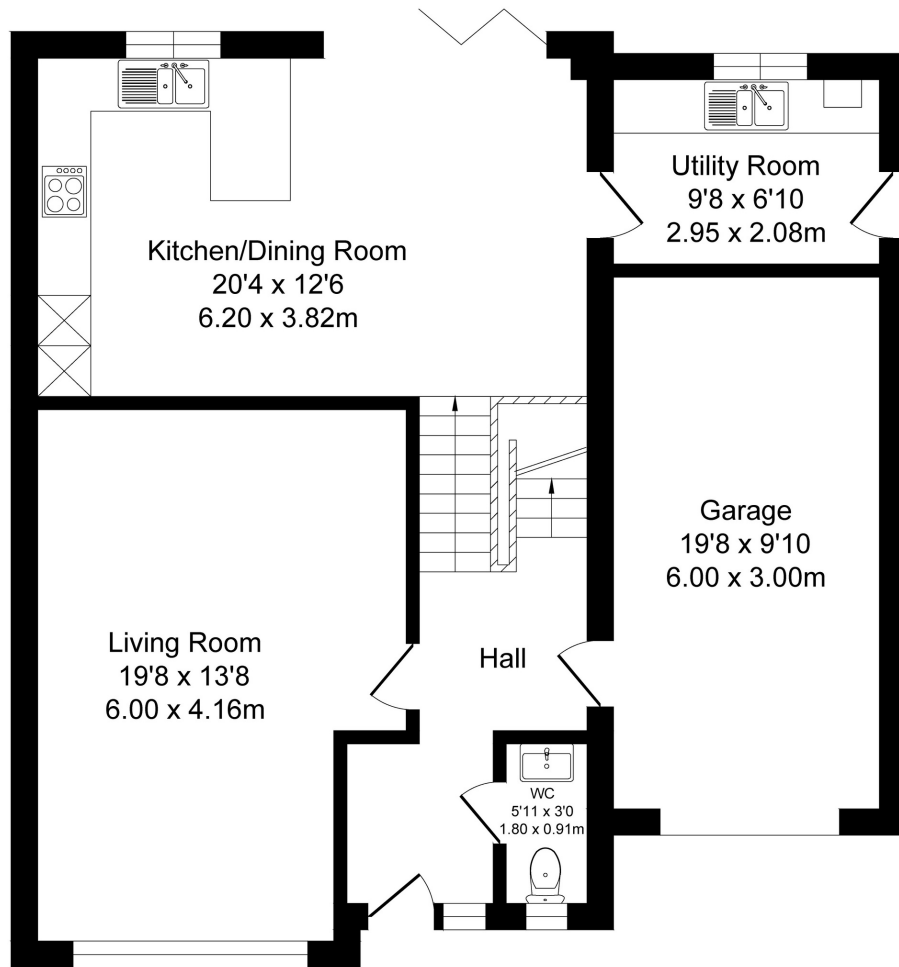
Double off-street parking alongside a spacious garage with an electric door complete this exquisite home. Features to note include B4RN internet availability, NEST Thermostat control throughout, Hardwired Ring Doorbell & front to rear floodlight cameras.





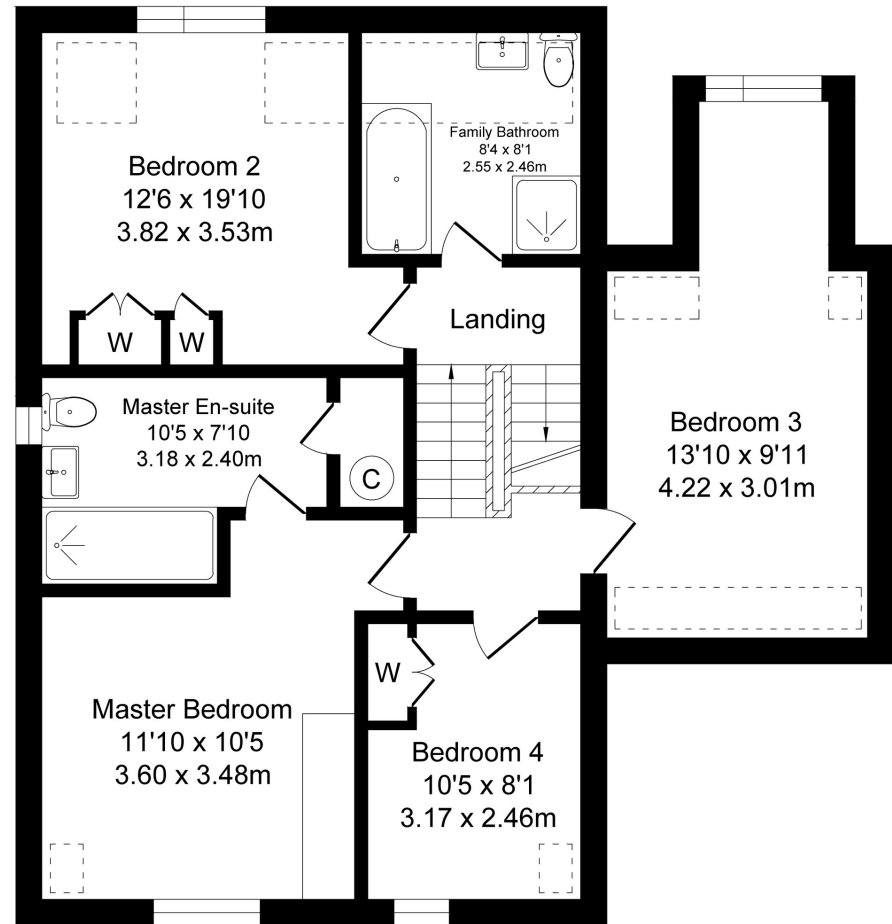






Ground Floor

Approx. Floor Area 944 Sq.Ft (87.7 Sq.M.)



First Floor

Approx. Floor Area 846 Sq.Ft (78.6 Sq.M.)

Total Approx. Floor Area 1790 Sq.ft. (166.3 Sq.M.)

Surveyed and drawn by Lens Media for illustrative purposes only. Not to scale. Whilst every attempt was made to ensure the accuracy of the floor plan, all measurements are approximate and no responsibility is taken for any error.



# The Essentials



The Greyhound  
*0.7 miles*



Premier  
*0.5 miles*



Black's Fish &  
Chips  
*0.5 miles*



Ash Tree  
Pharmacy  
*0.5 miles*







# lunevalley

## ESTATES.



*Scan to visit our website!*

Suite 8, Willow Mill, Caton, LA2 9RA  
01524 256625  
team@lunevalleyestates.com  
lunevalleyestates.com