

Accacia Canterbury Road

SWINGFIELD, Dover
CT15 7HR

£425,000 FREEHOLD

FOR SALE WITH BURNAP + ABEL... Welcome to your charming home on Canterbury Road in the peaceful village of Swingfield. This lovely 3 bedroom detached bungalow boasts a cozy lounge with open fire, perfect for relaxing or entertaining guests. The kitchen/diner is ideal for preparing delicious meals and enjoying family dinners together. With a bathroom, separate W.C., and three double bedrooms, this home has everything you need for comfortable living. Outside, you'll find an impressive in & out driveway with a garage, providing ample parking space for all your vehicles. Step into the backyard and discover a serene oasis that backs onto picturesque fields, offering tranquillity and privacy like no other. Don't miss out on the opportunity to make this dreamy property yours - schedule a viewing today and envision yourself calling Canterbury Road home!



Entrance Hall

Lounge

11' 6" x 10' 7" (3.51m x 3.23m)

Kitchen/Diner

20' 10" x 8' 0" (6.35m x 2.44m)

Shower Room

7' 5" x 6' 2" (2.26m x 1.88m)

Conservatory

23' 4" x 10' 7" (7.11m x 3.23m)

W.C

Bedroom One

12' 2" x 11' 7" (3.71m x 3.53m)

Bedroom Two

12' 2" x 11' 6" (3.71m x 3.51m)

Bedroom Three

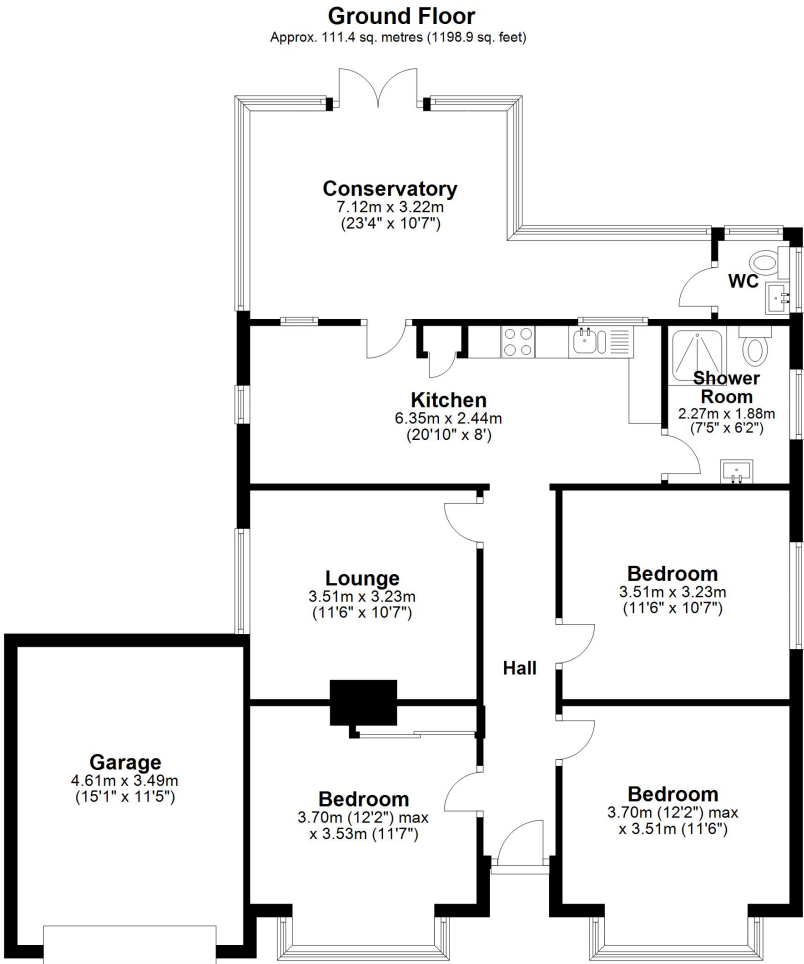
11' 6" x 10' 7" (3.51m x 3.23m)

Garage

15' 1" x 11' 5" (4.60m x 3.48m)

In & Out Driveway

Rear Garden



Total area: approx. 111.4 sq. metres (1198.9 sq. feet)

Whilst every attempt has been made to ensure the accuracy of the floor plan contained here, measurements of doors, windows, rooms and any other items are approximate and no responsibility is taken for any error, omission or mis-statement. This plan is for illustrative purposes only and should be used as such by any prospective purchaser. Plan produced using PlanUp.

