



Lyttleton House, 64 Broomfield Road, Chelmsford, Essex, CM1 1SW

Council Tax Band C (Chelmsford City Council)



£1,100 pcm

AVAILABLE FROM 30TH NOVEMBER 2023 - Bond Residential are delighted to offer for let, this well presented 1 bedroom first floor flat which is ideally located within walking distance to Chelmsford City Centre and main line station.

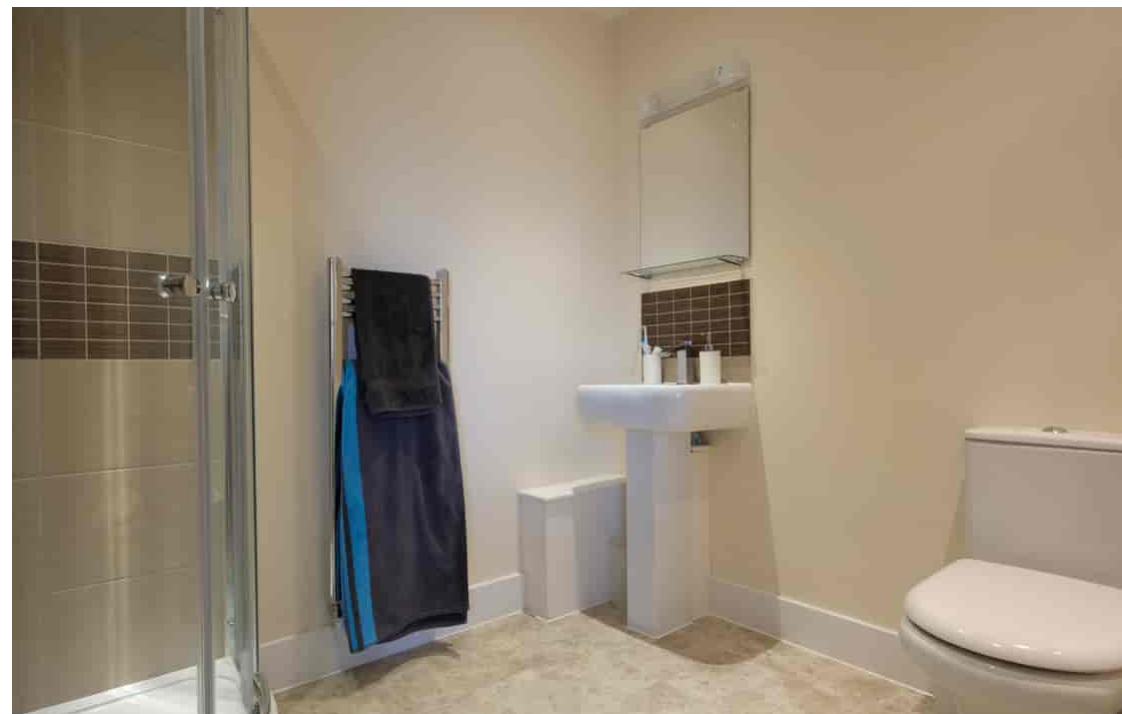
The property features a spacious open plan living area and kitchen, complete with integrated appliances, large main double bedroom with en-suite shower room and built in wardrobe.

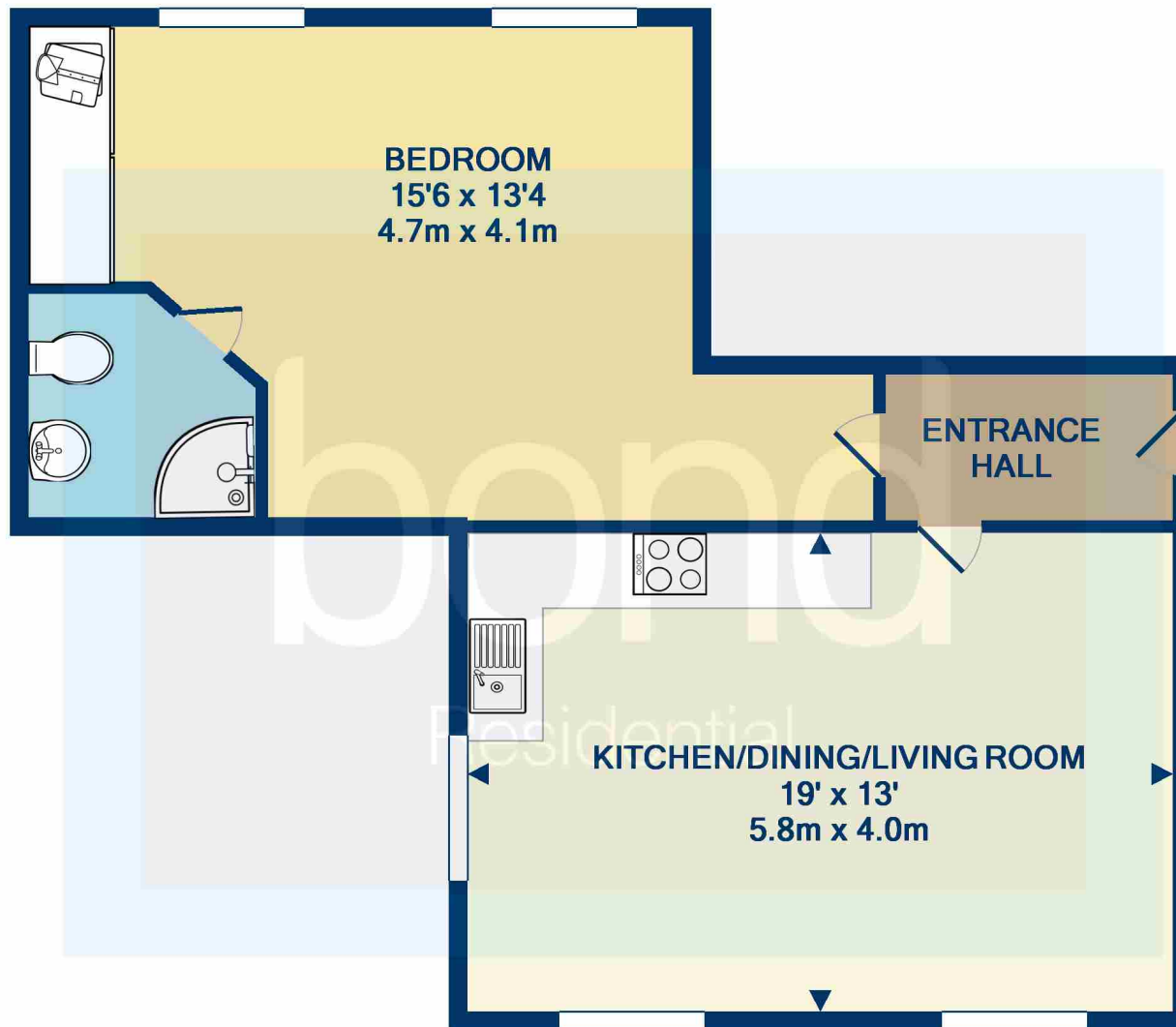
Modern theme throughout and neutral decor. Allocated parking, gas central heating. Unfurnished property. Would ideally suit a professional couple or single person.

Unfortunately, pets are not permitted. Deposit £1260. Council Tax Band C.

- First Floor Flat
- Allocated Parking
- Unfurnished
- Deposit £1260

- Gas Central Heating
- Walking distance to Main Line Station & City Centre
- Available NOW
- Recently Redecorated





Measurements are approximate. Not to scale. Illustrative purposes only
Made with Metropix ©2017

78, New London Road,
Chelmsford, Essex, CM2 0PD
Telephone: 01245 500599
Website: www.bondresidential.co.uk

Consumer Protection from Unfair Trading Regulations 2008 and the Business Protection from Misleading Marketing Regulations 2008. Bond Residential have made every effort to ensure that consumers and/or businesses are treated fairly and provided with accurate material information as required by law. We have not tested any apparatus, equipment, fixture, fitting or any services and as such are unable to verify they are in working order, fit for their purpose, or within the ownership of the seller or landlord. Neither have we been able to check the legal documentation to verify the legal status of the property. We therefore advise potential buyers or tenants to verify these matters with their own solicitors or other advisers.

