



63 Hythe Road Surrey, STAINES-UPON-THAMES. TW18 3EE.
2 Bedroom Semi-Detached House - £410,000 Freehold

63 Hythe Road Surrey, STAINES-UPON-THAMES. TW18 3EE.

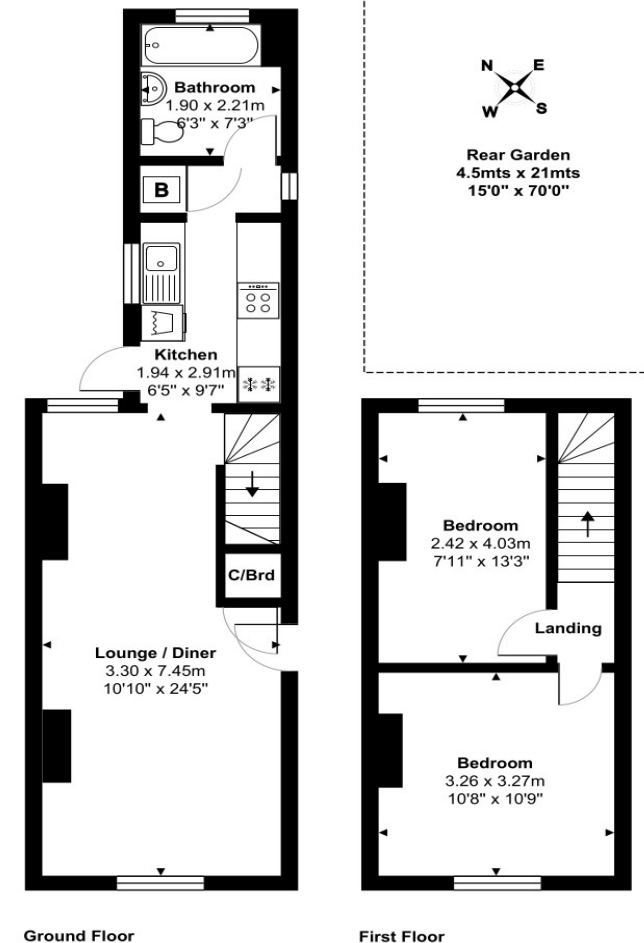
01784 451458

2 Bedroom Semi-Detached House - £410,000 Freehold

WELL PRESENTED AND SPACIOUS TWO BEDROOM CHARACTER COTTAGE SITUATED ALONG THIS SOUGHT AFTER ROAD IDEALLY LOCATED FOR STAINES TOWN CENTRE, LOCAL MOTORWAY NETWORKS & THE RIVER THAMES. The property benefits from a spacious lounge/diner, separate modern fitted kitchen, two double bedrooms, modern white bathroom suite and large secluded rear garden. No Onward Chain. Viewings Highly Recommended!

Key Features

- CHARACTER PROPERTY
- MODERN KITCHEN & BATHROOMS
- CLOSE TO EGHAM & STAINES TOWN CENTRES
- NO ONWARD CHAIN
- SPACIOUS ROOMS
- TWO DOUBLE BEDROOMS
- LARGE REAR GARDEN
- EASY ACCESS TO LOCAL MOTORWAY NETWORKS



Ground Floor

First Floor

Total Area: 61.1 m² ... 658 ft²

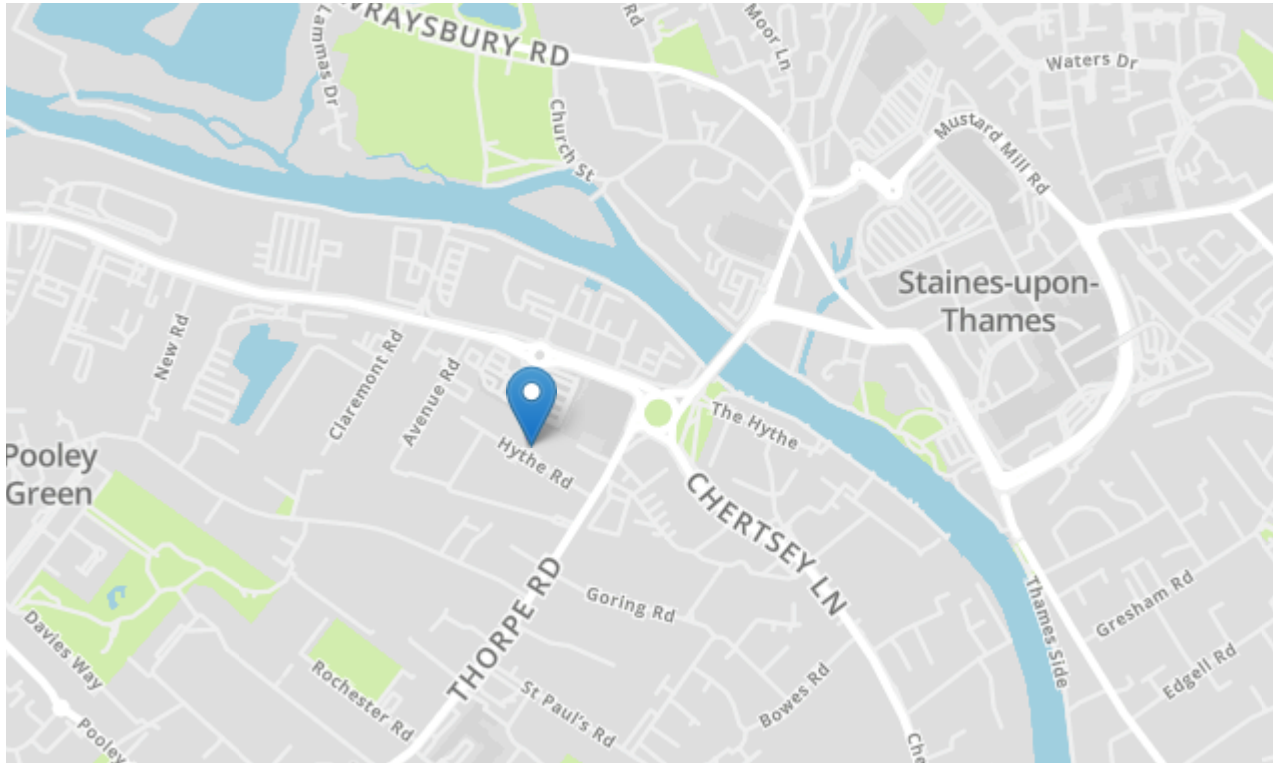
All measurements are approximate and for display purposes only.





63 Hythe Road Surrey, STAINES-UPON-THAMES. TW18 3EE.

gregory-brown.co.uk



Tenure **Freehold**
Lease Term
Ground Rent
Service Charge
Local Authority
Council Tax

We have prepared these property particulars as a general guide to a broad description of the property. They are not intended to constitute part of an offer or contract. We have not carried out a structural survey and the services, appliances and specific fittings have not been tested. All photographs, measurements, floorplans and distances referred to are given as a guide only and should not be relied upon for the purchase of carpets or any other fixtures or fittings. Lease details, service charges and ground rents (where applicable) and council tax are given as a guide only and should be checked and confirmed by your solicitor prior to exchange of contracts. The copyright of all details, photographs and floorplans remain exclusive to Gregory Brown.

