



50 King Orry Road, Glen Vine, Isle of Man . IM4 4FJ

Spacious detached family home on a highly regarded road with private South facing garden



£665,000 Freehold

PROPERTY DESCRIPTION

On entering the property you are greeted by a spacious entrance hallway with understairs cloakroom for convenience.

There are two large reception rooms either side of the hallway, ideal for families and those who require multiple reception areas, the lounge is complimented by a multi fuel burner and opens into the Kitchen/Diner. The Kitchen itself stretches to 25ft and opens into the rear garden and patio, there is space for a 6-8 seater dining table, perfect for entertaining. Alongside the kitchen is a spacious utility room with access to the integral garage.

Upstairs are four spacious bedrooms, the master is complimented by a modern en suite bathroom, there is also a family bathroom and built in airing cupboard. The bedrooms offer plenty of space for a family and the en suite bathroom provides a nice privacy aspect for homeowner.

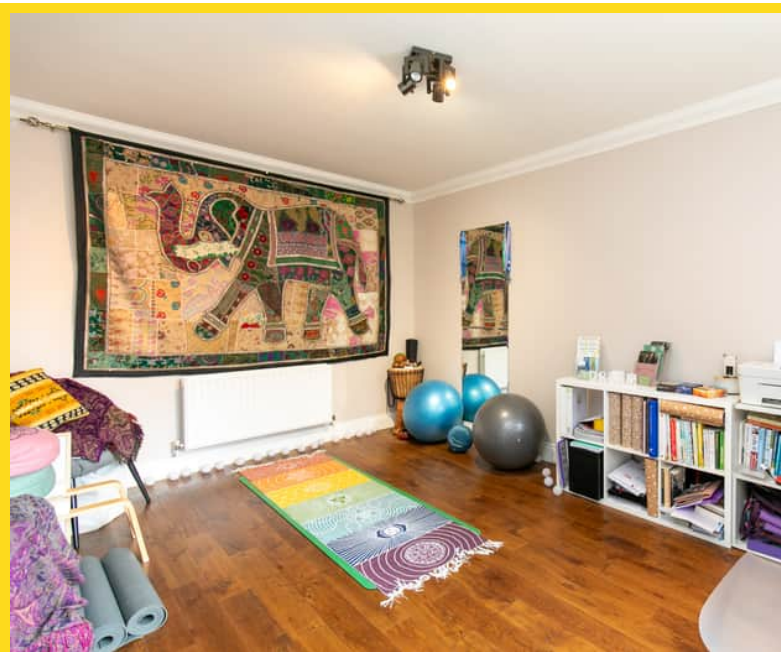
To the front of the property is a large driveway providing off road parking for two vehicles. To the rear is a generous and private South facing garden with patio, a great space for entertaining and soaking up the sun on a nice day.

FEATURES

- Modern Detached Family Home
- Desirable Location
- Close to Marown Primary School
- Lounge plus Family Room and Dining Kitchen
- W.C. & Utility Room
- 4 Bedrooms (1 En Suite) plus Bathroom
- Private South Facing Garden
- Integral Garage & Off Road Parking

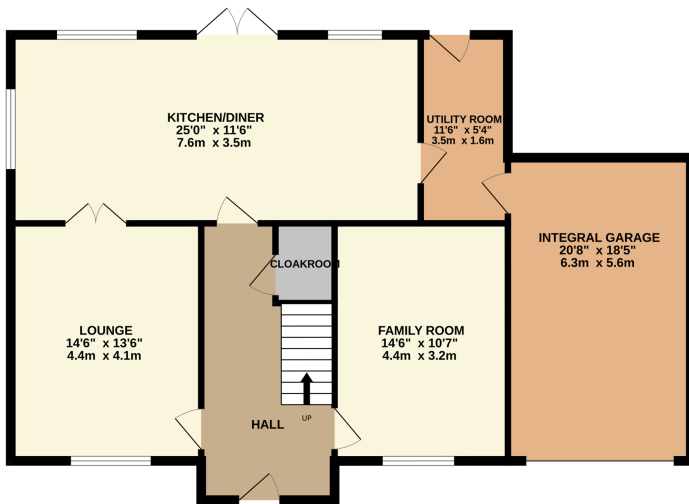


Property Images

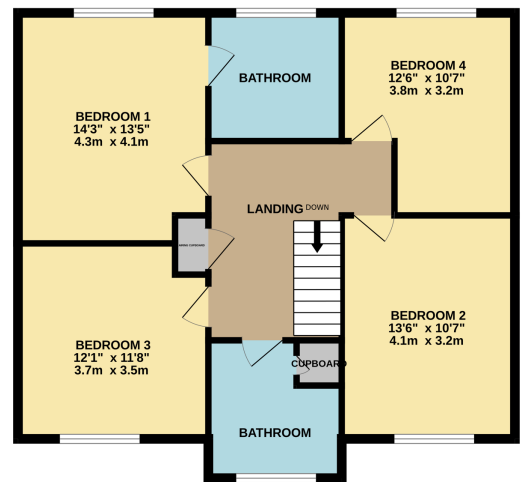


FLOORPLAN

GROUND FLOOR
1012 sq.ft. (94.0 sq.m.) approx.



1ST FLOOR
806 sq.ft. (74.9 sq.m.) approx.



TOTAL FLOOR AREA: 1818 sq.ft. (168.9 sq.m.) approx.

Whilst every attempt has been made to ensure the accuracy of the floorplan contained here, measurements of doors, windows, rooms and any other items are approximate and no responsibility is taken for any error, omission or mis-statement. This plan is for illustrative purposes only and should be used as such by any prospective purchaser. The services, systems and appliances shown have not been tested and no guarantee as to their operability or efficiency can be given.
Made with Metropix ©2025

DISCLAIMER: Whilst Manxmove Ltd believe that these details are correct, neither Manxmove Ltd or their clients guarantee their accuracy in any way. Consequently, these details are not to be used to form part of any legally binding contract. Prospective purchasers or tenants are advised to visit this property to satisfy themselves as to the correctness of these details. Please note, we use wide angle camera lenses in order to show as much of each room as possible. This is not intended to mislead any prospective purchasers or tenants in any way and an honest verbal description is always available prior to viewing if required.