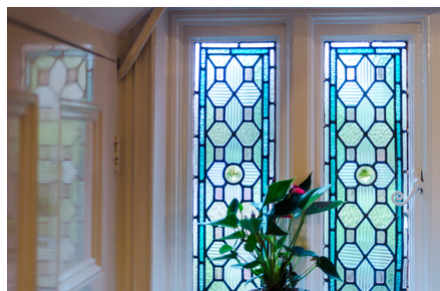


Marlborough Crescent, Stockton Heath, £750,000

Offers In Excess of



EDWARDIAN SEMI-DETACHED HOME -
CORNER PLOT POSITION - FOUR
BEDROOMS - GREAT POTENTIAL -
MATURE GARDENS - BRICK
OUTBUILDINGS

 x 4  x 3

See more of this house at [ashtons.net](https://www.ashtons.net)

