



NEWSON & BUCK  
ESTATE AGENTS



7 Congham Road, Grimston, King's Lynn, Norfolk PE32 1DW

£279,995

Newson and Buck are proud to offer to the market this well presented three bedroom semi-detached bungalow which is situated in the popular village of Grimston, just two miles from the Sandringham Estate. The property has undergone a loft conversion which houses two further bedrooms, en suite to the master bedroom and extra storage areas. The property further comprises of another bedroom down stairs, bathroom, kitchen, lounge, dining room and conservatory. To the rear of the property an enclosed garden can be found along with a garage and space to the front for off road parking for numerous cars. The property has also benefited from double glazing and a new boiler within the past three years. Local amenities can be found within walking distance in the form of the village shop and doctors surgery with more extensive facilities in Kings Lynn town centre.



01553 775151



### Kitchen

7' 2" x 18' 8" (2.18m x 5.69m) Tiled flooring, bespoke fitted kitchen units, one radiator, two double glazed windows, space for dish washer, fridge freezer and washing machine, electric oven with extractor, ceramic sink with mixer tap.

### Lounge

12' 06" x 18' 07" (3.81m x 5.66m) Fitted carpet, one double glazed window, two radiators.

### Bathroom

6' 05" x 7' 02" (1.96m x 2.18m) Tiled flooring, free standing sink unit, bath tub with shower attachment, one double glazed window, one towel radiator.

### Dining Room

9' 6" x 15' 8" (2.90m x 4.78m) Tiled flooring, one radiator, double glazed patio doors to conservatory, staircase to first floor.

### Conservatory

9' 4" x 14' 1" (2.84m x 4.29m) Tiled flooring with double glazed windows and patio doors to rear garden.

### Bedroom / Office

8' 10" x 10' 4" (2.69m x 3.15m) Fitted carpet, two double glazed windows, one radiator.

### First Floor Landing

Fitted carpets, two walk in storage spaces within the eaves.

### Master Bedroom

9' 11" x 10' 5" (3.02m x 3.17m) One double glazed window, one radiator, fitted carpets.

### En-Suite

6' 0" x 6' 11" (1.83m x 2.11m) Vinyl flooring, low flush W/C, walk-in shower, sink, towel radiator.

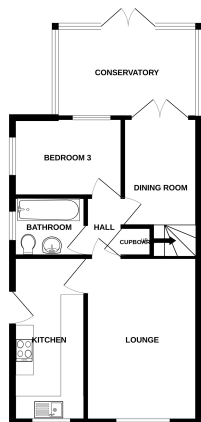
### Bedroom Two

9' 0" x 12' 2" (2.74m x 3.71m) Fitted carpets, one double glazed window, one radiator.



GROUND FLOOR

1ST FLOOR



While every attempt has been made to ensure the accuracy of the foregoing information, the advertiser, agent and agent's office do not accept any responsibility for errors or omissions or for any consequences arising therefrom. The plan is a simplified diagram only. It should not be used as the basis for any purchase. The plan, layout, fixtures and fittings shown here have been based on the plan and are not intended to be a substitute for a professional survey.