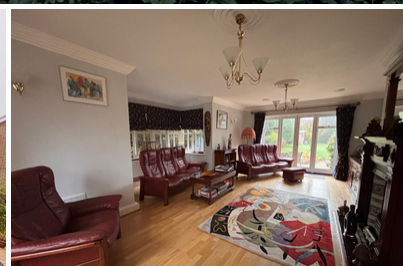


44 Hutton Road
Shenfield Brentwood
Essex CM15 8LB

Telephone: 01277 203322
Email: info@courtco.co.uk
Web: www.courtco.co.uk

COURT CO



Hazelden, Shenfield Place, Shenfield, Brentwood, Essex, CM15 9AJ
£1,600,000



Available for the first time since its construction by Berkley Homes is this spacious detached five bedroom family home. Located in the leafy tree lined part of Shenfield Place adjacent to Hallwood Crescent the property has been well maintained by the owners and also extended to provide an impressive family/Games room. Occupying a large wide plot with considerable road frontage the house also boasts a large unoverlooked rear garden. St Marys, Brentwood and Beckett Keys Schools are within easy walking distance. Shenfield High Street, Mainline and Elizabeth line Station are just a few minutes walk away too.

- FIVE BEDROOMS
- LARGE LOUNGE
- FAMILY ROOM
- GAMES ROOM
- DOUBLE GARGE
- LARGE FRONT & REAR GARDENS
- TWO EN-SUITES
- DINING ROOM
- STUDY
- UTILITY ROOM
- CENTRAL SHENFIELD LOCATION
- BESPOKE KITCHEN



Ground Floor

Entrance Hall

Ground Floor Cloak Room

Study

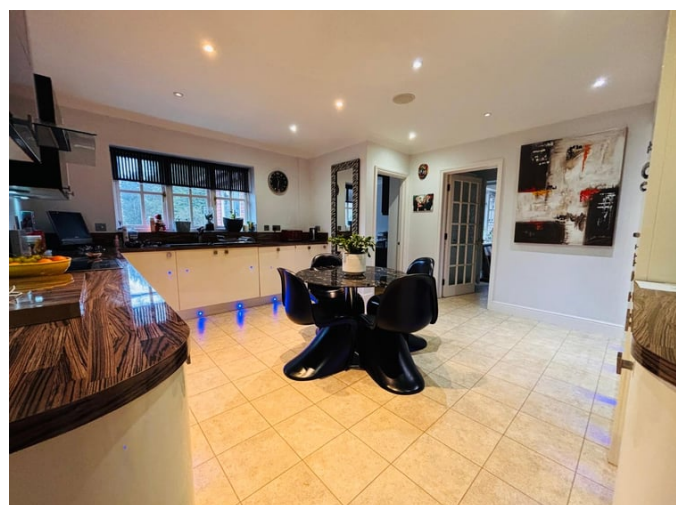
Lounge



Dining Room



Kitchen Breakfast Room



Family Room



Utility Room

Games Room

Fist Floor

Bedroom One



En-Suite

Bedroom Two



En-Suite

Bedroom Three

Bedroom Four

Bedroom Five

Family Bathroom

External

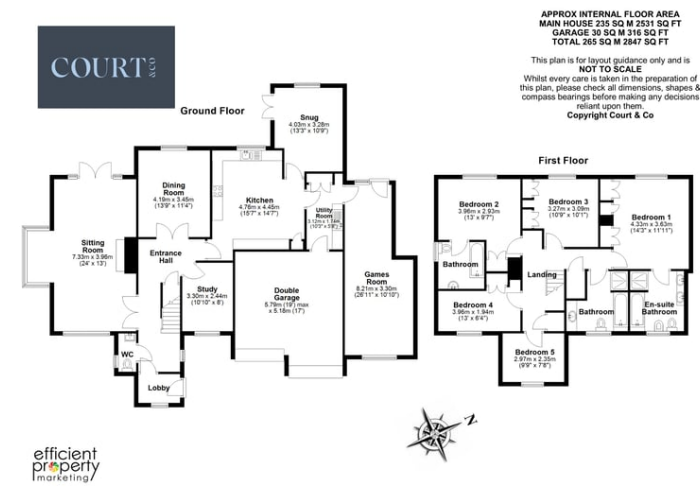
Front Garden

Rear Garden



Double Garage

Floor Plan



PROPERTY MISDESCRIPTIONS ACT 1991

The Agents not tested any apparatus, fixtures and fittings, or services, so cannot verify that they are in working order or fit for the purpose. The buyer is advised to obtain verification from his or her Professional Adviser. Refernces to the Tenure of the property are based on information supplied by the Vendor. The agent has not had sight of the title documents. The buyer is advised to obtain verification from their Solicitor. You are advised to check the availability of any property before travelling any distance to view.