



32 Kilby Court, Greenroof Way, LONDON. £295,000 **SE10 0PY.**

Spacious second floor one bedroom apartment located on the highly sought after Greenwich Millennium Village development. This bright and airy apartment is flooded with natural light from the floor to ceiling windows. Further benefits include a private balcony, residents communal garden, 24 hour concierge services and onsite shops and pharmacy. The development is located a short walk from North Greenwich tube station (Jubilee Line), the Emirates Cable Cars and the O2 with the many attractions within, including bars and restaurants. It is also within walking distance to Sainsburys, Aldi, Asda and Ikea. The development is also home to an excellent primary school, nursery and Eco park.

Viewing by appointment with 1st avenue.

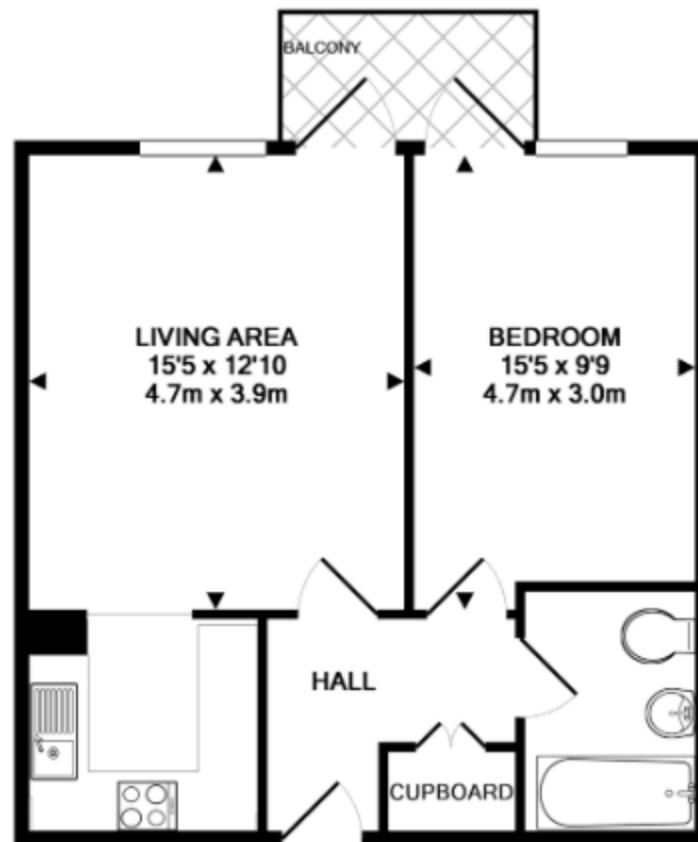
Call: 020 8293 8600

1st avenue, 128 Metcalfe Court, West Parkside, London SE10 0EL
email: info@1stavenue.co.uk

32 Kilby Court, Greenroof Way, LONDON, . SE10 0PY.

£295,000

1stavenue
Real Estate Services



TOTAL APPROX. FLOOR AREA 513 SQ.FT. (47.6 SQ.M.)

Whilst every attempt has been made to ensure the accuracy of the floor plan contained here, measurements of doors, windows, rooms and any other items are approximate and no responsibility is taken for any error, omission, or mis-statement. This plan is for illustrati purposes only and should be used as such by any prospective purchaser. The services, systems and appliances shown have not been tested and no guarantee as to their operability or efficiency can be given

Made with Metropix ©2014

Viewing by appointment with 1st avenue.

Call: 020 8293 8600

1st avenue, 128 Metcalfe Court, West Parkside, London SE10 0EL
email: info@1stavenue.co.uk

1stavenue
Real Estate Services