

5 Bedroom(s), Detached House, Freehold

Bawtry Road, Bessacarr.



- 3D Virtual Tour Available
- Spacious and Well Presented Detached Family Home
- Utility Room and Ground Floor Toilet
- Five Bedrooms En Suite To Master
- Generous Gardens to the Front and Rear

- No Chain
- Kitchen Diner
- Multiple Reception Rooms
- Sauna
- Detached Multi Room Garage Built Over Two Floors

£695,000
For Sale

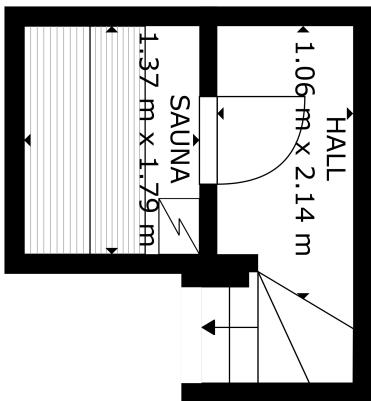
Book your viewing today Tel: 01302 247754

Owner's View

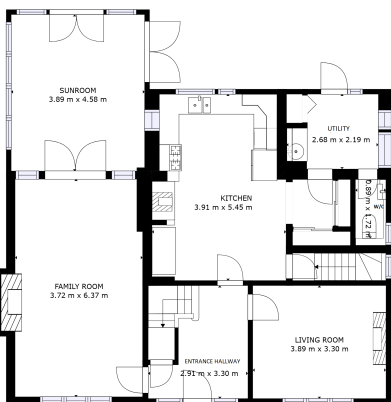
3D Virtual Tour Available- Take a closer, more detailed look around via our 3D Virtual Tour! Don't forget that you can also check availability for viewings online via a visit to our website... Location, Location, Location! This stunning 5 bedroom, 4 bathroom home on Bawtry Road is a must-see. This spacious and well presented property is in a highly sought after location. Boasting lots of living space including a spacious lounge, garden room looking out over the impressive garden, a snug, kitchen diner and even its very own sauna this home has something for everyone. Outdoors you will find generous gardens, a garage with multiple rooms that could be utilised as a office or annex and multiple car parking spaces. Book your viewing today via the link below.
<https://www.thepropertyhive.co.uk/property-for-sale/details/26714701>

Ground Floor

Floor Plan



FLOOR 1



FLOOR 2

Matterport

Matterport



Kitchen Diner



Entrance Hall





Lounge



Snug



Utility Room



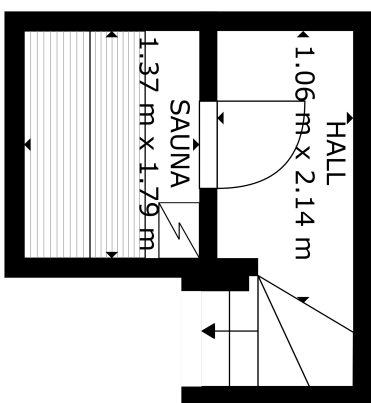
Garden Room



Ground Floor W/C



Sauna



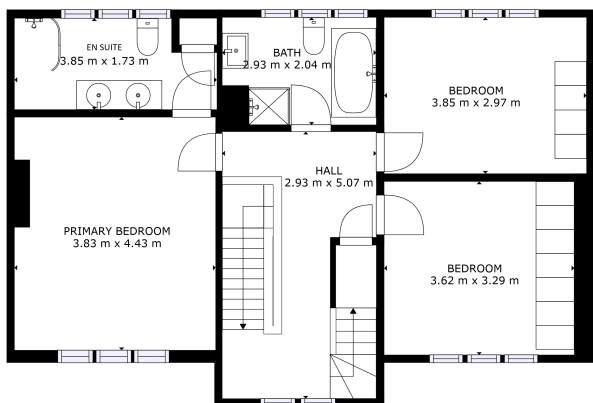
FLOOR 1

GRAND TOTAL AREA
FLOOR 1: 6 m², FLOOR 2: 100 m²
FLOOR 3: 71 m², FLOOR 4: 30 m²
EXCLUDED AREAS: - REDUCED HEADROOM BELOW 1.9m, 6 m²
TOTAL: 107 m²

Matterport

First Floor

Floor Plan



FLOOR 3

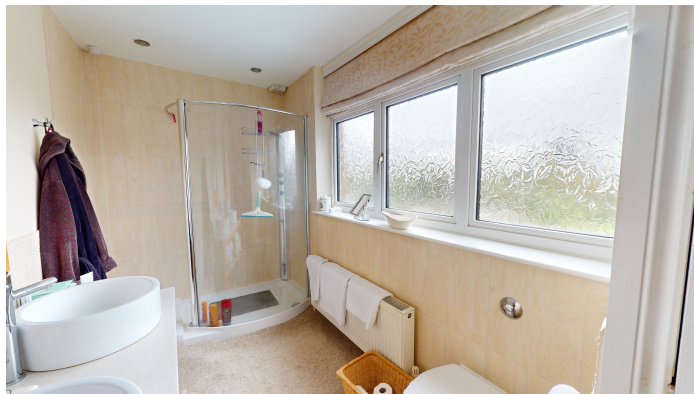
GRAND TOTAL AREA
FLOOR 1: 6 m², FLOOR 2: 100 m²
FLOOR 3: 71 m², FLOOR 4: 30 m²
EXCLUDED AREAS: - REDUCED HEADROOM BELOW 1.9m, 6 m²
TOTAL: 107 m²

Matterport

Master Bedroom



En Suite



Second Bedroom



Third Bedroom

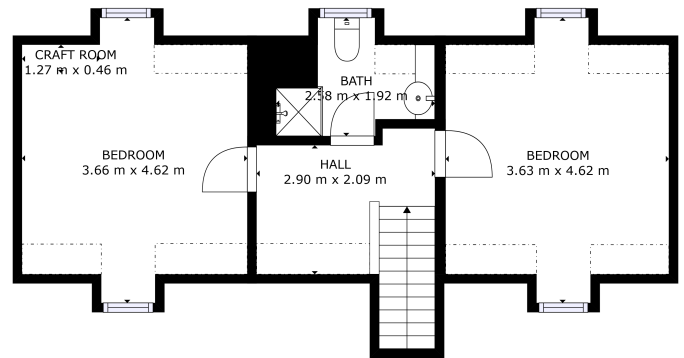


Family Bathroom



Second Floor

Floor Plan



GRAND INTERNAL AREA
FLOOR 1: 6 m², FLOOR 2: 106 m²
FLOOR 3: 11 m², FLOOR 4: 10 m²
EXCLUDED AREAS: - REDUCED HEADROOM BELOW 2.1m: 6 m²
TOTAL: 133 m²
SIZES AND DIMENSIONS ARE APPROXIMATE, ACTUAL MAY VARY

Matterport

Fourth Bedroom



Fifth Bedroom



Shower Room



External

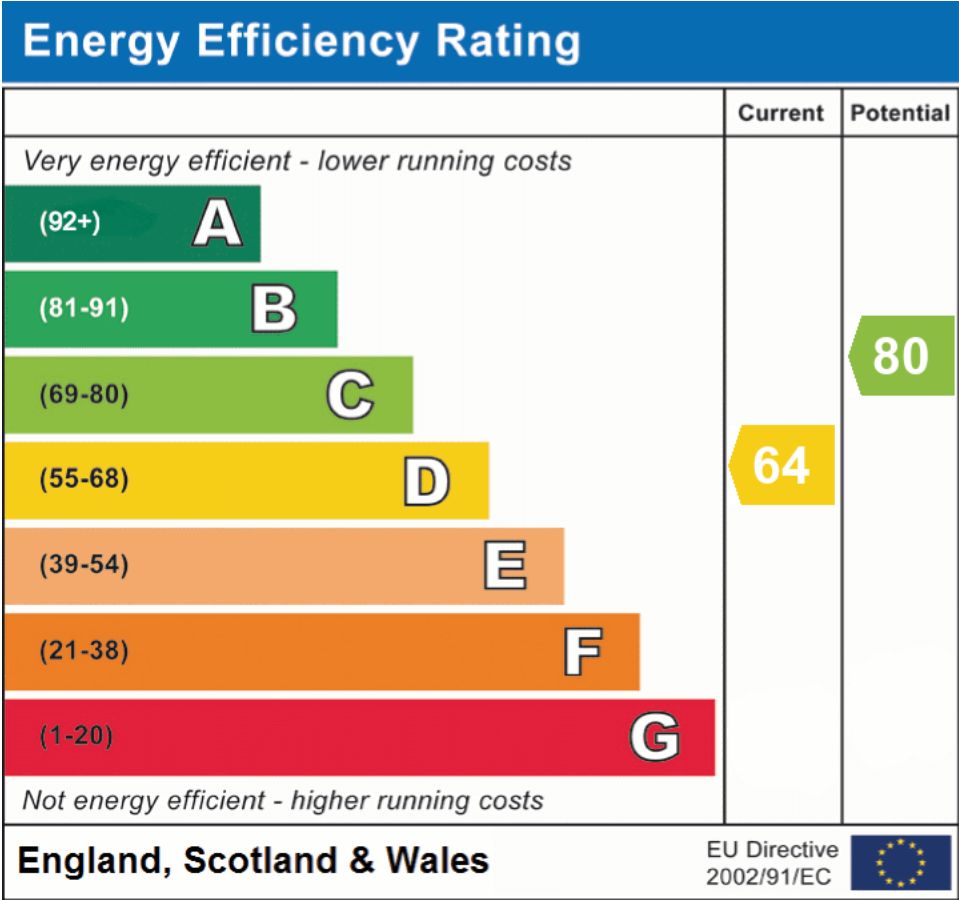


Front Aspect



Rear Garden

Energy Performance Certificate



All measurements provided are approximate and should be verified before exchange of contracts. No appliances have been tested and should be checked to ensure they are in good working order.