



32 Glebe Place, Horton Kirby, Dartford, Kent, DA4 9DS
£550,000 Freehold

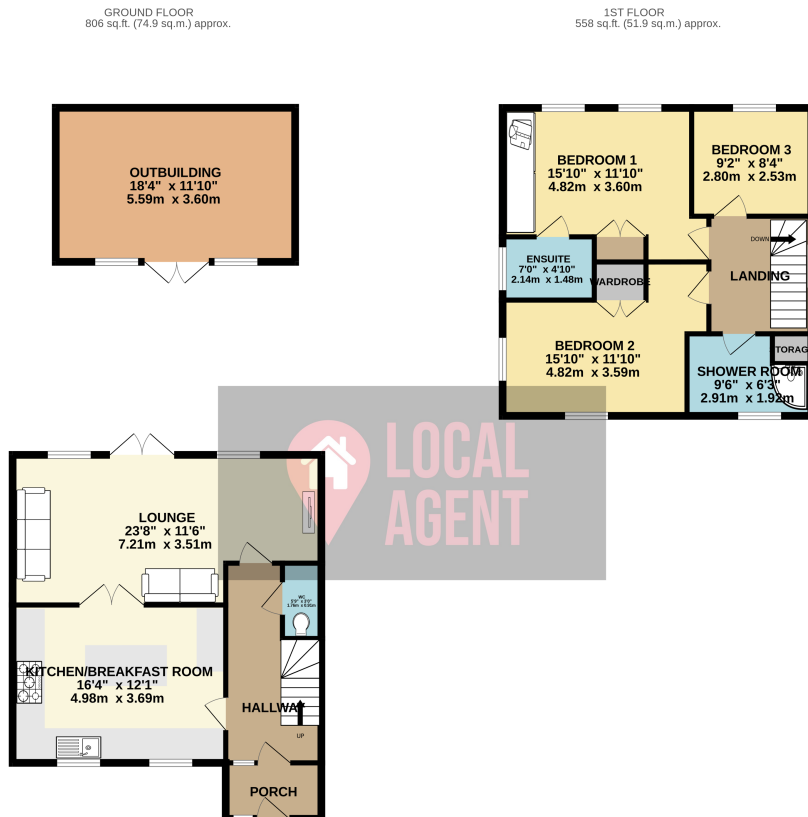


Description

Guide Price £550,000-£600,000

Situated at the end of cul de sac you will find this beautifully decorated modern detached family home with three double bedrooms, ensuite shower room to the main bedroom, four piece bathroom suite and ground floor WC. The living space is excellent for a family to enjoy with a modern kitchen with island and integrated appliances. The living room is across the entire back of the house with double doors leading to the garden which is ideal for children to play and BBQs. At the rear garden there is purpose built outbuilding which is used as a bar and gym. We are expecting a lot of interest on this home so book your viewing via our online diary.

Perfectly located for easy access to Horton Kirby, Sutton at Hone, Farningham and Eynsford villages, this home has a semi rural feel to it. Ideal location for commuters within walking distance to Farningham Road station at 0.9 miles. Other stations a short drive away to Swanley 3.6 miles, Longfield 4.2 miles, Ebbsfleet International Station 6.5 miles, (All distances are approximate) The home has excellent access to motorway networks. The M25 at Junction 3 offers access to Gatwick, Stansted and Heathrow. M20 provides convenient access to London and the Kent coast. The area has an excellent range of schools including Dartford Grammar and The Leigh Academy. Sutton-at-Hone Primary School, Horton Kirby Primary School and Anthony Roper Primary School which all currently rated at good but aspiring to be outstanding are a short distance away. Locally there are many excellent leisure facilities including Bluewater shopping centre, Golf Courses and famous Brands Hatch motor racing circuit (3,2miles away). You will also find a range of boutique shops, country pubs and restaurants in the surrounding villages. The home is situated on the top of a hill with stunning rural views across agricultural fields. For dog walkers and hikers there are many trails to follow including the 19 mile long Darent Valley Path and woods including one of the most valuable areas of w



TOTAL FLOOR AREA: 1365 sq.ft. (126.8 sq.m.) approx.

Whilst every attempt has been made to ensure the accuracy of the floorplan contained here, measurements