

Park Villas, Weston-Super-Mare, Somerset. BS23 2AS

£149,500 Freehold

FOR SALE

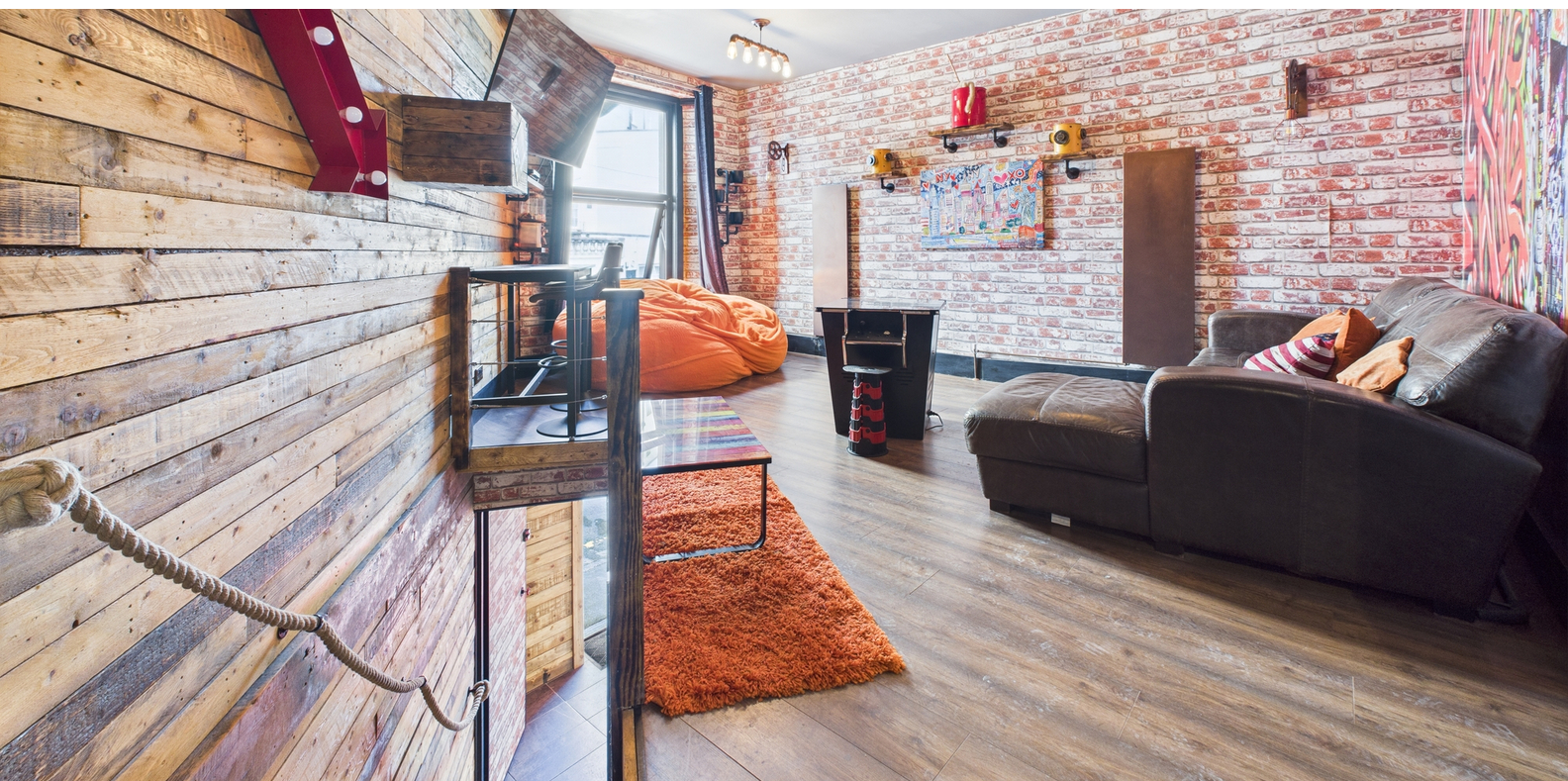


PROPERTY DESCRIPTION

HOUSE FOX ESTATE AGENTS PRESENT... ** One Bedroom House ** If you're searching for a property that offers individuality, creativity, and versatility, then this stunning home must be seen to be fully appreciated. Lovingly curated and decorated to an exceptional standard throughout, this property is a true hidden gem a perfect blend of character, flair, and practicality. Upon arrival, you're immediately welcomed by the property's distinctive façade, complete with an ornamental shark's head feature that gives just a hint of the quirky and artistic style that lies within. Step through the front door into a charming entrance hall, clad in stylish wooden panelling that sets the tone for the rest of the home. From here, access is provided to a generously sized room currently utilised as a laundry space. With its flexible layout, this area could easily be reimagined as a hobby room, home office, gym, or even an additional bedroom, depending on your needs. A further internal door leads to another spacious room that offers even more flexibility. Although this room does not feature a window, its size and potential are impressive making it ideal as a second reception room, cinema room, guest bedroom, or a peaceful reading snug. The clever use of space throughout the property offers a rare level of adaptability that suits a wide range of lifestyles. Back in the entrance hall, a staircase leads you up to the main living areas, where the property's unique charm truly comes to life. The main reception space is bursting with character, boasting graffiti-style feature walls, artistic lighting, and a vibe that simply can't be replicated. A UPVC double-glazed window to the front allows in plenty of natural light, while wall-mounted radiators ensure the space remains cosy all year round. This room effortlessly blends edgy design with comfort, offering a fantastic space to relax, entertain, or simply admire the bespoke interior. Leading off the main living area is the kitchen, designed with both practicality and personality in mind. There's also access to the bedroom a warm, inviting space that continues the property's unique design language, right down to the individually selected and artistically repurposed door handles. This level of attention to detail carries into the private shower room, accessible directly from the bedroom, which features a fully enclosed waterfall shower, a sleek vanity wash basin with copper mixer taps, a heated towel rail, and beautifully chosen finishes throughout. Whether you're a creative spirit looking for a home that reflects your personality, a professional needing flexible working areas, or simply someone who appreciates standout design and meticulous finishing this property is unlike anything else on the market

FEATURES

- 360 VIRTUAL TOUR AVAILABLE
- One Bedroom Exceptional House
- Living Room/Dining Room
- Downstairs Reception Room
- UPVC Double Glazing + Gas Central Heating
- Close to Weston Sea Front + Town Centre
- Beautifully Designed Shower Room
- EPC - D
- Laundry Room Downstairs
- Kitchen Area Opens into the Living Room/Dining Room



ROOM DESCRIPTIONS

Entrance

Main front door opening through to;

Entrance Hall

With stairs rising to open plan living areas and bedroom, also from the entrance hall you have access to;

Laundry Room

10' 1" x 8' 10" (3.07m x 2.69m) Great bit of space for storage or housing a utility area.

Downstairs Reception Room

22' 4" x 11' 7" (6.81m x 3.53m) Currently under work at the moment this room is a great area and has multiple use, it can be used as office space, a living room or even a guest room (Please note there is no window in the room)

Stairs Rising to Living Areas

Open Plan Living Room/Dining Room

10' 9" x 17' 4" (3.28m x 5.28m) This beautifully presented open-plan living and dining area offers a spacious and versatile environment, perfect for both relaxing and entertaining. A large UPVC double-glazed window to the front aspect allows for an abundance of natural light, enhancing the sense of space and warmth throughout the room. The space is heated via modern wall-mounted radiators, ensuring comfort all year round. The room features a range of distinctive and eye-catching light fittings that add a touch of individuality and style, complementing the overall aesthetic. The décor is both bold and thoughtfully curated, showcasing a unique design approach that has been executed to an exceptionally high standard. There is ample room for a variety of furniture layouts, whether you're envisioning a cosy lounge area or a formal dining space. The layout provides a seamless flow through to the adjacent kitchen, while also offering direct access to the bedroom, further enhancing the practical and connected feel of the home.

Kitchen

9' 4" x 5' 8" (2.84m x 1.73m) Range of wall and base units inset sink and drainer with mixer taps over, integrated hob and oven with extractor fan over, wall mounted boiler.

Bedroom

13' 2" x 10' 4" (4.01m x 3.15m) UPVC double glazed obscure window to rear aspect, radiator and door to;

Shower Room

12' 10" x 4' 10" (3.91m x 1.47m) Fully enclosed shower cubicle with waterfall shower attachment, low level WC, vanity wash hand basing with copper mixer taps over, heated towel rail.



FLOORPLAN & EPC

