

elevation

estate agents | est. 1992

9 Whittle Court,
Knowlhill, Milton Keynes, MK5 8FT

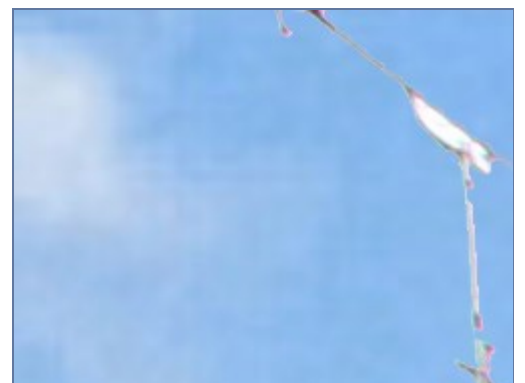
Tel: 01908 231 551
mail@elevationestateagents.com



**47 Dorchester Avenue, Bletchley, Milton
Keynes, Buckinghamshire, MK3 6PQ**

£225,000 Freehold

- Three bedrooms
- Conservatory
- Large lounge / diner
- Gardens
- Terraced
- Located in the desirable Bletchley
- Good school catchment
- EPC Rating D





This is a Great three bedroom terraced home located within a cul de sac. The accommodation comprises entrance porch, open-plan lounge/diner, large kitchen with door leading to the rear garden, conservatory three bedrooms and family bathroom. Outside there is a lovely private rear garden and a and the front garden is laid to lawn. Please call the elevation team today to arrange your viewing.

GROUND FLOOR

Entrance Porch

Doors leading to:

Kitchen

6.54m x 2.77m (21' 5" x 9' 1")

Lounge

6.39m x 3.21m (21' 0" x 10' 6")

Conservatory

FIRST FLOOR

Landing

Doors leading to:

Bedroom One

Bedroom Two

3.68m x 1.83m (12' 1" x 6' 0")

Bedroom Three

3.21m x 2.67m (10' 6" x 8' 9")

Family Bathroom

Fitted to comprise three piece suite

EXTERIOR

Front Garden

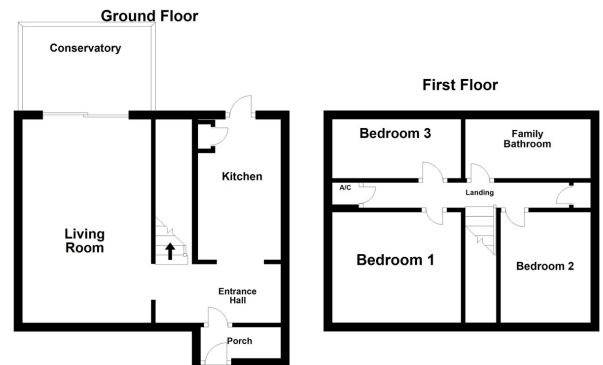
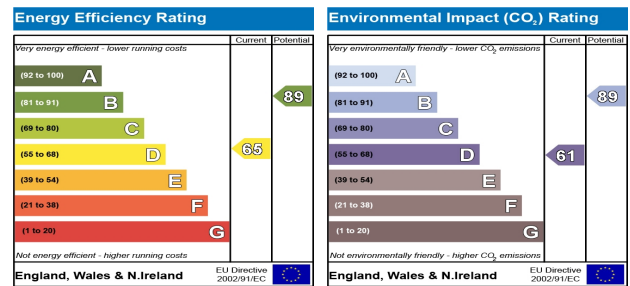
Rear Garden

Off Road Parking

Space for one vehicle

Disclaimer

Whilst we have endeavoured to prepare our sales particulars accurately none of the services, appliances or equipment have been tested. A buyer should satisfy themselves on such matters prior to purchase. Any measurements or distances mentioned in these particulars are for guide reference only. If such particulars are fundamental to a purchase, buyers should rely on their own enquiries. All enquiries should be directed to Elevation Estate Agents in the first instance.



Floor plans are for layout purposes only
Plan produced using PlanUp.