



Oak Tree Gardens,

Bromley, Kent. BR1 5BE

Tenure: Freehold

3 Bedrooms | 1 Reception Room | 1 Bathroom



Set in this delightful tree lined residential road amidst similar age and style properties, we are pleased to offer this classic bay fronted three bed roomed house set at the end of this small terrace. Having in our opinion, been well maintained by the current owners, the accommodation comprises, entrance hall, living room and a kitchen/dining room that opens on to a large conservatory, whilst to the first floor are to be found three bedrooms and a family bathroom off a landing. Externally there are landscaped gardens with the rear garden having a useful summer house. EPC Rating: TBA

Enquiries To:

T: 020 8467 2252

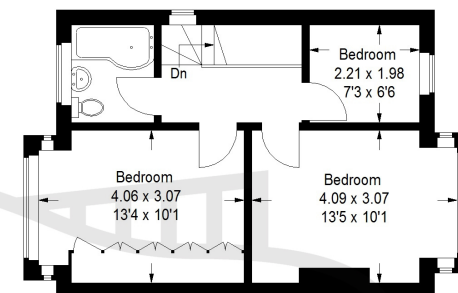
E: beosales@georgeproctor.com



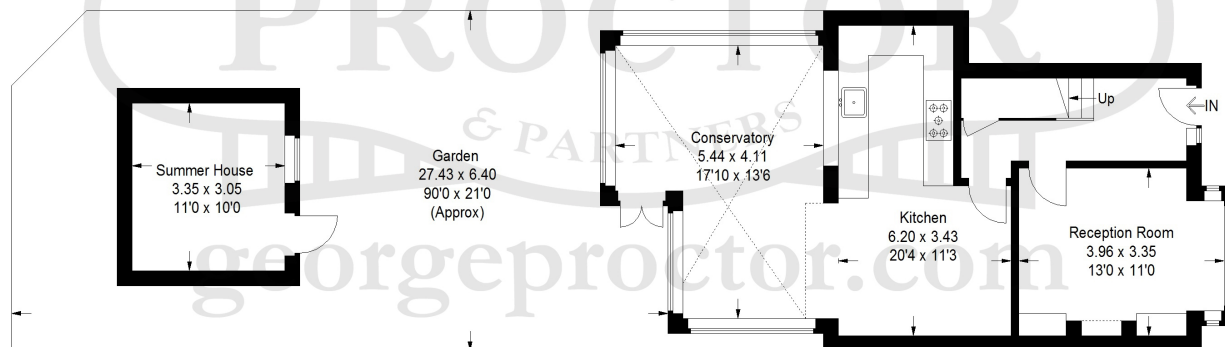
The Bickley Estate Office

Southborough Road, Bickley, Kent, BR1 2EB

Approximate Gross Internal Area = 100.0 sq m / 1076 sq ft
Summer House = 10.4 sq m / 112 sq ft
Total = 110.4 sq m / 1188 sq ft



First Floor



Ground Floor

These particulars whilst believed to be accurate are made without responsibility on the part of the vendor or agents, their accuracy is not guaranteed nor do they form part of any contract and no warranty is given. Services or appliances have not been tested and no guarantee can be given as to their operation, buyers should seek professional advice where necessary. All measurements are approximate and may be rounded to the nearest three inches (10 cm). Floor plans, where shown, are indicative only. Any photographs included may be taken with the use of a wide angle lens. If there is a matter of particular interest please contact us for further information, especially before travelling any distance to view. Map reproduced by permission of Geographers A-Z Map Co Ltd. Licence No. A0514. This map is based upon Ordnance Survey maps with the permission of the controller of Her Majesty's Stationary Office.