



Flat D, 53 Tarmachan Road, Dunfermline, Fife, KY11 8LA

Immaculate Presented, Two-Bedroom, Corner-Aspect, First-Floor Flat

Up to date price and viewing info at mov8realestate.com/property

espc rightmove[®] find your happy Zoopla

Property Description

Immaculately presented, two-bedroom, corner-aspect, first-floor flat, with an allocated parking space. Set in a modern, factored, residential development, east of Dunfermline centre, Fife.

Comprises an entrance hallway, living room, kitchen, two double bedrooms, en-suite shower room and a family bathroom.

Highlights include a modern fitted kitchen and bathroom suites, a south-facing Juliet balcony, double glazing and gas central heating. In addition, there is good integrated storage provision, contemporary flooring and lighting, and tasteful decor throughout.

The development provides a secured entry system, landscaped grounds and ample residential parking.

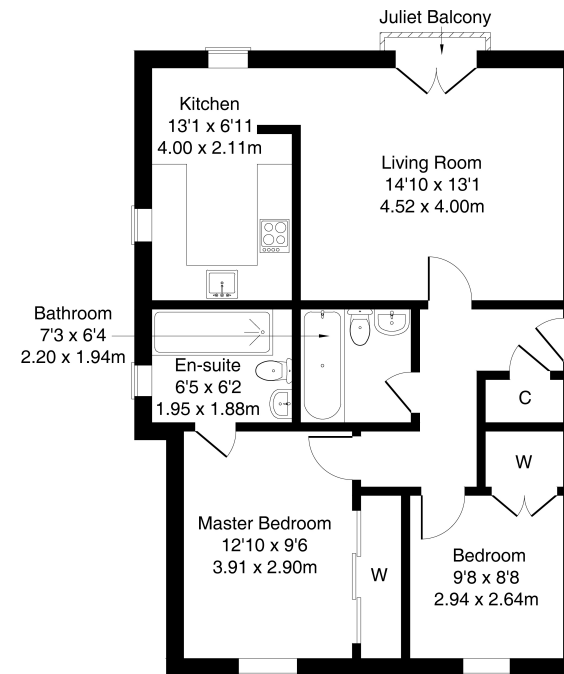
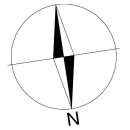
An entrance hall, fitted with built-in cupboard storage and modern, wood-effect flooring, leads into a southerly-facing living room on the right. Fronted by generous glazing, including a door opening onto a Juliet balcony, the stylish reception room offers space and flexibility for both lounge and dining furniture, if desired. Enjoying convenient, open access, a kitchen is fitted with contemporary white units, wood-effect worktops and metro-tiled splashbacks. Appliances include an integrated oven, an induction hob and a stainless-steel canopy, whilst space and plumbing are available for a fridge/freezer and a washing machine.

A well-proportioned master bedroom benefits from integrated wardrobe storage and a modern, en-suite shower room, whilst a spacious second bedroom also enjoys built-in storage and offers a good-sized, versatile space.



53D Tarmachan Road, Dunfermline KY11 8LA

Approximate Gross Internal Area: (753 sq ft - 70 sq m.)



Legal Disclaimer : Floor-plan and measurements are for illustrative guidance only, and not intended to form part of any contract.

Area Description

Dunfermline is a historic town and is the largest in Fife, popular with commuters and within easy access of the M90 motorway with direct links to Edinburgh, Perth and Dundee. The town has a wide range of shops, including the covered Kingsgate Shopping Centre, Halbeath Retail Park, and a selection of supermarkets including an ASDA. The thriving community supports a

range of amenities and leisure facilities, including Fife Leisure Park, Fife College, and well-regarded schools. Outdoor spaces include Pittencreiff Park, Townhill Park and King George V Park. Dunfermline Railway Station provides regular commuting services to Edinburgh, and there is a frequent bus service, with a convenient Park and Ride at Halbeath.





Our Services

-  Free pre-sale property valuations
-  Great value fixed estate agency fees
-  Extensive buyer matching database
-  Purchase and sale conveyancing

Contact Us

0345 646 0208

sales@mov8realestate.com

www.mov8.com

Head Office

6 Redheughs Rigg, Edinburgh, EH12 9DQ

Glasgow Office

77 Renfrew Street, Glasgow, G2 3BZ



Estate Agents and Solicitors



These particulars do not form part of any contract and the statements or plans contained herein are not warranted nor are they to scale. All descriptions, dimensions, areas, reference to condition and necessary permissions for use and occupation and other details are given in good faith, and are believed to be correct, but any prospective purchaser should not rely on them as statements or representations of fact, and any prospective purchaser must satisfy themselves by inspection or otherwise as to the correctness of each of them. The Seller shall not be bound to accept the highest or any offer nor to accept a full offer of the Fixed Price where this is applicable. Approximate measurements have been taken by sonic device and measurements are most often taken to the widest point of any room or space. Services and appliances have not been tested for efficiency or safety and no warranty is given as to their compliance with any Regulations. Offers should be made using the Combined Standard Clauses.