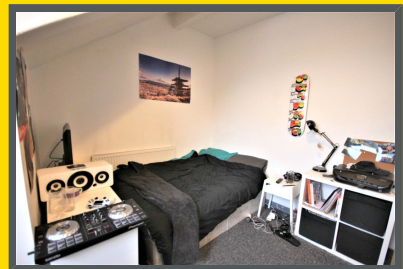


**Harold Terrace**  
**Hyde Park, Leeds, LS6 1LD**  
**£1,842.00 pcm**



- **5 BEDROOMS**
- **2 BATHROOMS**
- **MODERN KITCHEN**
- **£85 PPPW**
- **AVAILABLE 01.07.2019**





# Harold Terrace

## Hyde Park, Leeds, LS6 1LD

### £1,842.00 pcm

£85 PPPW - 5 BEDROOMS - AVAILABLE 01.07.2019

Diamond Properties are pleased to offer this modern, beautifully presented 5 bedroom student house, situated on Harold Terrace, approx 10-15 minutes walk from the main university campus and close to a variety of local amenities. Having a newly fit large white gloss kitchen, separate lounge, two fantastic full bathroom suites, and 5 large double bedrooms, this one will not be around for long!

### Ground Floor

#### Lounge (Reception)

3.63m x 3.45m (11' 11" x 11' 4")

With central heating radiator, double glazed window overlooking Harold Terrace.

#### Kitchen

12'3 x 11'3 (3.73m x 3.43m)

Stainless steel sink unit with tiled splash backs. Built-in stainless steel gas hob and electric oven. Modern wall & base units. Plumbed for automatic washer. Gas boiler. Radiator. Access to rear.

### First Floor

#### Bathroom One

Modern white suite with electric shower over bath and tiled around. Radiator. Extractor fan. Tiled floor.

#### Bathroom Two

Modern white suite with electric shower over bath and tiled around. Radiator. Extractor fan. Tiled floor.

#### Bedroom Three

11'10 x 8'4 (3.61m x 2.54m)

Radiator, Double Glazed window with tiled reveal.

### Second Floor

#### Bedroom Four

11'11 max x 11'4 max (3.63m max x 3.45m max)

Radiator. Dormer window.

#### Bedroom Five

12'9 max x 11'11 (3.89m max x 3.63m)

Radiator. Double glazed velux window.

### Basement

#### Bedroom One

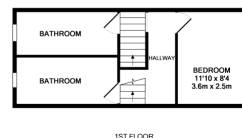
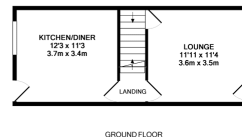
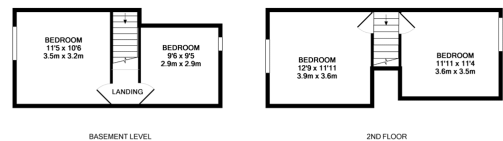
9'6 x 9'5 (2.90m x 2.87m)

Radiator. Recessed spotlighting.

#### Bedroom Two

10'6 x 11'5 (3.20m x 3.48m)

Radiator. Recessed spotlighting.



Whilst every effort has been made to ensure the accuracy of the floor plan contained here, measurements of floor, window, door and any other items are approximate and no responsibility is taken for any error, omission or mis-statement. This plan is for guidance purposes only and should be used as such by any prospective purchaser. The agency, vendors and equipment do not have control over items and the purchaser is to be held responsible for errors or omissions.  
Made with Metronix 02/19

