

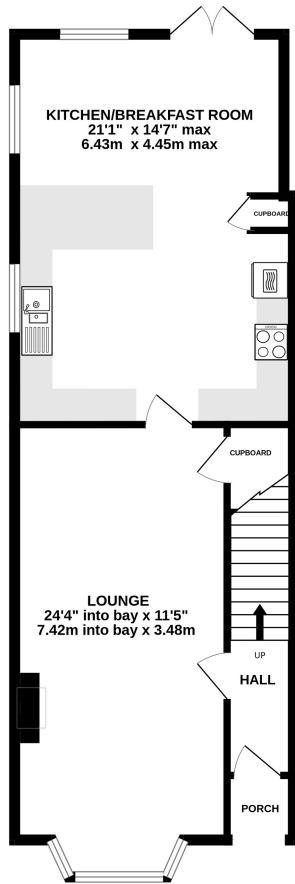
## Crescent Road, Shepperton, TW17 8BP

**£750,000**

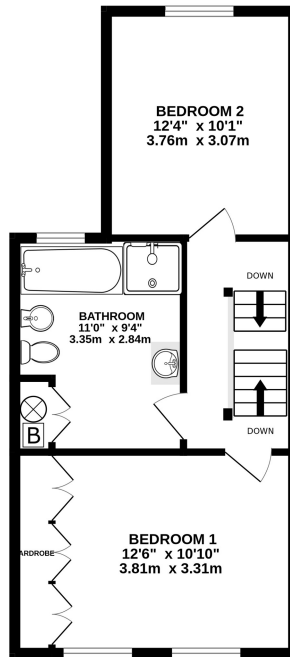


- Victorian Semi Detached House
- Gas Central Heating
- Backing On To The River Ash
- Council Tax Band F - £3,328
- Three Double Bedrooms
- 86" Rear Garden
- Shepperton Railway station 0.5 mile
- Catchment Area for St Nicholas, Saxon and Thamesmead Schools

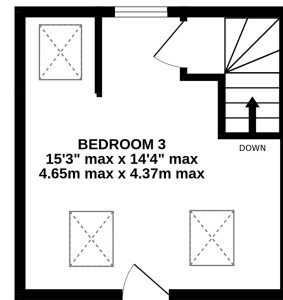
GROUND FLOOR  
654 sq.ft. (60.8 sq.m.) approx.



1ST FLOOR  
459 sq.ft. (42.6 sq.m.) approx.

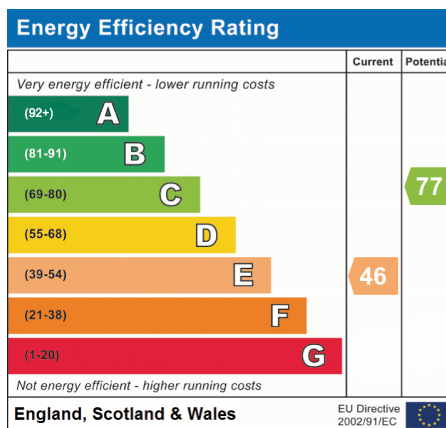


2ND FLOOR  
218 sq.ft. (20.2 sq.m.) approx.



TOTAL FLOOR AREA: 1331 sq.ft. (123.6 sq.m.) approx.

Whilst every attempt has been made to ensure the accuracy of the floorplan contained here, measurements of doors, windows, rooms and any other items are approximate and no responsibility is taken for any error, omission or mis-statement. This plan is for illustrative purposes only and should be used as such by any prospective purchaser. The services, systems and appliances shown have not been tested and no guarantee as to their operability or efficiency can be given.  
Made with Metroplan ©2024.



We have not tested the services or domestic appliances so we cannot verify that they are in working order. The buyer is advised to obtain verification from their solicitor or surveyor. These particulars form no part of any offer or contract and their accuracy cannot be guaranteed.