

REDUCED



11 Hereford Close, Worksop, Nottinghamshire S81 0PP

£185,000 -



78, Bridge Street, Worksop, S80 1JA 01909 509001 [info@bartropanddilks.co.uk](mailto:info@bartropanddilks.co.uk)



## PROPERTY SUMMARY

Offered for sale with no chain with an internal inspection highly recommended is this well presented and decorated three bedroom link detached home that has gas central heating and UPVC double glazed windows. Being set within this sought after area and close to local amenities, the property accommodation comprises of; entrance lobby, lounge with fire surround and electric fire, archway to the dining room with French doors to the rear garden, kitchen. On the first floor; landing, three bedrooms, fitted wardrobes to bedroom one, bathroom in a white modern white suite with bath and shower cubicle. Outside; front and rear garden, driveway to the rear that leads to the garage.

## POINTS OF INTEREST

- *No Chain Involved*
- *Viewing Highly Advised*
- *Close To All Amenities*
- *Three Bedroom*
- *Link Detached*
- *GFCH and uPVC DG*
- *Driveway & Garage*
- *Two Reception Rooms*
- *Bathroom with bath and shower*
- *Well Presented*



## ROOM DESCRIPTIONS

### Ground Floor

#### Entrance Lobby

With entrance door, stairs to the first floor, central heating radiator.

#### Lounge 4.31m x 3.67m (14' 2" x 12' 0")

With a fire surround and electric fire, front facing window, central heating radiator, arch to the dining room.

#### Dining Room 3.35m x 2.65m (11' 0" x 8' 8")

With French doors to the rear garden, central heating radiator.

#### Kitchen 3.37m x 2.55m (11' 1" x 8' 4")

With wall and base fitted units, worksurfaces, sink unit, rear window, door to the garage, plumbing for an automatic washing machine, pantry.

### First Floor

#### Landing

With a side facing window.

#### Bedroom One 3.91m x 2.61m (12' 10" x 8' 7")

Two fitted wardrobes, front facing window, central heating radiator.

#### Bedroom Two 3.17m x 2.61m (10' 5" x 8' 7")

With a rear facing window, central heating radiator.

#### Bedroom Three 2.64m x 2.05m (8' 8" x 6' 9")

With a front facing window, central heating radiator,

#### Bathroom

Fitted in a white modern four piece suite that comprises of; panelled bath, shower cubicle and mains shower, low flush w.c, wash hand basin, rear facing window, tiling, towel rail.

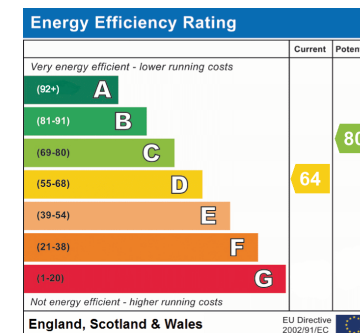
### Outside

#### Gardens

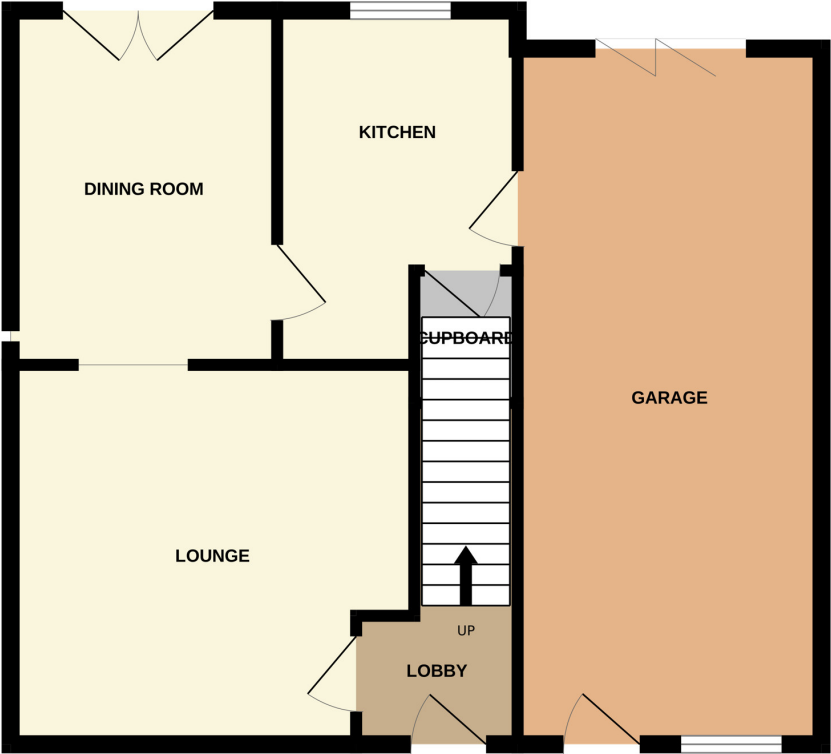
Front and rear gardens.

#### Driveway

#### Garage



GROUND FLOOR



1ST FLOOR

