



Day & Co  
ESTATE AGENTS

28 Cavendish Street

Keighley

BD21 3RG



4 Morningside, Denholme,  
Bradford, West Yorkshire, BD13  
4JP

£189,950

T: 01535 664609

W: [www.dayandcoestateagents.co.uk](http://www.dayandcoestateagents.co.uk)

E: [keighley@dayandcoestateagents.co.uk](mailto:keighley@dayandcoestateagents.co.uk)



- Spacious End Terrace Cottage
  - Lounge & Dining Kitchen
  - Off Road Parking
  - Far Reaching Views
- Three Double Bedrooms
  - Gas Central Heating & Double Glazing
  - Rear Garden
  - EPC Rating E

SUMMARY

**\*\* A DECEPTIVLEY SPACIOUS END TERRACE COTTAGE, 3 DOUBLE BEDROOMS, MASTER EN-SUITE - FAR REACHING VIEWS TO THE FRONT!!\*\*** Having gas central heating, double glazing, rear garden, off road parking **VIEWING ESSENTIAL TO FULLY APPRECIATE!!** EPC rating E.

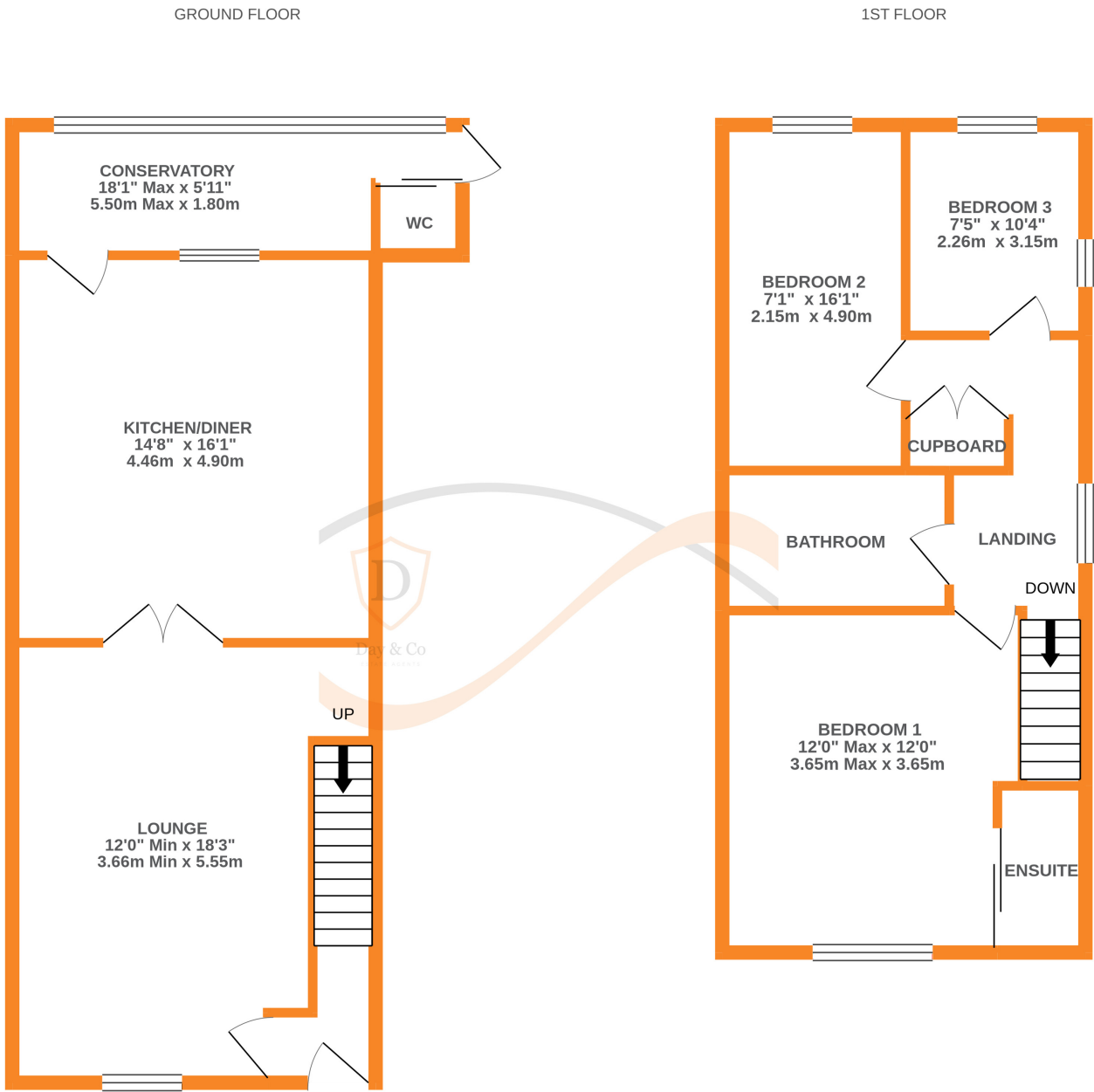
FULL DESCRIPTION

On only an internal inspection can one fully appreciate this deceptively spacious, three bedroom end stone terrace cottage situated in the popular village location of Denholme with excellent access to local schools and access to towns and cities including Keighley, Bingley, Bradford and Halifax.

The well proportioned accommodation comprises of an entrance with stairs to first floor, Pleasant good sized lounge with window to the front and leading through to a large dining kitchen which has a range of base and wall mounted units. Attached conservatory to the rear with w.c. and rear door.

To the first floor there are three double bedrooms, the main one having an en-suite shower and windows to the front. The two remaining bedrooms can be found at the rear with bedroom two having dual aspect windows. The house bathroom has a modern three piece suite comprising of a bath with shower over, WC, wash hand basin.

Externally the property has an off road parking area to the side along with a pleasant rear garden with vegetable plot, far reaching views to the front. Gas central heating and double glazing. EPC rating is E.



Whilst every attempt has been made to ensure the accuracy of the floorplan contained here, measurements of doors, windows, rooms and any other items are approximate and no responsibility is taken for any error, omission or mis-statement. This plan is for illustrative purposes only and should be used as such by any prospective purchaser. The services, systems and appliances shown have not been tested and no guarantee as to their operability or efficiency can be given.  
Made with Metroplex ©2020