



North Street, Northam, Bideford, Devon, EX39 1DH





## North Street, Northam, Bideford, Devon, EX39 1DH

### Guide Price £240,000

Having been thoroughly and painstakingly renovated by our clients, this cottage is more a 'labour of love' than a commercial refurbishment, such is the thought and attention to detail that has gone into breathing new life into this charming home. Full of character blended with tasteful contemporary styling, this cottage will appeal equally to the style conscious and the lover of period properties. The accommodation comprises of ENTRANCE DOOR opening to HALLWAY with flagstone floor, stairs to first floor and door off to SITTING ROOM, a bright yet cosy room with a magnificent brick and stone fireplace with inset woodburning stove and a double glazed window offering sea glimpses. The KITCHEN has been completely refurbished and the high quality fitted kitchen, finished in a tasteful sage green, has been cleverly designed to offer ample worktop and a range of well thought out storage solutions. There is a lovely and characterful painted stone archway / former fireplace now offering the perfect space to accommodate a Range cooker, whilst the ceramic sink is perfectly positioned by the window, overlooking the rear garden and the kitchen is completed with high quality ceramic floor tiles. From the kitchen there is a useful UTILITY ROOM with windows to two sides, door to garden, gas central heating boiler and space for appliances. On the FIRST FLOOR the landing gives access to the MASTER BEDROOM, a bright sunny room with character painted floorboards and two double glazed windows offering sea views, whilst the SECOND BEDROOM is a well proportioned room with window overlooking the rear garden. The FAMILY BATHROOM has been completely refurbished and now offers a stunning suite with roll top bath, sink and vanity unit, W/C and double glazed window.

To the OUTSIDE of the property, the FRONT offers a useful raised courtyard style garden, whilst to the REAR is a charming garden with pear, cherry and apple trees as well as a patio area adjacent to the house with characterful stone garden seat, steps up to a raised lawned garden at the end of which is a charming and useful stone/brick OUTBUILDING with electric and water and suitable for a range of uses and currently providing useful storage space.

# North Street, Northam, Bideford, Devon, EX39 1DH

---

Stunning Character Cottage  
Refurbished Throughout  
Sea Views  
Sought After Northam Location  
Cosy Sitting Room With Wood Burner  
Stunning Fitted Kitchen  
Useful Utility Room  
Master Bedroom With Sea Views  
Second Bedroom Overlooking Rear Garden  
New Bathroom With Roll Top Bath  
Lovely Lawned Rear Garden  
Useful Outbuilding



---

## Entrance Porch

## Entrance Hallway

## Living Room

9' 11" x 12' 2" (3.02m x 3.71m)

## Kitchen

12' 9" x 15' 11" (3.89m x 4.85m)

## Utility Room

7' 7" x 6' 11" (2.31m x 2.11m)

## Stairs To First Flooring Landing

## Bedroom One

12' 9" x 10' 10" (3.89m x 3.30m)

## Bedroom Two

8' 2" x 11' 10" (2.49m x 3.61m)

## Bathroom

## Outside

To the front of the property, there is a useful raised courtyard style garden. Whilst to the rear, there is a charming garden with pear, cherry and apples trees and with a patio area adjacent to the house with characterful stone garden seat, steps up to a raised lawned garden at the end, of which is a charming and useful stone/brick OUTBUILDING with electric and water and is suitable for a range of uses and currently providing useful storage space.

## SERVICES

Services: We understand all mains services are available.

Council Tax Band: B.

Please note: Council Tax bandings can be reassessed after a change of ownership. For further information please contact the local authority.

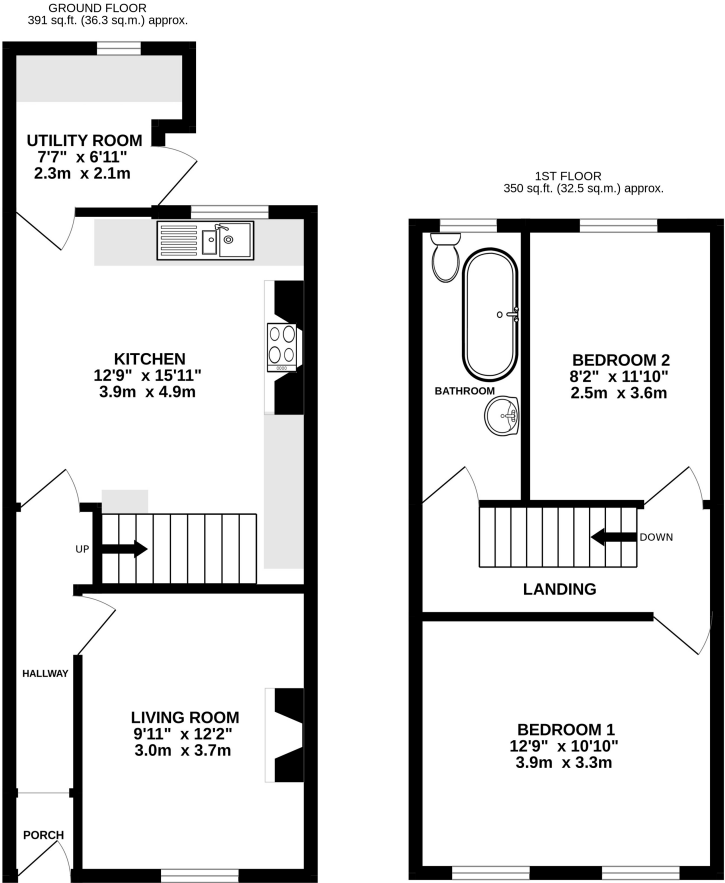
EPC Energy Rating: C.

## DIRECTIONS

To locate, please follow Sat Nav reference EX39 1DH.

*At John Smale & Co we don't just sell houses!  
Contact us now for information on all of our  
other services including Auctions, Commercial  
Property and Market leading independent  
financial advice.*





TOTAL FLOOR AREA : 741 sq.ft. (68.8 sq.m.) approx.  
Made with Metropix ©2025

Any representation made by John Smale & Co Estate Agents, whether orally or in writing made in reference to these particulars, or prior to them being produced is believed to be correct, but its accuracy is not guaranteed, and it should not be relied on. Any areas, land plans, measurements, distance, or orientations are given in good faith but approximate only. The property, its services, appliances, fixtures, and fittings have not been surveyed or tested by John Smale & Co Estate Agents. Any reference to any property alterations is not a statement that any necessary planning, building regulations or other consent has been granted. The agents advise buyers to instruct their chosen solicitors, surveyors, or any other relevant property professionals to clarify any matters concerning the property.

