

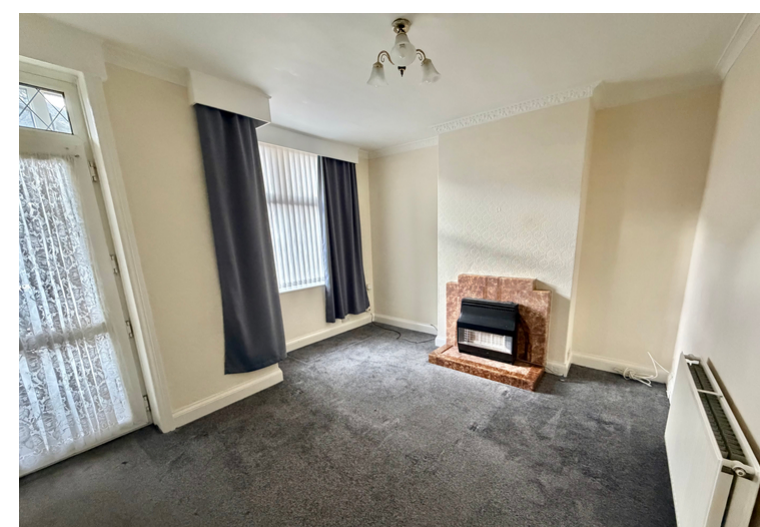


Day & Co
ESTATE AGENTS

28 Cavendish Street

Keighley

BD21 3RG



32 Westburn Avenue, Keighley,
West Yorkshire, BD22 6AW

£129,995

T: 01535 664609

W: www.dayandcoestateagents.co.uk

E: keighley@dayandcoestateagents.co.uk

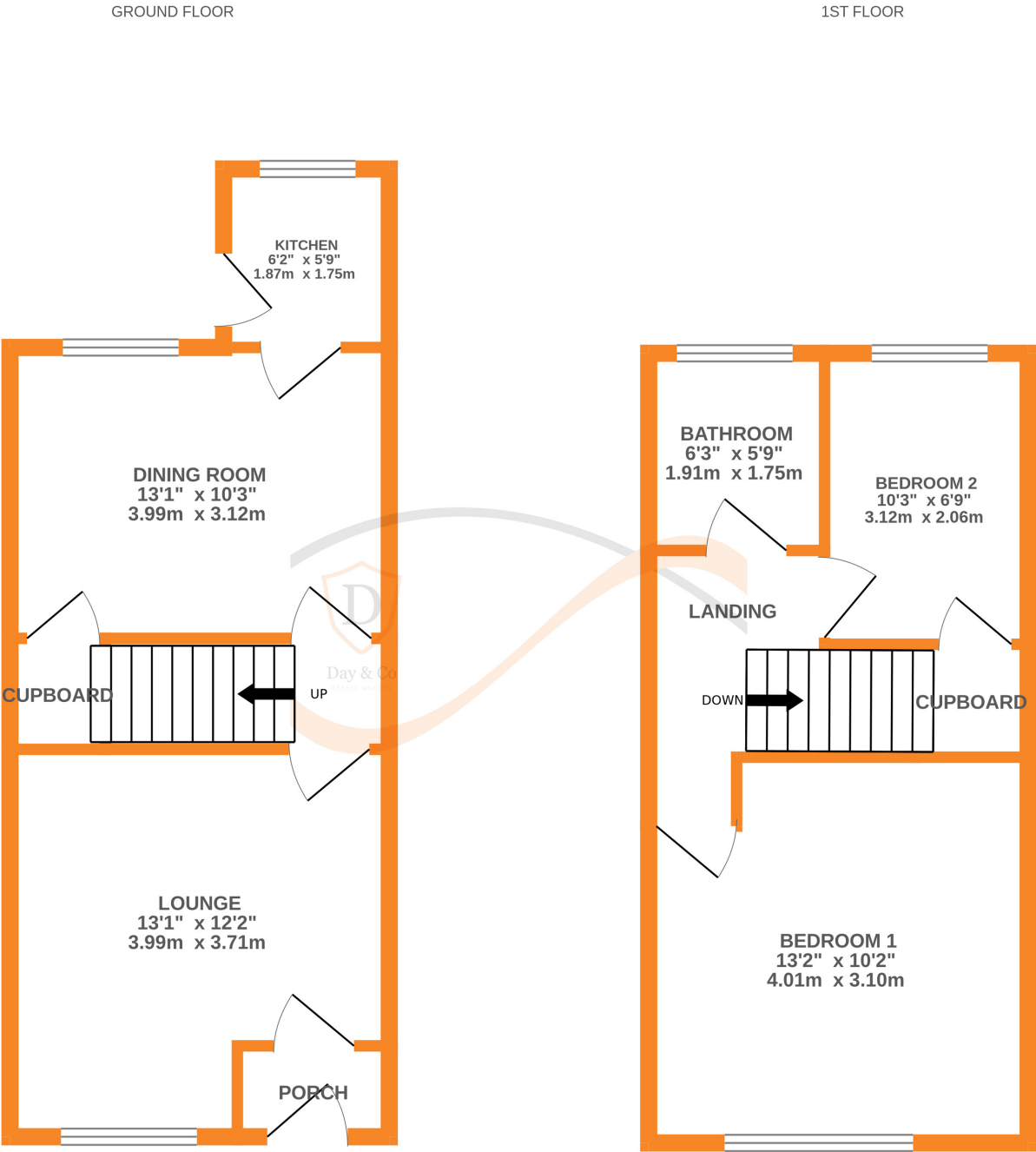
- EPC Rating Is D
 - Two Bedrooms
 - Rear Enclosed Patio & Front Garden
- Well Maintained Mid Town House
 - Two Reception Rooms
 - NO CHAIN

SUMMARY

****A WELL MAINTAINED 2 BEDROOM MID TOWN HOUSE, POPULAR RESIDENTIAL LOCATION WITH EXCELLENT ACCESS TO LOCAL SCHOOLS!!**** Having two reception rooms, gas central heating, double glazing, enclosed rear patio, front garden - OFFERED FOR SALE WITH NO ONWARD CHAIN!! EPC rating is D.

FULL DESCRIPTION

Of interest to a variety of buyers is this well maintained two bedroom mid town house situated in the popular residential location of Exley Head with excellent access to local schools. The accommodation comprises of an entrance porch, the lounge has a gas fire, radiator, double glazed window to the front. The dining room has a built in storage cupboard, double glazed window to the rear, access to the separate kitchen which has a range of base and wall mounted units, double glazed window and door to the rear. To the first floor there are two bedrooms, the bathroom is also on this level having a three piece suite comprising of a bath with shower over, WC, wash hand basin, double glazed window to the rear. externally there is an enclosed rear patio, garden area to the front. Offered for sale with no onward chain, EPC rating is D.



Whilst every attempt has been made to ensure the accuracy of the floorplan contained here, measurements of doors, windows, rooms and any other items are approximate and no responsibility is taken for any error, omission or mis-statement. This plan is for illustrative purposes only and should be used as such by any prospective purchaser. The services, systems and appliances shown have not been tested and no guarantee as to their operability or efficiency can be given.
Made with Metropix ©2026