

81 Blackbrook Lane, Bromley, Kent, BR1 2LS

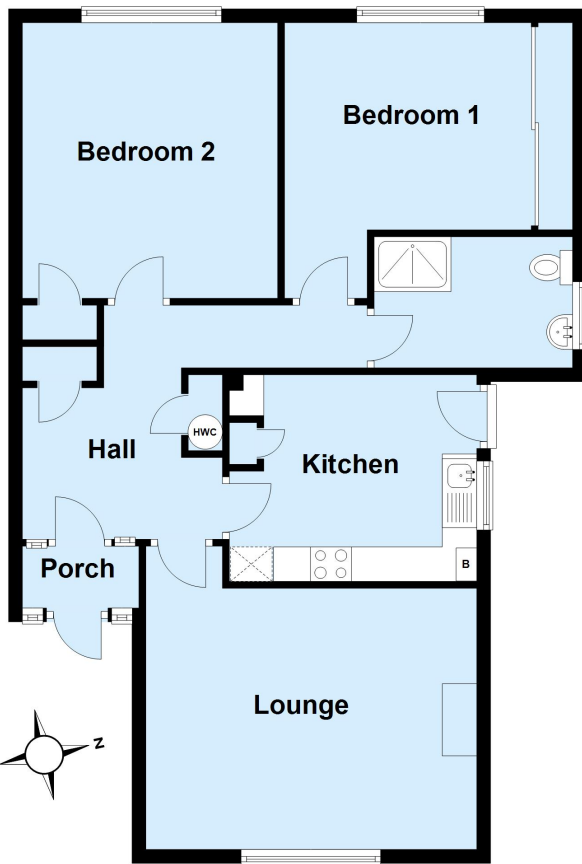
**Property Images**





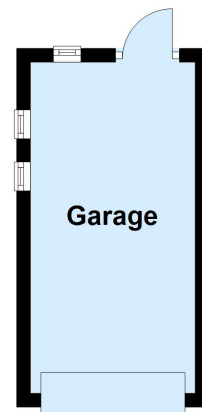
## Ground Floor

Approx. 79.6 sq. metres (857.2 sq. feet)



## Outbuilding

Approx. 0.0 sq. metres (0.0 sq. feet)



Total area: approx. 79.6 sq. metres (857.2 sq. feet)

This plan is for general layout guidance and may not be to scale.  
Plan produced using PlanUp.