



FELLS GULLIVER  
ESTATE AGENTS

023 8028 4411  
[www.fellsgulliver.com](http://www.fellsgulliver.com)

Flat 5 Annesley House, Bank, Lyndhurst, HampshireSO43 7FD

---

£375,000





A delightful period three bedroom apartment in an historic New Forest mansion within a highly sought after Hamlet. The impressive accommodation extends to 1200 sq feet, with delightful gardens and direct access to the Forest.

Bank is a beautiful rural hamlet yet situated only a mile west of the capital of the New Forest Lyndhurst. There is excellent access to the open forest with its wide range of outdoor pursuits. Within Bank can be found the very well regarded public house The Royal Oak. Bank is a fantastic location for those wishing to enjoy the open forest yet still have amenities within striking distance.



This impressive first floor apartment offers excellent accommodation with a wealth of period features and charm, with the grace from a bygone era. A large entrance vestibule sets the tone leading to a spacious hallway where all the principal rooms are accessed.

The apartment is flexible and can offer three bedrooms if required, or two reception rooms and two bedrooms, with a kitchen and bathroom. All the rooms are well proportioned, with views over the communal gardens and the Forest. Of particular note is the sitting room with wood burning stove, porthole window and entertaining space within the turret.

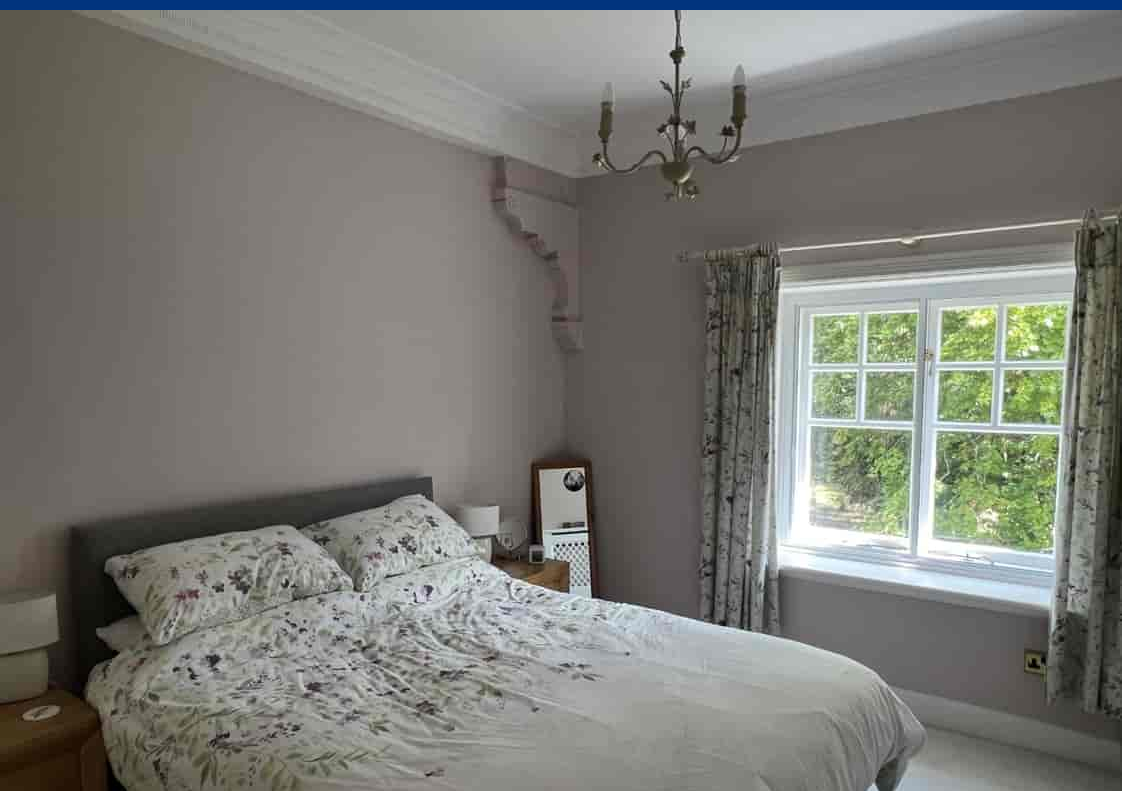




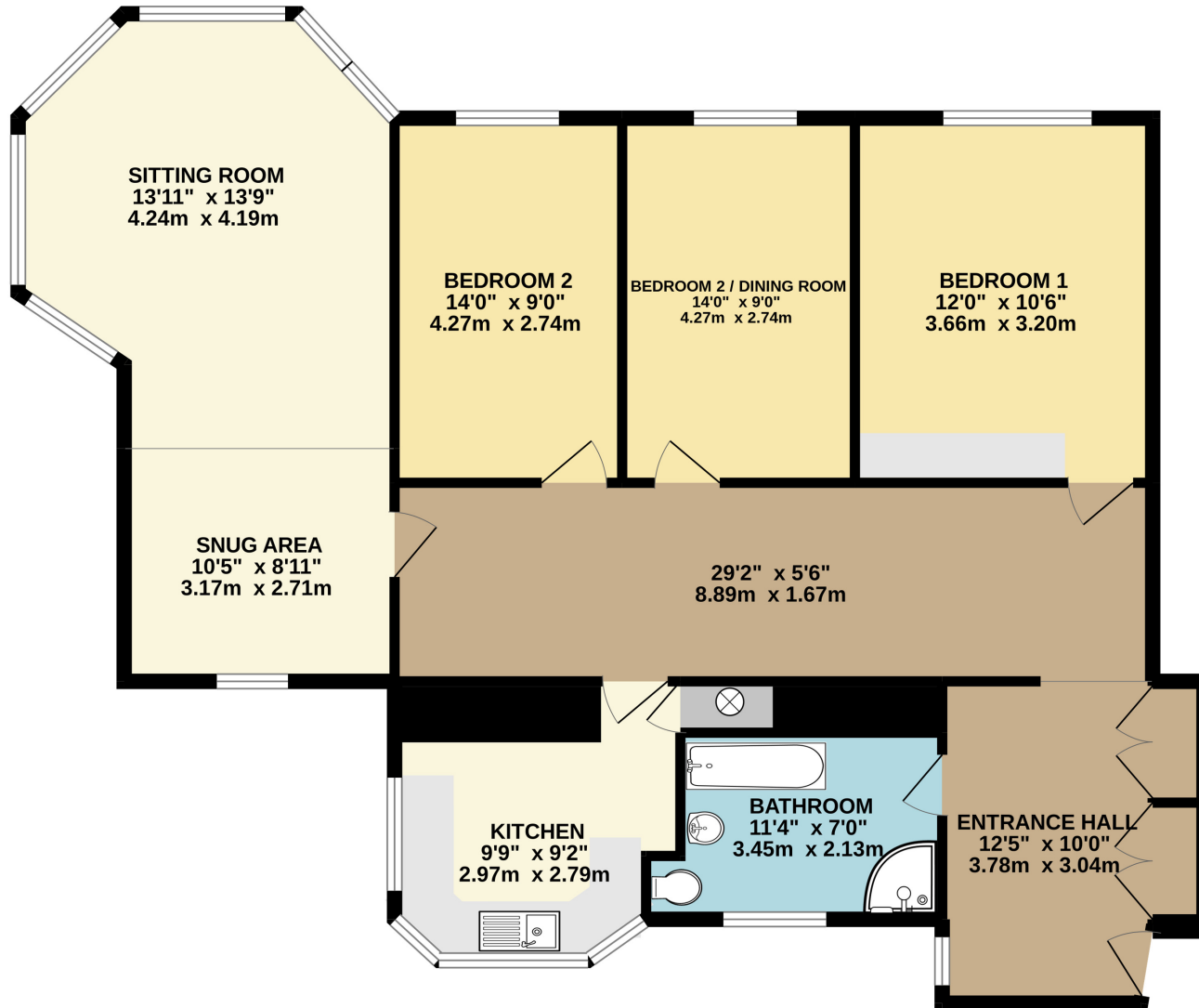


Outside there is a large communal garden, the majority of which is lawned with an array of shrubs and trees offering privacy, there is also a single garage.

Annersley House is a superb Country House dating from the mid 1800's and has an interesting history previously being the home of the acclaimed novelist Mary Braddon. The Hamlet of Bank which has a great pub The Royal Oak and is approximately 1 mile from the capital of the New Forest Lyndhurst. We believe this apartment will provide a wonderful permanent home or pied-du-terre.



GROUND FLOOR  
1220 sq.ft. (113.4 sq.m.) approx.



TOTAL FLOOR AREA: 1220 sq.ft. (113.4 sq.m.) approx.

Whilst every attempt has been made to ensure the accuracy of the floorplan contained here, measurements of doors, windows, rooms and any other items are approximate and no responsibility is taken for any error, omission or mis-statement. This plan is for illustrative purposes only and should be used as such by any prospective purchaser. The services, systems and appliances shown have not been tested and no guarantee as to their operability or efficiency can be given.

Made with Metropix ©2022



**FELLS GULLIVER**  
ESTATE AGENTS

023 8028 4411  
[www.fellsgulliver.com](http://www.fellsgulliver.com)