



This one bedroom end of terrace property is offered to the market with no onward chain inviting the possibility of a quick sale and making a great purchase for first time buyers.

The property is presented in good condition and comprises of one double bedroom, a spacious 15ft reception room, a three piece bathroom and the kitchen with ample storage, a gas cooker and appliances.

The property also provides one allocated parking space as well as visitor parking.



-  NO ONWARD CHAIN
-  ONE BEDROOM END OF TERRACE HOUSE
-  15FT SITTING ROOM
-  IDEAL FIRST HOME OR INVESTMENT BUY
-  FREEHOLD PROPERTY
-  WALKING DISTANCE TO LANGLEY STATION AND NEARBY SCHOOLS
-  ALLOCATED AND VISITOR PARKING

					
x1	x1	x1	x1	Y	N
Bedrooms	Reception Rooms	Bathrooms	Parking Spaces	Garden	Garage



Rockall Court
Approximate Floor Area = 50.9 Square meters / 547 Square feet

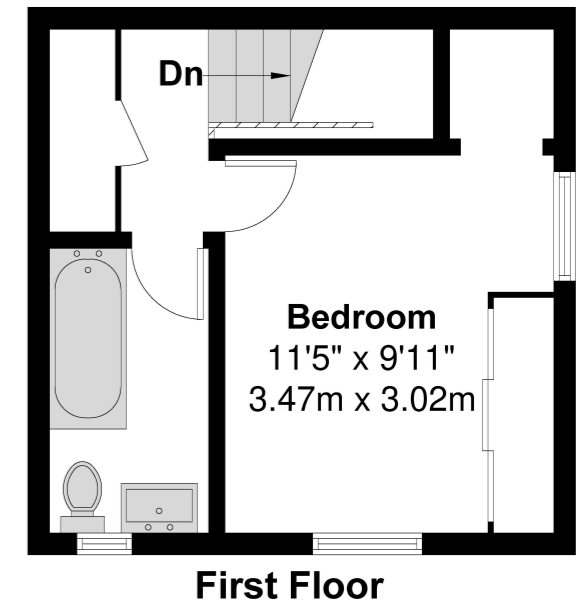
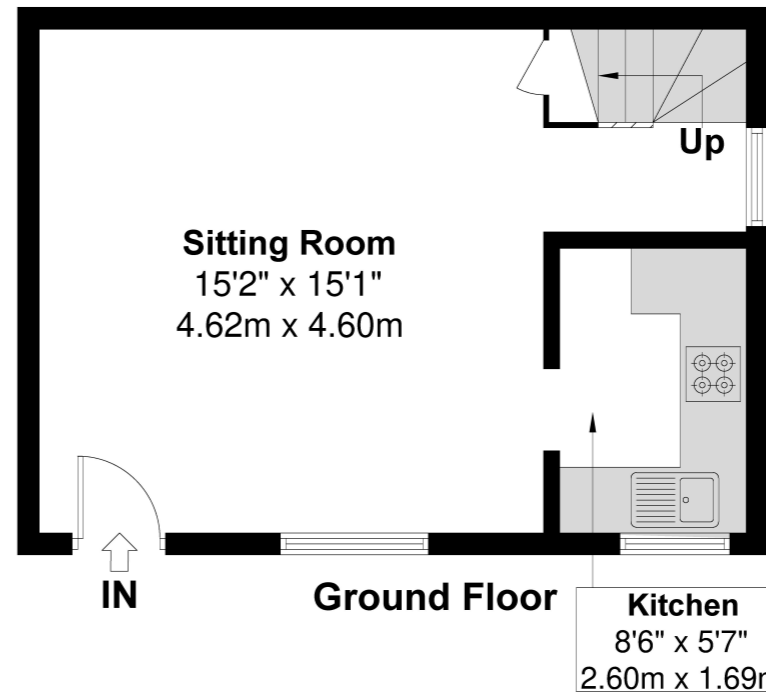


Illustration for identification purposes only, measurements are approximate, not to scale.

Prospective purchasers should be aware that these sales particulars are intended as a general guide only and room sizes should not be relied upon for carpets or furnishing. We have not carried out any form of survey nor have we tested any appliance or services, mechanical or electrical. All maps are supplied by Goview.co.uk from Ordnance Survey mapping. Care has been taken in the preparation of these sales particulars, which are thought to be materially correct, although their accuracy is not guaranteed and they do not form part of any contract.

Transport Links

NEAREST STATIONS:

- Langley- 690 yards
- Iver- 1.2 miles
- Datchet- 2.5 miles
- Slough- 2.5 miles
- Sunnymeads- 2.6 miles

0.9 miles

SECONDARY SCHOOLS:

- Langley Hall Arts Academy
0.7 miles
- The Langley Academy
0.8 miles
- Langley Grammar School
0.9 miles
- St Bernard's Catholic Grammar School
1.7 miles
- Ditton Park Academy
1.7 miles
- Upton Court Grammar School
1.9 miles
- Council Tax**
Band B

Local Schools

PRIMARY SCHOOLS:

- The Langley Heritage Primary
140 yards
- Langley Hall Primary Academy
780 yards
- Marish Primary School
0.5 miles
- Foxborough Primary School
0.7 miles
- The Langley Academy Primary

