



Priesthouse Lane,
Formby, L37 8BB

Offers Over £375,000

SM

STEPHANIE MACNAB
ESTATE AGENT

This home is immaculate and minimal, with a calm vibe and clean lines, which certainly helps when moving! The location is also desirable, just a SHORT WALK into the VILLAGE and all the local amenities.

From the moment you cross the threshold, you will not be disappointed! The welcoming entrance hall gives way to the bright and airy lounge, the perfect place to relax after a busy day. The rear sitting room has BI-FOLDING doors that overlook the rear garden. The kitchen is modern and neutral with integrated appliances.

Upstairs adopts the same neutral theme. There are FOUR DOUBLE BEDROOMS and a family bathroom which has been recently fitted.

Outside, there is OFF-ROAD parking for two cars and an integral GARAGE. The current owners take great pride and enjoyment from maintaining the abundant rear garden.

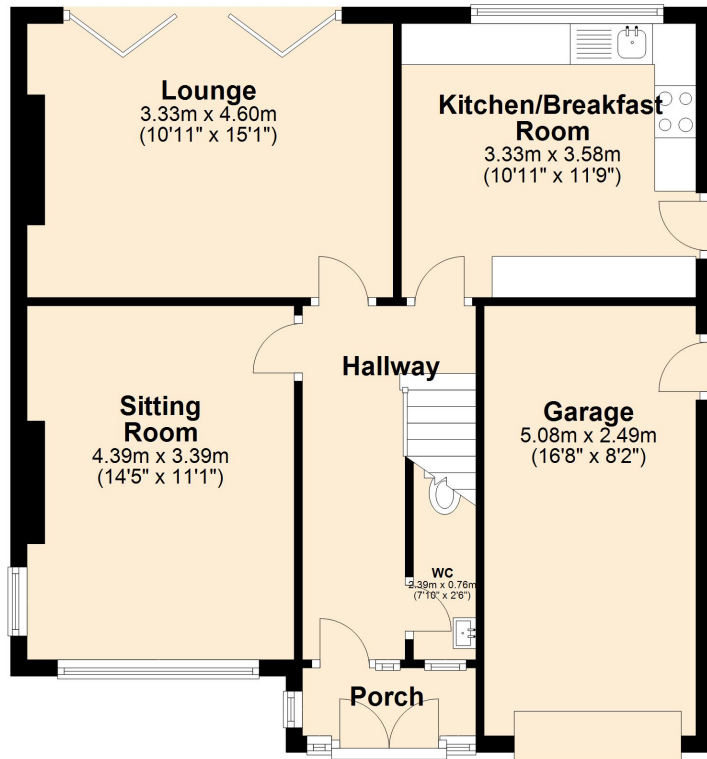
Call us to view, I don't see this one hanging around for long! 01704 516 626 - follow us on Facebook and Instagram.





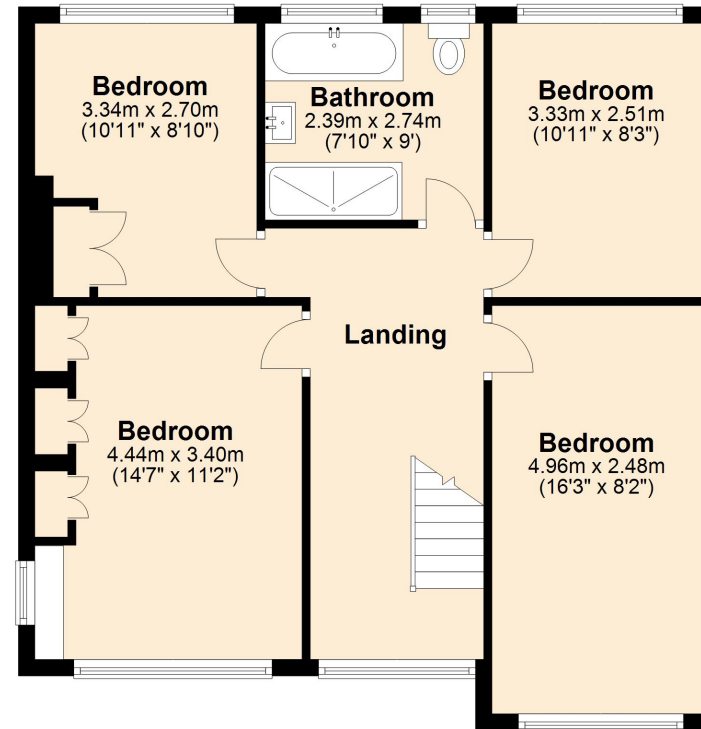
Ground Floor

Approx. 68.1 sq. metres (733.2 sq. feet)



First Floor

Approx. 66.0 sq. metres (710.1 sq. feet)



Total area: approx. 134.1 sq. metres (1443.3 sq. feet)

Plan produced using PlanUp.

