

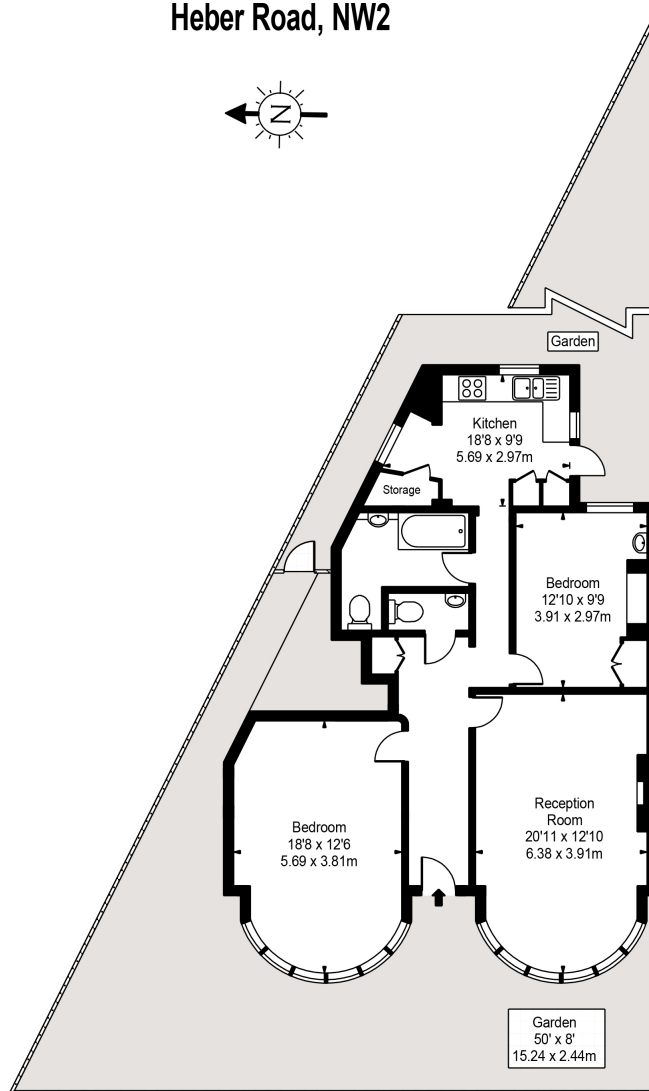
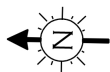


Heber Road, London, NW2 6AA

£625,000

- Two Double Bedrooms
- Ground Floor
- New Lease
- Excellent Location
- One Bathroom
- Period Conversion
- Great Investment
- Private Garden

Heber Road, NW2



Ground Floor

Approx Gross Internal Area **952 Sq Ft - 88.44 Sq M**

For Illustration Purposes Only - Not To Scale
www.tomekphotography.co.uk

