



**Flat 4, 13 Vespasian Road, Fairfields,
Milton Keynes, Buckinghamshire, MK11
4AG**

£225,000 Leasehold

- Modern interior
- Off road parking for one vehicle
- Seperate Kitchen
- Within walking distance to Stony Stratford
- Balcony off Master Bedroom
- New Development
- Two double bedrooms
- EPC Rating





Lounge/ Diner

4.42m x 4.49m (14' 6" x 14' 9")

Kitchen

2.11m x 3.05m (6' 11" x 10' 0")

Bedroom One

3.43m x 3.93m (11' 3" x 12' 11")

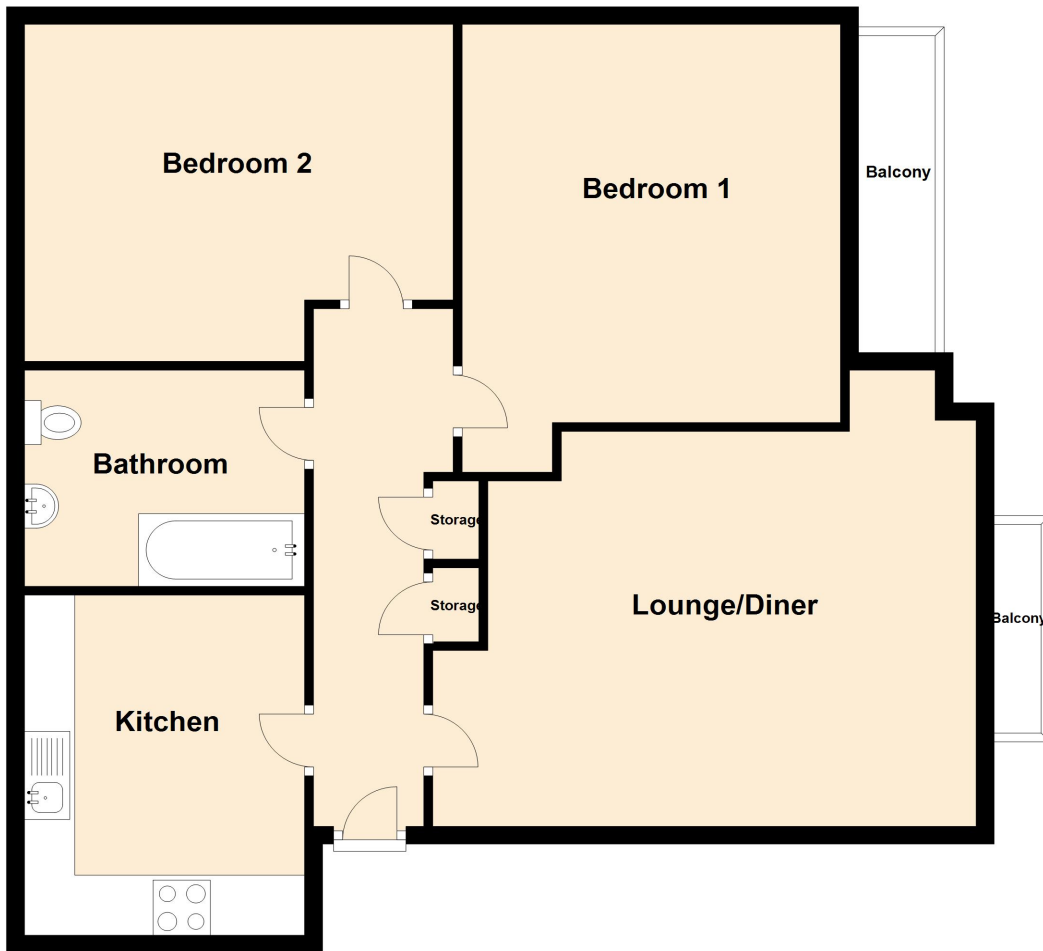
Bedroom Two

3.2m x 3.27m (10' 6" x 10' 9")

Disclaimer

Whilst we have endeavoured to prepare our sales particulars accurately none of the services, appliances or equipment have been tested. A buyer should satisfy themselves on such matters prior to purchase. Any measurements or distances mentioned in these particulars are for guide reference only. If such particulars are fundamental to a purchase, buyers should rely on their own enquiries. All enquiries should be directed to Elevation Estate Agents in the first instance.

Ground Floor



Floor plans are for layout purposes only. Measurements are approximate and subject to inaccuracies
Plan produced using PlanUp.