



73 Bromsgrove, Faringdon, Oxfordshire SN7 7JG  
Oxfordshire, Offers in Excess of £315,000

Waymark



# Bromsgrove, Faringdon SN7 7JG

Oxfordshire

Freehold

End Of Terrace Character Cottage | Three Bedrooms - Two Large Doubles & A Good Size Single | Three Reception Rooms | Including Open Plan Kitchen/Breakfast Room With Access To Garden | Utility Area & Downstairs W/C | Private Sunny Courtyard Garden | Central And Prominent Town Location | Close To Amenities And Local Schooling

### Description

A fantastic opportunity to purchase this beautiful end of terrace character cottage which is located in a prominent position in the heart of the popular market town of Faringdon. The property is only a short walk to the market place as well as all amenities and local schooling. The property also benefits from three spacious and light bedrooms, three reception rooms and a private and sunny courtyard garden.

The property provides flexible accommodation and comprises; Entrance porch, sitting room with open fireplace, snug/dining room, open plan kitchen/breakfast room with access to garden, utility/downstairs w/c, landing, family bathroom, and three light and airy bedrooms, master with large fitted wardrobes.

Outside, to the front there is communal on-road parking available. To the rear is a private courtyard garden with established planting, space for a bistro table and chairs and a useful timber storage shed. There is also a newly planted lawn.

The property is freehold and is connected to mains gas, electricity, water and drainage. There is mains gas central heating and upvc double glazing throughout. This property must be viewed to be fully appreciated.

### Location

The historic market town of Faringdon, which dates back to the 12th Century, is located almost equidistant of Swindon and Oxford on the A420 which leads to the A34, M40 and M4. Mainline railway services to London run from Swindon, Oxford City, Oxford Parkway and Didcot Parkway. The town is served by the Stagecoach S6 bus which runs a regular ½ hourly service through much of the day to Swindon and Oxford and the villages en-route. The town itself has a thriving community and amenities such as the leisure centre, library, independent traders, doctors' surgery, two primary schools, and a secondary school. In 2004, Faringdon became the first Fairtrade town in the South East of England. A recent retail development includes a Waitrose and an Aldi supermarket, with further retail planned, in addition to the existing Tesco store.

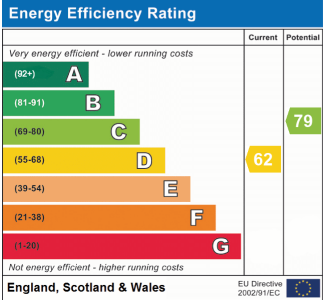
### Viewing Information

By appointment only please.

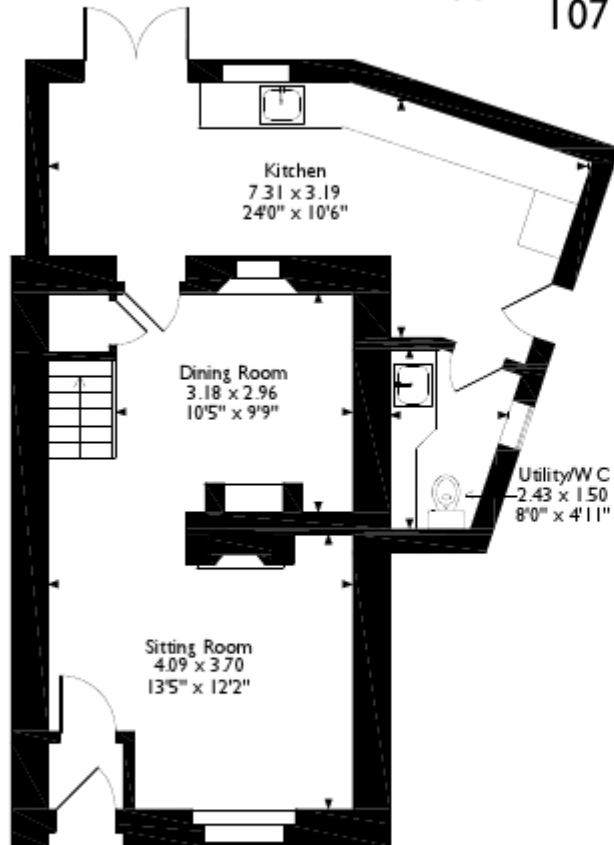
### Local Authority

Vale of White Horse District Council.

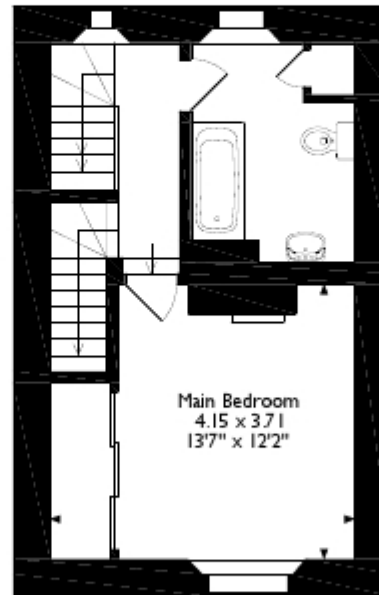
Tax Band: D



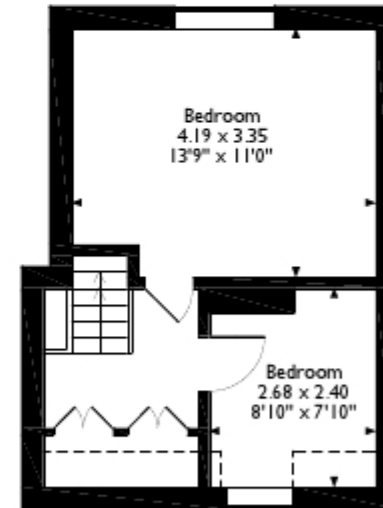
73 Bromsgrove, Faringdon  
Approximate Gross Internal Area  
107 Sq M / 1148 Sq Ft



**Ground Floor**



**First Floor**



**Second Floor**

Please note that the location of doors, windows and other items are approximate and this floorplan is to be used for illustrative purposes only. Unauthorized reproduction is prohibited.



