

Whitney Crescent, Haywood Village, Weston-Super-Mare,
Somerset. BS24 8ES

£190,000 Leasehold

FOR SALE



www.housefox.co.uk

01934 314242
01275 404601
01278 557700
sales@housefox.co.uk

PROPERTY DESCRIPTION

HOUSE FOX ESTATE AGENTS PRESENTS.....A lovely light and bright first floor purpose built apartment on the popular Haywood Village development the property sits in the limited catchment area of Haywood primary, one of only two ofsted outstanding in Weston super Mare

The Apartment faces West, so the rooms are filled with natural sunlight in the late afternoon and evening, which flows into the rooms which comprise, hallway, open plan lounge/diner with double doors opening up, to give you fresh air and a feel of space, 2 bedrooms, family bathroom, en-suite shower room, plus double glazing, gas central heating, and 2 parking spaces

So if you're looking for a light, modern apartment then look no further and call House Fox Estate agents today to book a viewing.

FEATURES

- WALK THROUGH 360 VIDEO TOUR AVAILABLE
- First floor modern apartment
- 2 bedrooms
- Open plan lounge/kitchen with double doors
- 2 bathrooms
- 2 parking spaces
- Double glazing
- Gas central heating
- EPC-B



ROOM DESCRIPTIONS

Communal front door to communal hallway:

Communal hallway:

Security entry phone system, stairs to the first floor

Door to the apartment

Hallway:

Cupboard, radiator

Open plan lounge to kitchen:

5.55m x 3.77m (18' 3" x 12' 4") KITCHEN: Sink unit, floor and wall units, built in oven and hob, plumbing for washing machine .

LOUNGE: Radiator, double doors with Juliet balcony

Bedroom 1:

3.27m x 3.07m (10' 9" x 10' 1") Radiator, double glazed window, door to the en-suite

En-suite:

Shower cubicle, wash hand basin, WC, radiator

Bedroom 2:

3.36m x 2.61m (11' 0" x 8' 7") 3.26m x 2.61m (10' 8" x 8' 7") Radiator, double glazed window

Bathroom:

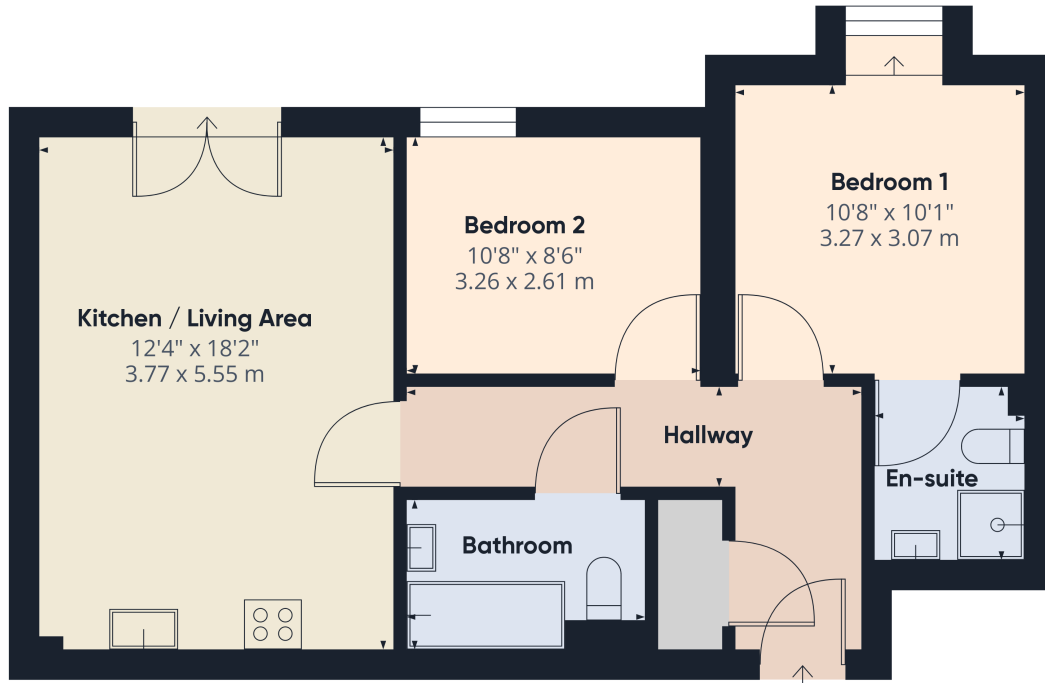
Bath, wash hand basin, WC, radiator

Parking:

There are 2 spaces, which are marked 5/8



FLOORPLAN & EPC



Approximate total area⁽¹⁾
605.79 ft²
56.28 m²

(1) Excluding balconies and terraces

While every attempt has been made to ensure accuracy, all measurements are approximate, not to scale. This floor plan is for illustrative purposes only.
Calculations are based on RICS IPMS 3C standard.

GIRAFFE360

