



Penthouse, Rochester Court Loch Promenade, Douglas, Isle of Man. IM1 2NB

Impressive penthouse apartment with twin balconies and generous flexible accommodation



£624,950 Leasehold

PROPERTY DESCRIPTION

Situated in the heart of Douglas, Apartment 15 at Rochester Court is an impressive penthouse offering luxurious and flexible accommodation. The apartment boasts two double bedrooms, plus a study (potential third bedroom) The master bedroom features an en-suite shower room, providing a touch of elegance and convenience. Walk-in wardrobes add a practical and stylish element to the bedrooms, ensuring ample storage space for residents.

The spacious lounge/diner is a highlight of the penthouse, providing a comfortable and inviting space for relaxation and entertaining. The fantastic views over Douglas Bay can be enjoyed from the twin balconies, offering a perfect spot to unwind and appreciate the scenic beauty of the coastal surroundings. The inclusion of a secure underground parking space adds a practical touch, ensuring convenience for city living. Apartment 15 at Rochester Court combines modern luxury, flexible living spaces, and stunning views, making it an exceptional penthouse residence in the heart of Douglas.

FEATURES

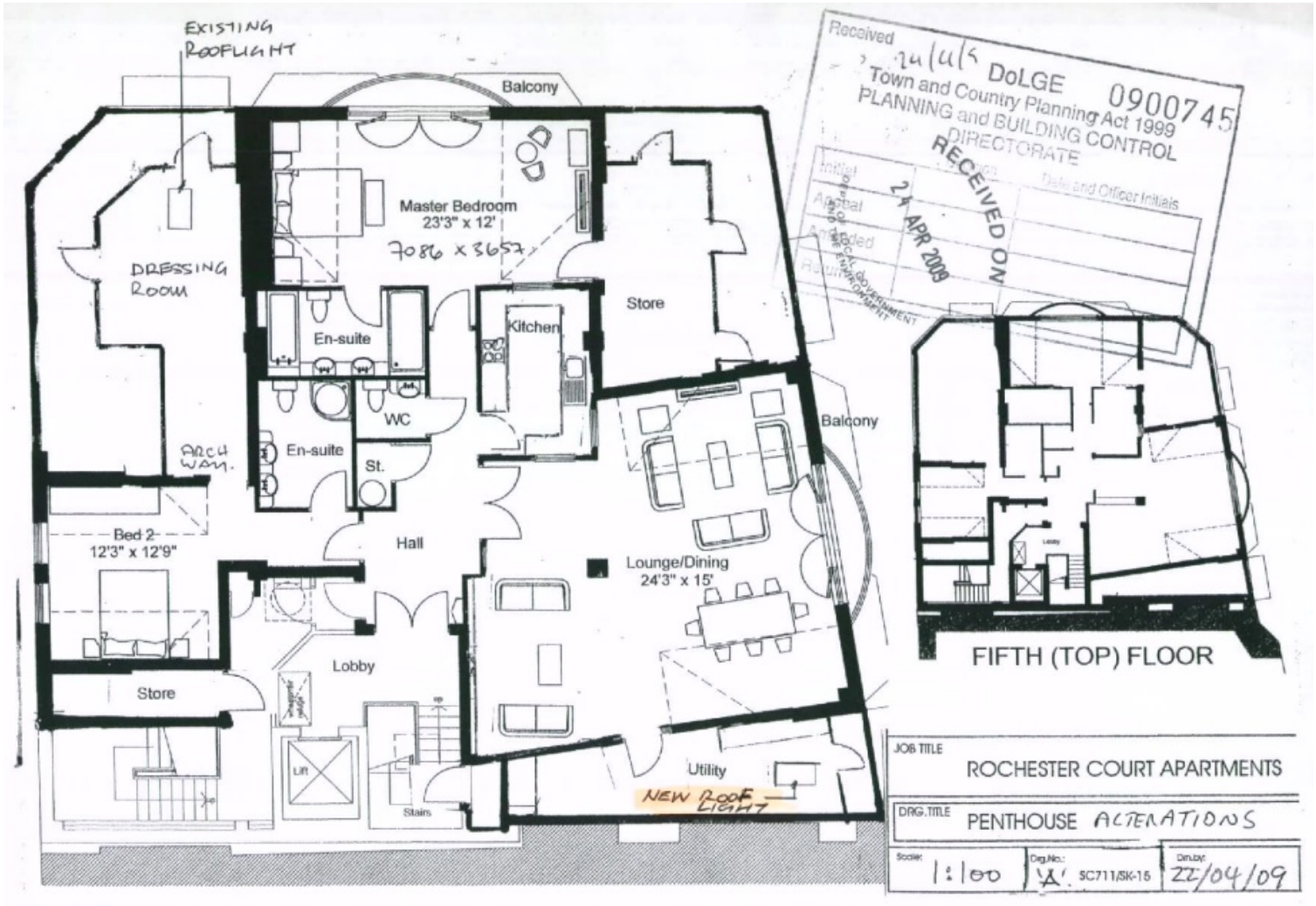
- Impressive Penthouse Apartment
- Occupies the entire top floor
- Exclusive Development of 15 Purpose Built Apartments
- Approximately 1,700 sqft
- Convenient Central Location with Access to Strand Street
- Open Plan Lounge/Diner with Stunning Views
- Kitchen plus Large Utility Room
- Master Bedroom with En Suite and Dressing Rooms
- Additional Double Bedroom with En Suite and Study/Dressing Room (or possible third bedroom)
- Guest W.C.
- Secure Underground Parking Space
- On Site Gymnasium
- No Onward Chain



Property Images



FLOORPLAN



DISCLAIMER: Whilst Manxmove Ltd believe that these details are correct, neither Manxmove Ltd or their clients guarantee their accuracy in any way. Consequently, these details are not to be used to form part of any legally binding contract. Prospective purchasers or tenants are advised to visit this property to satisfy themselves as to the correctness of these details. Please note, we use wide angle camera lenses in order to show as much of each room as possible. This is not intended to mislead any prospective purchasers or tenants in any way and an honest verbal description is always available prior to viewing if required.