



6 Matthau Lane, Oxley Park, Milton Keynes, Buckinghamshire, MK4 4SY

£435,000 Freehold

- Four bedroom
- Semi detached house
- Desirable location of Oxley Park
- Single garage
- Off road parking for two vehicles
- Hazely school catchment
- En suite and dressing area to master
- Townhouse
- Chain free
- EPC Rating





This is a simply stunning extended four bedroom semi-detached townhouse located within the highly desirable Oxley Park development. This executive home offers versatile family accommodation with entrance hall, lounge/diner with doors leading to the rear garden, spacious kitchen/breakfast room, cloakroom, en suite and dressing area to master bedroom, three further bedrooms and family bathroom. To the exterior the property features a single garage, well maintained rear garden with patio area and off road parking for two vehicles. Please call to arrange an early viewing as the enquiry level is already high.

GROUND FLOOR

Entrance Hall

Doors leading to:

Downstairs Cloakroom

Fitted to comprise two piece suite

Kitchen Breakfast Room

3.95m x 2.53m (13' 0" x 8' 4")

Lounge Diner

4.57m x 5.02m (15' 0" x 16' 6")

FIRST FLOOR

Landing

Doors leading to:

Bedroom Two

4.49m x 2.55m (14' 9" x 8' 4")

Bedroom Three

3.63m x 2.55m (11' 11" x 8' 4")

Bedroom Four

2.63m x 1.92m (8' 8" x 6' 4")

Family Bathroom

Fitted to comprise three piece suite

SECOND FLOOR

Landing

Doors leading to:

Bedroom One

4.81m x 3.52m (15' 9" x 11' 7")

Dressing Room

2.79m x 1.22m (9' 2" x 4' 0")

En Suite To Master

Fitted to comprise three piece suite

EXTERIOR

Rear Garden

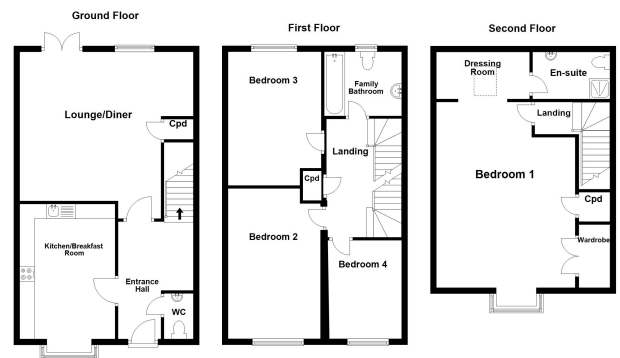
Single Garage

Off Road Parking

Space for two vehicles

Disclaimer

Whilst we have endeavoured to prepare our sales particulars accurately none of the services, appliances or equipment have been tested. A buyer should satisfy themselves on such matters prior to purchase. Any measurements or distances mentioned in these particulars are for guide reference only. If such particulars are fundamental to a purchase, buyers should rely on their own enquiries. All enquiries should be directed to Elevation Estate Agents in the first instance.



Elevation estate agents
Plan produced using Floorplan