

The Metropole Flat 306 The Leas

Folkestone
CT20 2LU

£350,000 LEASEHOLD

FOR SALE WITH BURNAP + ABEL... Welcome to luxury living in The Metropole, Folkestone. This stunning 2 bed apartment offers a perfect combination of modern comfort and historic charm. Step inside and be greeted by a spacious lounge, ideal for entertaining guests or relaxing after a long day. The kitchen/diner is perfect for preparing gourmet meals while enjoying the company of loved ones. The master bedroom boasts an en-suite shower room, providing ultimate privacy and convenience. A stylish family bathroom ensures every member of the household has their own space to unwind. Residents parking ensures you'll never have to worry about finding a spot when you come home. Enjoy the convenience of a lift, making moving in and out a breeze. And let's not forget the breathtaking surroundings - situated in a stunning grade II listed building with rich history and architectural beauty. Don't miss your chance to make this exquisite apartment your new home. Contact us today to schedule a viewing!



Entrance Hall

Lounge

17' 2" x 15' 9" (5.23m x 4.80m)

Kitchen/Diner

17' 3" x 9' 2" (5.26m x 2.79m)

Bedroom One

15' 11" x 13' 9" (4.85m x 4.19m)

En-Suite

Bedroom Two

12' 5" x 9' 9" (3.78m x 2.97m)

Bathroom

7' 8" x 7' 0" (2.34m x 2.13m)

Residents Car Park

Used on a first come first served basis.

Store Room*

Available to purchase at additional costs. Can be viewed at the same time as a viewing is arranged.

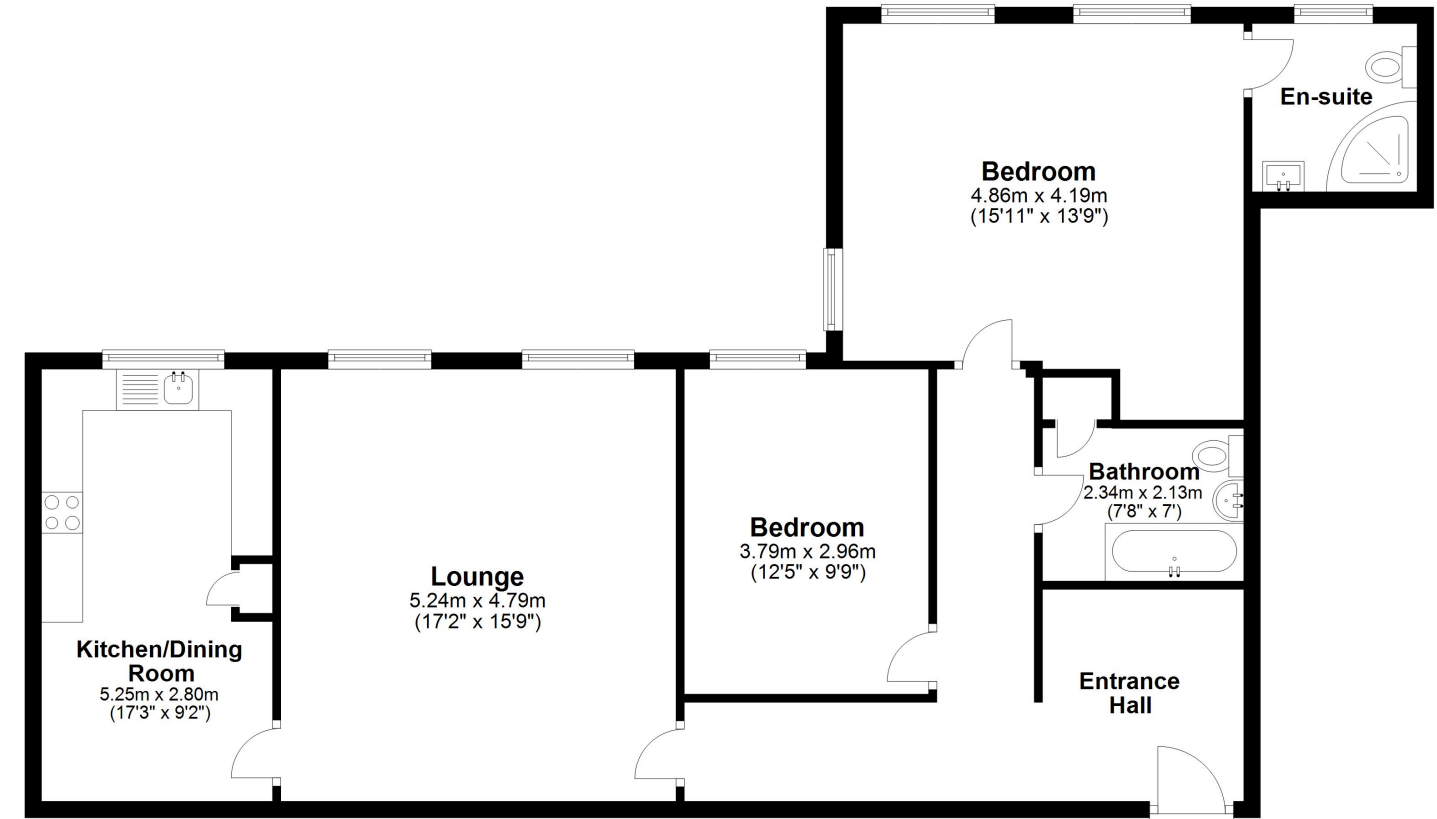
Lease + Service Charge Info

We understand the property has a share of freehold.

The lease is from 25 March 1984 to 31 March 3006. Leaving 982 years remaining.

Service charge is paid 6 monthly at £1786.78.

Third Floor
Approx. 100.3 sq. metres (1079.7 sq. feet)



Whilst every attempt has been made to ensure the accuracy of the floor plan contained here, measurements of doors, windows, rooms and any other items are approximate and no responsibility is taken for any error, omission or mis-statement. This plan is for illustrative purposes only and should be used as such by any prospective purchaser.
Plan produced using PlanUp.

