

40 Warnford Road, Orpington, Kent, BR6 6LW

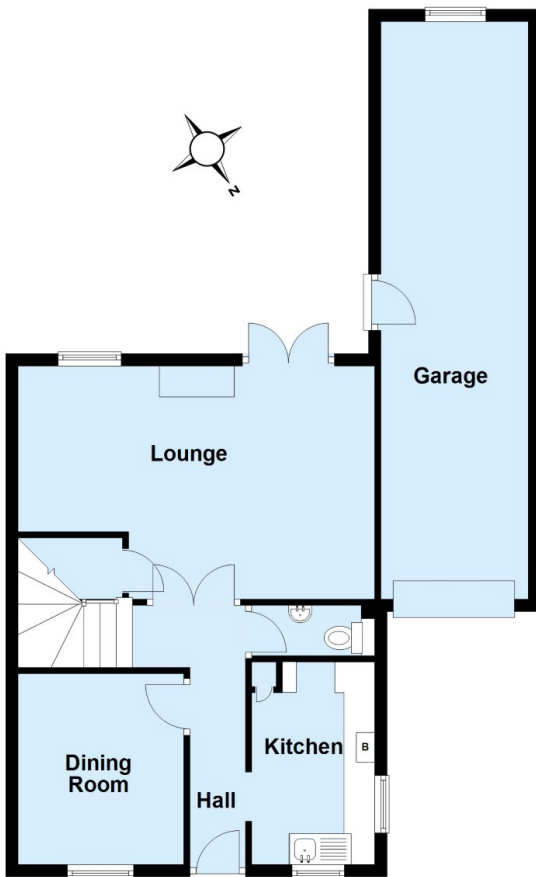
Property Images





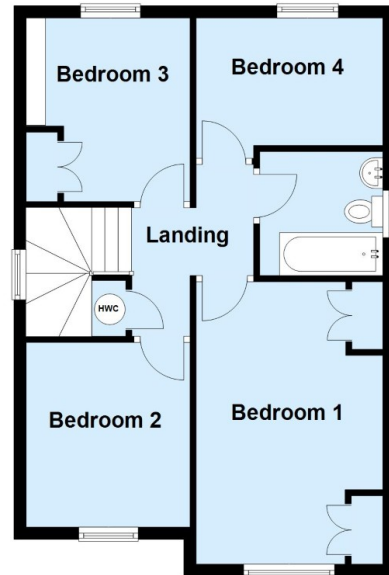
Ground Floor

Approx. 69.9 sq. metres (752.3 sq. feet)



First Floor

Approx. 49.8 sq. metres (536.4 sq. feet)



Total area: approx. 119.7 sq. metres (1288.7 sq. feet)

This plan is for general layout guidance and may not be to scale.
Plan produced using PlanUp.