



## Elmside Walk

Archers Court | Elmside Walk | Hitchin | Herts | SG5 1HB

[www.stonegate-estates.co.uk](http://www.stonegate-estates.co.uk)





# ELMSIDE WALK

---

## Property Description

We are delighted to bring to the market this well presented and much improved two bedroom first floor retirement apartment.

This assisted living development is very well placed within Hitchin town centre and offers easy access to local shops and restaurants as well as the local park and swimming pool.

The apartment has a southerly aspect and is presented in good condition throughout. The kitchen has fitted appliances and there is a well appointed wet room. The development has staff on site 24 hours a day as well as a communal lounge and gardens.

There is a restaurant in the adjoining Elmside development and on site parking.

The lease has until 2133 and service charge costs are available on request.

Hitchin town provides a broad range of shops and a regular traditional market, together with a good selection of restaurants, bars and pubs within its historic centre. The town also provides a swimming centre, theatres and a library, whilst the commuter is served by the main line railway station (Kings Cross - 30 minutes) and direct links to the A1(M).

**£320,000 Leasehold**

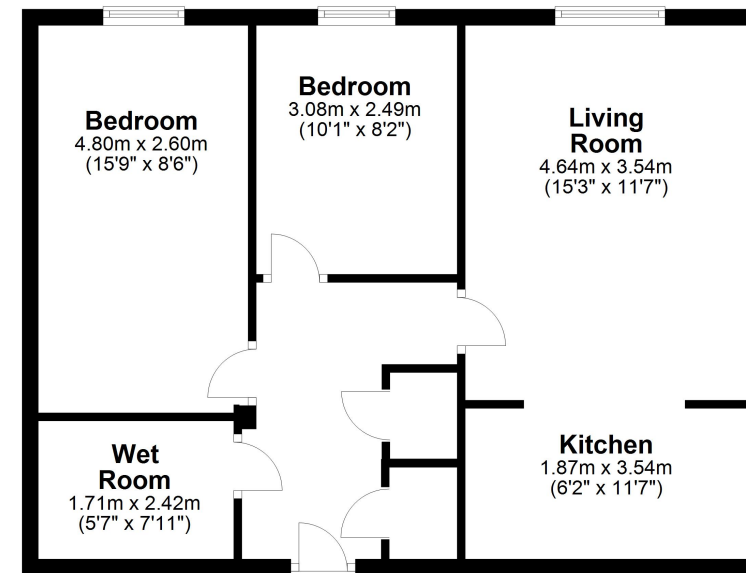






### Floor Plan

Approx. 58.4 sq. metres (628.4 sq. feet)



Total area: approx. 58.4 sq. metres (628.4 sq. feet)

All measurements shown are approximate and for guidance only. Garages and workshops are not included in any gross floor areas unless integral to the main building where they will be included. Plan produced using PlanUp.





- Two Bedroom Retirement Apartment
- Assisted Living
- Town Centre Location
- Communal Gardens
- 24 Hour Assistance
- No Onward Chain
- Residents Lounge

EPC Rating:

Stonegate Estate Agents

01462 438979

[sales@stonegate-estates.co.uk](mailto:sales@stonegate-estates.co.uk) | [www.stonegate-estates.co.uk](http://www.stonegate-estates.co.uk)

