



Cobham Close
Between the Commons
SW11

TO LET

NO SHARERS. A stylish modern town house, just refurbished to a smart contemporary finish, offering open-plan living and a modern landscaped garden. Located in a highly convenient location Between the Commons just off fashionable Northcote Road and Wandsworth Common and close to excellent schools including Honeywell, Belleville and Bolingbroke.

Casenove Villas, Cobham Close, SW11

Approx. Gross Internal Area*
1159 Sq Ft - 107.63 Sq M

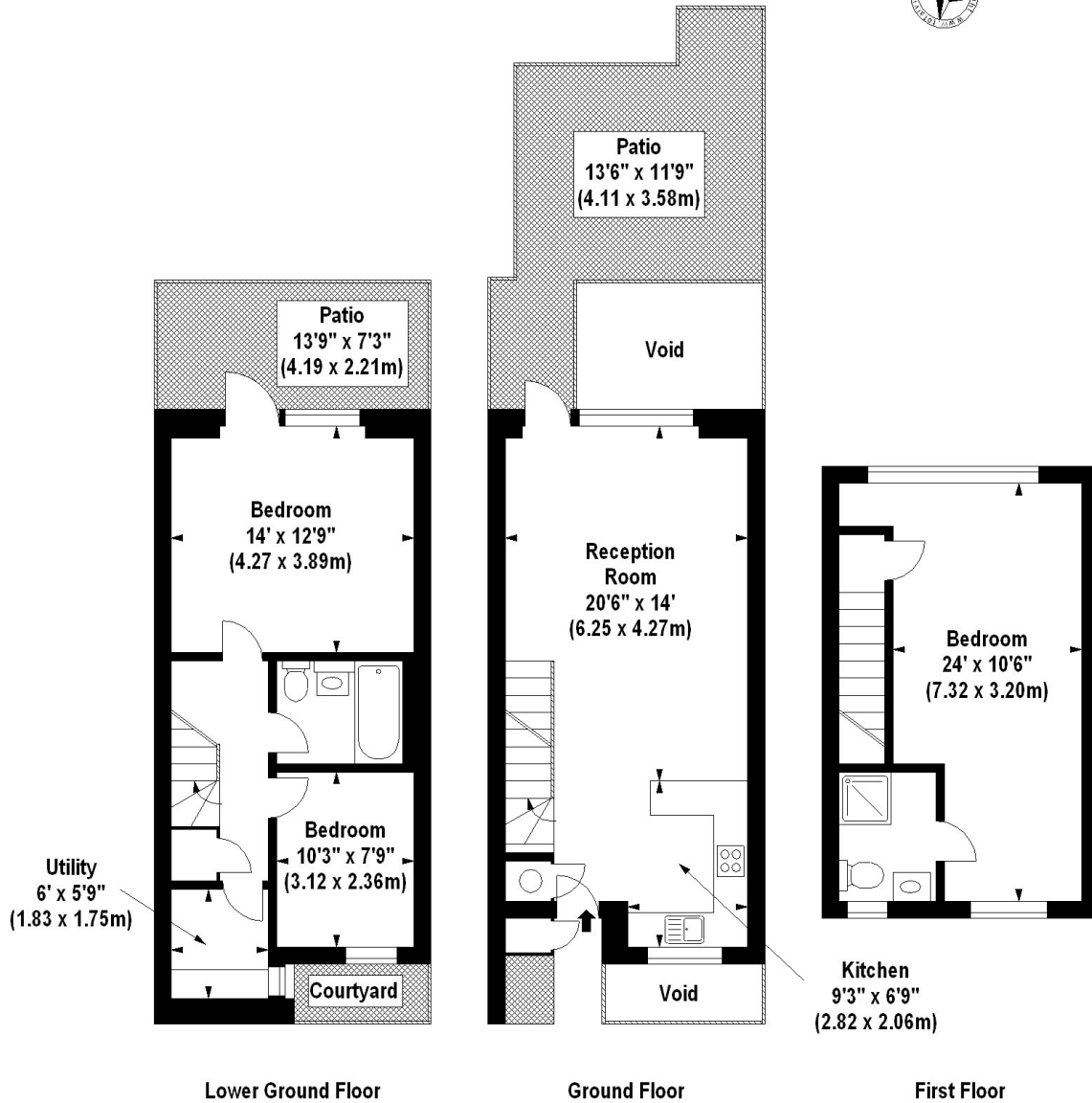
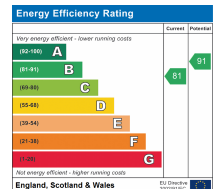
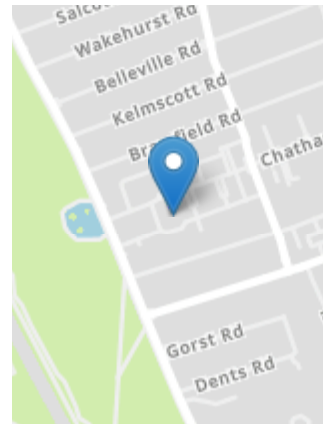


Illustration For Identification Purposes Only. Not To Scale
*Floorplan Drawn According To RICS Guidelines
© www.totalvista.co.uk 2011 (aa)



PROPERTY FEATURES

- Utility Room
- Garden & Deck
- Residents Parking
- Bedroom 3 / Study
- 24' Principal Bedroom
- Near to Honeywell School
- Bathroom/WC
- Reception Room / Kitchen
- En suite Shower Room/WC
- 1159 Sq Ft / 107.6 Sq M



VIEWING BY APPOINTMENT ONLY

The particulars do not constitute part of an offer or contract: the particulars including text descriptions, photographs and plans are only for the guidance of prospective purchasers and must not be relied on as statements of fact: nothing in the particulars shall be deemed as a statement that the property is in good condition nor that any services or facilities are in good working order: measurements given are approximate: prior to viewing we recommend that you discuss particular points of interest with a staff member to avoid a wasted journey