



9 Whittle Court,  
Knowlhill, Milton Keynes, MK5 8FT

Tel: 01908 231 551



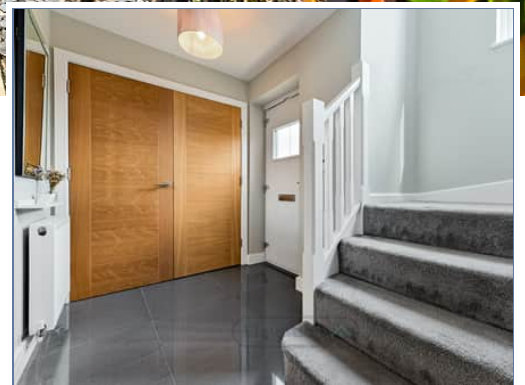
mail@elevationstateagents.com



**4 Foundry Close, Deanshanger, Milton  
Keynes, Northamptonshire, MK19 6FT**

**£360,000 Freehold**

- Three Double Bedroom
- Two bathroom
- Large open plan kitchen/living
- High spec throughout
- Within walking distance to local amenities
- EPC Rating



See our full selection of properties online at [www.elevationstateagents.com](http://www.elevationstateagents.com)



## A stunning 3 bedroom family home

When entering the property you are instantly greeted by a spacious and bright hallway. As you make your way through the hall way, you are led into the large open planned kitchen-diner living area which boasts a beautifully designed kitchen which additionally comes complete with Neff and Bosch appliances. This ingenious design has allowed space to be maximized as well as allowing natural light to come seeping through the back doors.

As you head upstairs to the first floor, you have the master bedroom which comes complete with a gorgeous en-suite. The master bedroom is a very spacious size and allow plenty of room for you to apply your own personal touch. The second bedroom which is also on the first floor is of very similar size to the master bedroom allows plenty of space for comfortable living.

Up to the second floor, bedroom three comprises a great space with a large storage cupboard. Again, this very spacious room is perfect for living and of course you can tailor the room to your own personal needs and wants.

Deanshanger is located just a few miles from Central Milton Keynes. It offers an easy commute into the city and its vast range of employment yet offers a quiet village feel more suitable for those not looking for city living. The village offers a range of amenities within walking distance of the site including pub, shops, local schooling, take-away's, chemist etc. Everything you need within an easy reach.

## Disclaimer

Whilst we have endeavoured to prepare our sales particulars accurately none of the services, appliances or equipment have been tested. A buyer should satisfy themselves on such matters prior to purchase. Any measurements or distances mentioned in these particulars are for guide reference only. If such particulars are fundamental to a purchase, buyers should rely on their own enquiries. All enquiries should be directed to Elevation Estate Agents in the first instance.

