

16 Sidcup Hill Gardens, Sidcup, Kent, DA14 6JP
£325,000 Leasehold



Guide Price £325,000 - £350,000

Situated in a secluded residential close you will find this spacious three bedroom first floor maisonette. Recently decorated throughout, with modern kitchen and bathroom. The living room is a great size for the family to relax and have formal dining area. Externally, there is a garden to the rear and to the front communal grounds for the residents to enjoy. Other benefits include a Garage En-bloc and residents parking.

The property is sold with no chain so a quick transaction is possible. Use our online diary to request your viewing.

Guide Price £325,000 - £350,000

Situated in a secluded residential close you will find this spacious three bedroom first floor maisonette. Recently decorated throughout, with modern kitchen and bathroom. The living room is a great size for the family to relax and have formal dining area. Externally, there is a garden to the rear and to the front communal grounds for the residents to enjoy. Other benefits include a Garage En-bloc and residents parking.

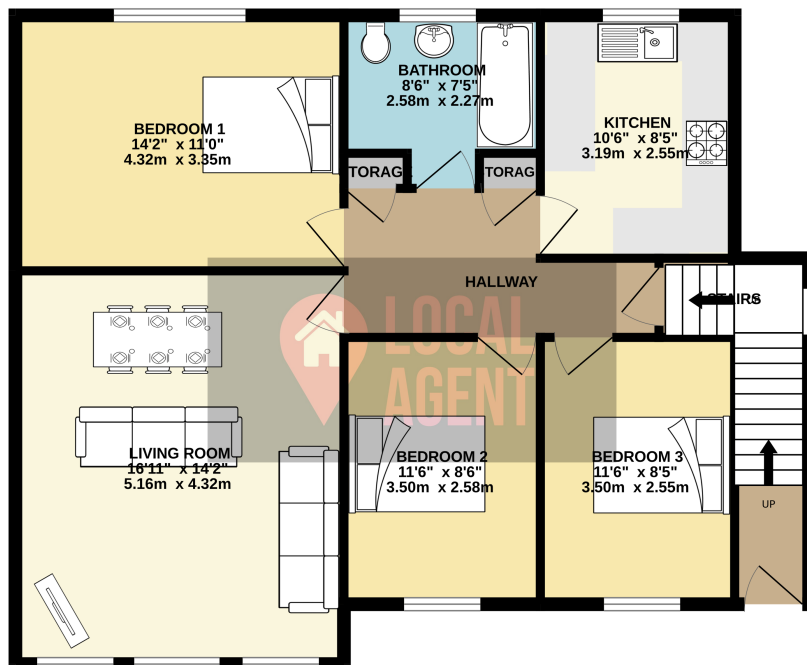
The property is sold with no chain so a quick transaction is possible. Use our online diary to request your viewing.

Situated in a sought after location set back off the main road you will find this this fantastic three bedroom maisonette. Its location is ideally positioned for access to some of the best schools in the borough with

Chislehurst & Sidcup is home to the famous Dansie and footscray parks and restaurants, retail and leisure. The Meadows just a short walk. The property also benefits from a large garden and a garage.

at Sidcup Golf Club, 0.7 miles away are many lots Cray flowing through. The bus. The location is a commuter.

GROUND FLOOR
870 sq.ft. (80.9 sq.m.) approx.



TOTAL FLOOR AREA: 870 sq.ft. (80.9 sq.m.) approx

Whilst every attempt has been made to ensure the accuracy of the floorplan contained here, measurements