



**Offers Over £124,000**  
**33 Foulford Place, Cowdenbeath, Fife, KY4 9AN**

# 33 Foulford Place, Cowdenbeath, Fife, KY4 9AN

Delmor are delighted to be marketing this stunning end terraced villa set in a much sought after location. Cowdenbeath has a great range of amenities including shopping, schooling and leisure facilities. There is a train station and close links to the A92 for the commuter. The property briefly comprises of on the ground floor - Entrance hallway with stairs leading to the first floor. Bright lounge. Luxury modern kitchen is fitted with contemporary floor and wall mounted units incorporating gas hob with overhead extractor fan. Wall mounted electric oven and microwave. Integrated dishwasher, fridge/freezer and washing machine. Ample space for dining table and chairs. First floor with top hallway has two double bedrooms one of which has fitted mirrored wardrobes. Luxury shower room comprising of shower cubicle with body jets. Vanity unit housing the wash hand basin. WC. The front garden is enclosed and the rear garden is also enclosed with slabbed patio and chipped area. The property also benefits from gas central heating and double glazing. Early viewing is highly recommended on this property which is in move in condition and is a credit to the current owner.

## Ground Floor

### Entrance



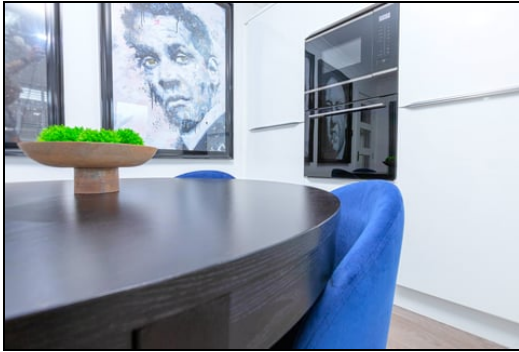
### Lounge



4.72m x 3.18m (15' 6" x 10' 5")



## Kitchen

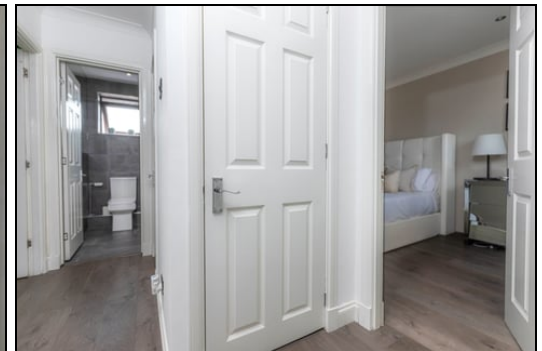
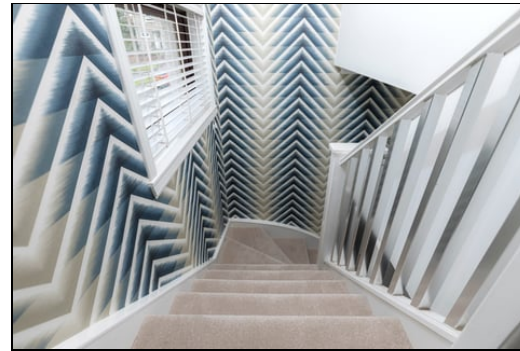


4.01m x 3.73m (13' 2" x 12' 3")

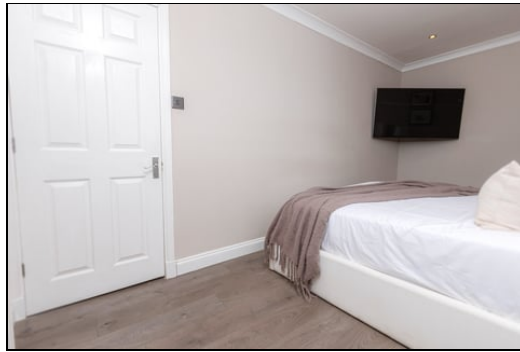
## First Floor



## Top Hall

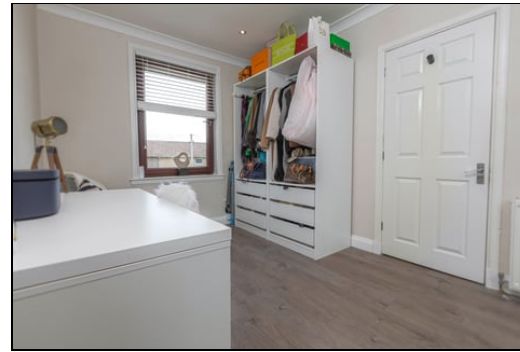


## Bedroom 1



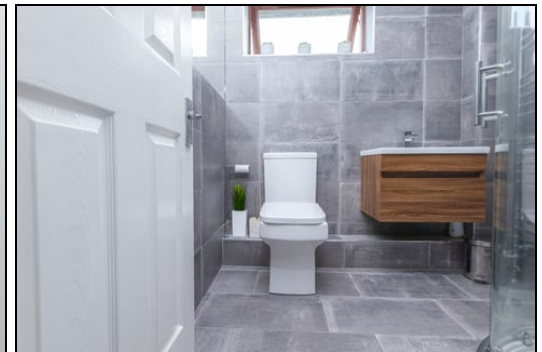
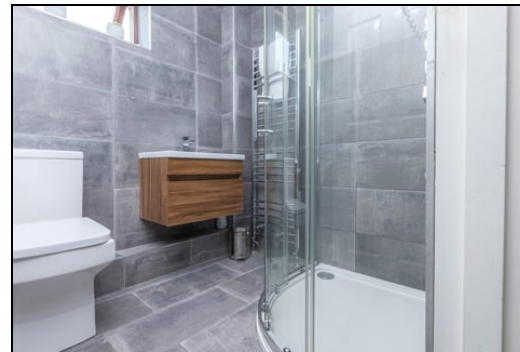
4.14m x 2.57m (13' 7" x 8' 5")

## Bedroom 2

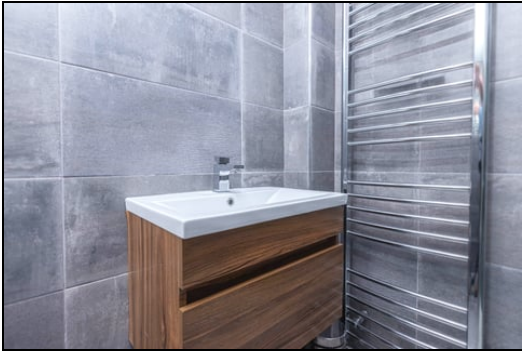


4.72m x 2.57m (15' 6" x 8' 5")

## Shower Room



1.91m x 1.91m (6' 3" x 6' 3")



## Gardens



## Extras

Floor coverings, blinds, hob, oven, microwave, fridge freezer.

## SONIC TAPE

All measurements have been taken using a sonic tape measure and therefore, may be subject to a small margin of error.





## MEASUREMENTS

All measurements are approximate.

## APPLIANCES/SERVICES

The mention of any appliances and/or services within these Sales Particulars does not imply they are in fully working order.

## MORTGAGE & FINANCIAL ADVICE

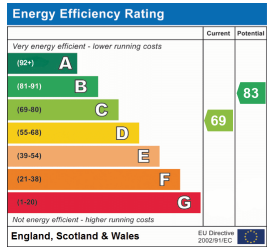
Qualified Mortgage and Financial Consultants can provide you with up to the minute

information on many of the rates available. To arrange an appointment telephone this office. YOUR HOME IS AT RISK IF YOU DO NOT KEEP UP REPAYMENTS ON A MORTGAGE OR OTHER LOANS SECURED ON IT. Full written quotation available on request. A suitable life policy may be required. Loans are subject to status. Minimum age 18.

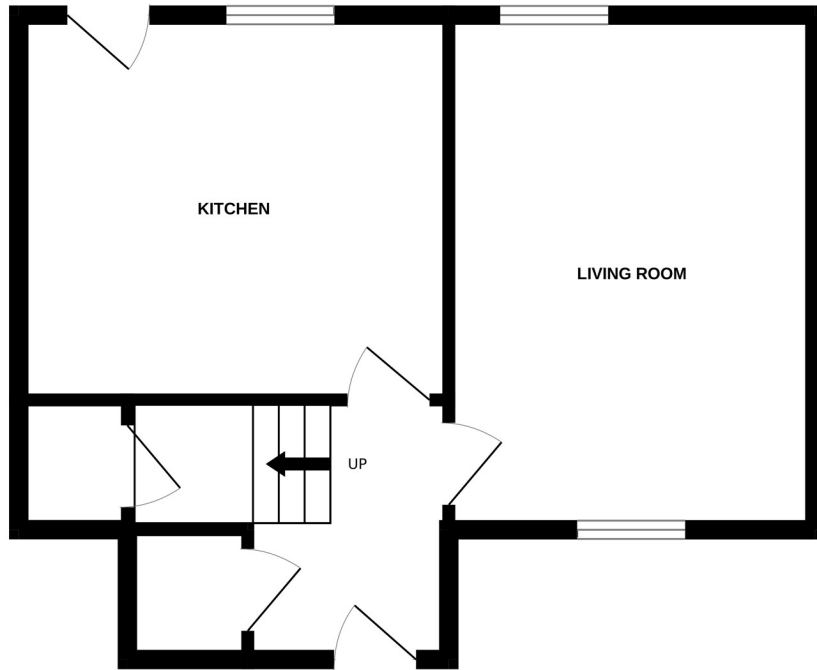
## FREE VALUATION

How much is your property worth?. We can provide you with the answer. We offer a free

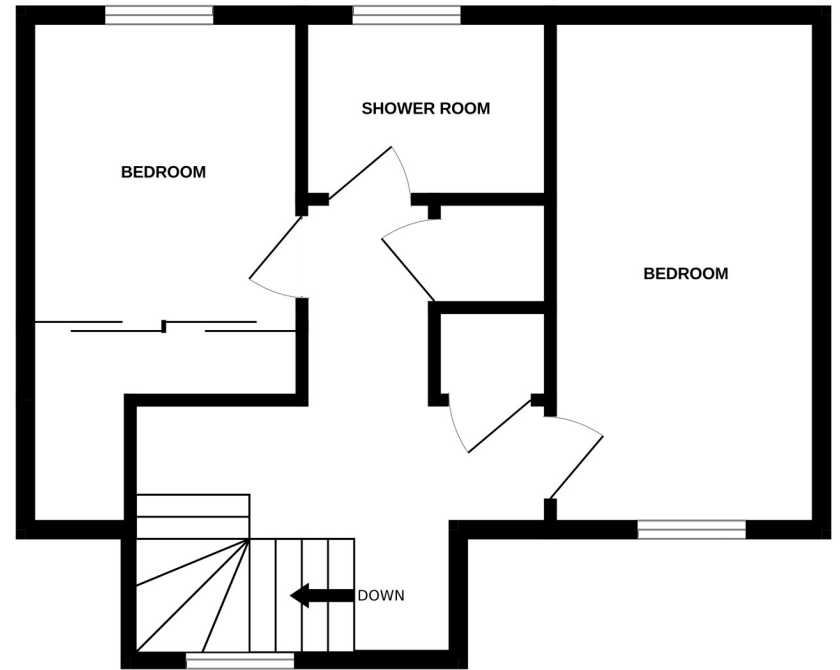
valuation service without cost or obligation. Please call this office for an appointment.



GROUND FLOOR



1ST FLOOR



Whilst every attempt has been made to ensure the accuracy of the floorplan contained here, measurements of doors, windows, rooms and any other items are approximate and no responsibility is taken for any error, omission or mis-statement. This plan is for illustrative purposes only and should be used as such by any prospective purchaser. The services, systems and appliances shown have not been tested and no guarantee as to their operability or efficiency can be given.  
Made with Metropix ©2024